



THE UNIVERSITY OF
**WESTERN
AUSTRALIA**

Health and Medical Sciences Admissions Guide

Medicine, Dentistry, Optometry, Pharmacy and Podiatric Medicine



INFORMATION FOR DOMESTIC STUDENTS

Seek Wisdom

Our health courses

The University of Western Australia (UWA) offers Medicine, Dentistry, Optometry, Pharmacy and Podiatric Medicine courses at postgraduate level. You'll require a bachelor's degree before commencing in a UWA postgraduate qualification. On completion, you'll have both an undergraduate and postgraduate degree, enabling you to stand out in the job market with a wide-ranging skillset as well as a professional qualification.

There are multiple entry pathways for postgraduate study in Medicine, Dentistry, Optometry, Pharmacy and Podiatric Medicine:

- Assured Pathway (for school leavers)
- Combined bachelor's and master's
- Graduate entry (for graduates with a university degree)

This guide gives a short overview of the domestic admission requirements and timelines for each pathway. For detailed information, visit the relevant course page.



DOCTOR OF DENTAL MEDICINE (DMD)

uwa.edu.au/study/d/dental-medicine



DOCTOR OF PODIATRIC MEDICINE (DPM)

uwa.edu.au/study/d/podiatric-medicine

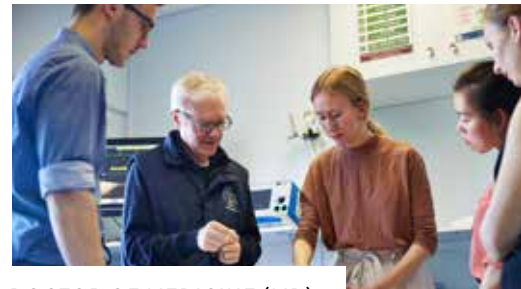
The information in this publication is current as at March 2024 and is subject to change.

* Subject to final approval. You can find updated information on our website at uwa.edu.au/study/health



DOCTOR OF OPTOMETRY (OD)

uwa.edu.au/study/d/optometry



DOCTOR OF MEDICINE (MD)

uwa.edu.au/study/d/medicine



COMBINED BACHELOR OF HUMAN SCIENCES AND MASTER OF PHARMACY*



MASTER OF PHARMACY (MPHARM)

uwa.edu.au/study/m/pharmacy

Assured Pathways

UWA's Assured Pathways enable you to apply for your bachelor's degree and postgraduate professional degree at the same time. You'll graduate with two UWA degrees, ensuring a well-rounded education and the specialist skills needed in your career.

Your place is guaranteed on the basis of your high school performance or equivalent (subject to satisfactory performance in the first two years of your bachelor's degree).

You can apply for an Assured Pathway into the Doctor of Medicine (MD), Doctor of Dental Medicine (DMD) or Doctor of Podiatric Medicine (DPM) at the start of your undergraduate studies. If you are offered a place, you'll study the Bachelor of Biomedicine (Specialised) and the respective majors:

- Medicine: Integrated Medical Science and Clinical Practice (MJD-IMSCP)
- Dentistry: Integrated Dental Sciences (MJD-DENTS)
- Podiatric Medicine: Podiatric Health and Medical Sciences (MJD-PHMSC)

Here's a breakdown:

- **First year:** Start your degree and study with other medicine, dentistry, and podiatric medicine students.
- **Second year:** Achieve the minimum selection GPA/WAM at the end of the year to progress to third year.
- **Third year:** Start to complete first year units of your postgraduate studies and once you pass, you'll graduate from the Bachelor of Biomedicine (Specialised).

Eligibility and admission requirements for all applicants

- To be considered a domestic applicant, you must be either an Australian or New Zealand citizen or a permanent resident of Australia.
- All applicants must meet UWA's English language competence (ELC).
uwa.edu.au/study/elc
- Assured Pathways are exclusive to school leaver applicants (Year 12 or equivalent) or people who have recently completed and have not commenced in university studies or vocational training at diploma level or above.
- Applicants who attain a place in an Assured Pathway must first undertake undergraduate degree studies at UWA and meet academic minimum requirements.
- Some courses have prerequisites. For more information on Assured Pathway prerequisites, refer to the recommended and prerequisite subject section on page 8.

Interstate applicants

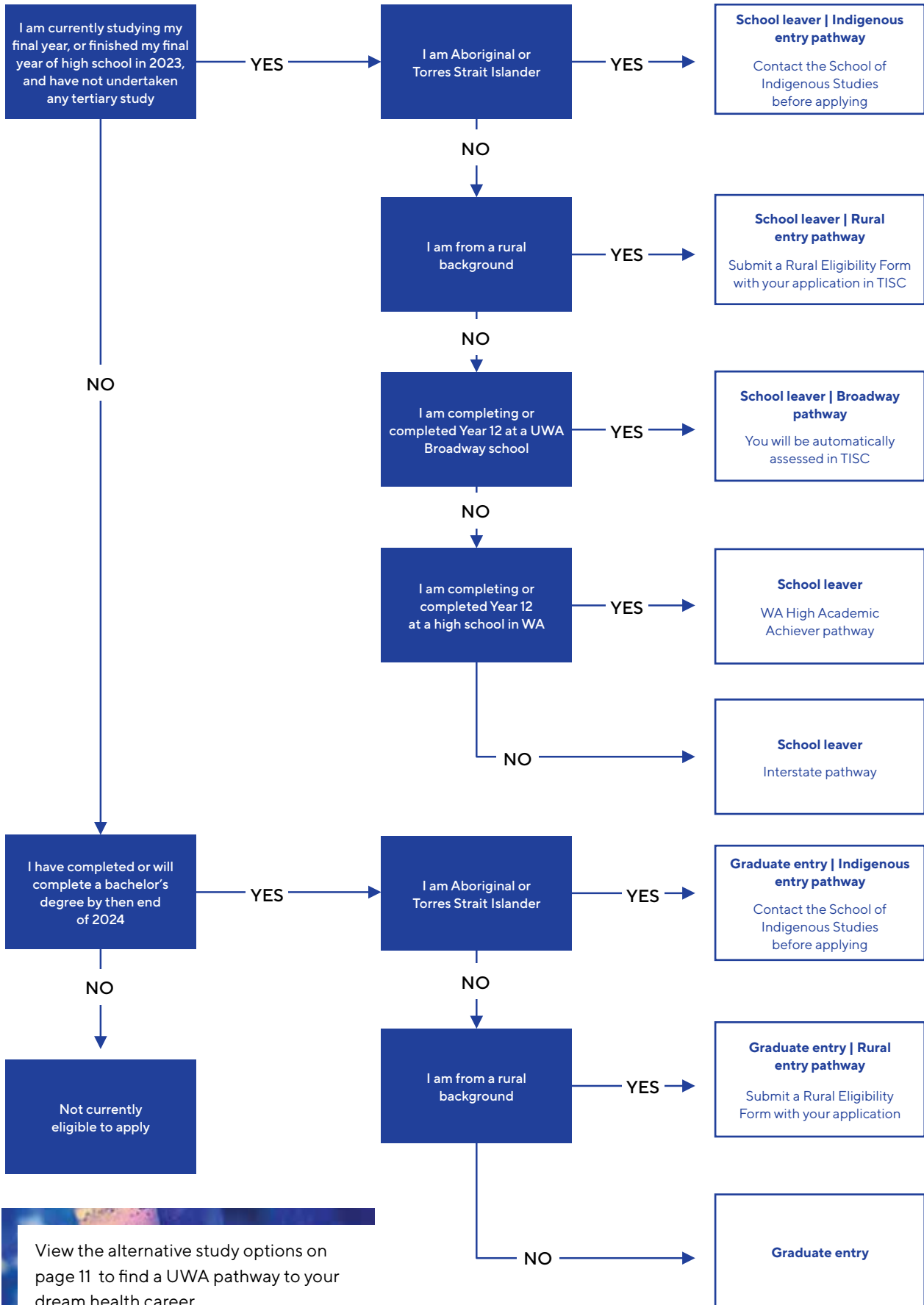
If you completed your high school studies outside of Western Australia, we have a limited number of Medicine and Dentistry Assured Pathway places available. You'll be automatically assessed when you submit your application.

Assured Pathway entry for school leavers

ELIGIBILITY	MEDICINE	DENTISTRY	PODIATRIC MEDICINE
High Academic Achievement	<ul style="list-style-type: none"> • Minimum ATAR of 98 • Interview • Valid UCAT ANZ score 	<ul style="list-style-type: none"> • Minimum ATAR of 98 • Interview • Valid UCAT ANZ score 	<ul style="list-style-type: none"> • Minimum ATAR of 94 • Interview
Broadway	<ul style="list-style-type: none"> • Broadway eligibility • Minimum ATAR of 98* • Interview • Valid UCAT ANZ score 	<ul style="list-style-type: none"> • Broadway eligibility • Minimum ATAR of 98* • Interview • Valid UCAT ANZ score 	<ul style="list-style-type: none"> • Broadway eligibility • Minimum ATAR of 94 • Interview
Rural	<ul style="list-style-type: none"> • Rural rating • Minimum ATAR of 98* • Interview • Valid UCAT ANZ score 	<ul style="list-style-type: none"> • Rural rating • Minimum ATAR of 98* • Interview • Valid UCAT ANZ score 	<ul style="list-style-type: none"> • Rural rating • Minimum ATAR of 94 • Interview
Indigenous	<ul style="list-style-type: none"> • Aboriginal and/or Torres Strait Islander status (see page 6) • Approximate ATAR of 90, contact School of Indigenous Studies when applying • Interview by the School of Indigenous Studies • Optional: Valid UCAT ANZ score 	<ul style="list-style-type: none"> • Aboriginal and/or Torres Strait Islander status (see page 6) • Approximate ATAR of 90, contact School of Indigenous Studies when applying • Interview by the School of Indigenous Studies • Optional: Valid UCAT ANZ score 	<ul style="list-style-type: none"> • Aboriginal and/or Torres Strait Islander status (see page 6) • Contact the School of Indigenous Studies regarding minimum ATAR • Interview by the School of Indigenous Studies

*Check for Broadway and rural adjustment points.

Eligibility for entry pathways



View the alternative study options on page 11 to find a UWA pathway to your dream health career.

Rural and Broadway entry pathways



At UWA we recognise the importance of mentoring and supporting students from diverse backgrounds to succeed at university.

Broadway

Broadway UWA secondary schools must meet one or more of the following criteria:

- be located in regional or remote Western Australia
- be in metropolitan Perth and have a three-year average ICSEA* score at or below the WA median and/or
- be identified as an Aspire UWA school

You'll be eligible for consideration as a Broadway Assured Pathway applicant if you have undertaken your entire Year 12 studies, including WACE, at a Broadway UWA school and meet the relevant minimum eligibility requirements.

ATAR adjustment: Broadway

Broadway-eligible students will receive a positive adjustment to their selection rank.

If your adjusted ATAR meets the course minimum requirement, you'll be considered for the Broadway quota, as well as the rural quota if you are also a rural eligible student. TISC will identify all eligible Broadway applicants and adjust their selection rank automatically. Applicants will be notified of the adjustment in their Universities Admission Advice Letter issued by TISC.

* ICSEA stands for the Index of Community Socio-Educational Advantage, developed by the Australian Curriculum, Assessment and Reporting Authority (ACARA).

uwa.edu.au/study/broadway

Rural

You are eligible for consideration for the rural Assured Pathway if your principal home address has been in an area defined by the Department of Health as rural, remote, or very remote according to the Modified Monash Model (MMM) for any five consecutive years, or at least 10 years cumulatively. doctorconnect.gov.au

UCAT ANZ and interview support

Financial support may be available for rural students who need to fly to Perth to sit UCAT ANZ or attend an interview. Conditions apply – for further details contact: ruralstudent@rcswa.edu.au

TISC application guidance

UWA's Future Students team can help you with advice on applying through TISC, preference order, and the application process for the Assured Pathway quotas.

For further details contact the UWA Future Students team: ask.uwa.edu.au

Indigenous Support Program

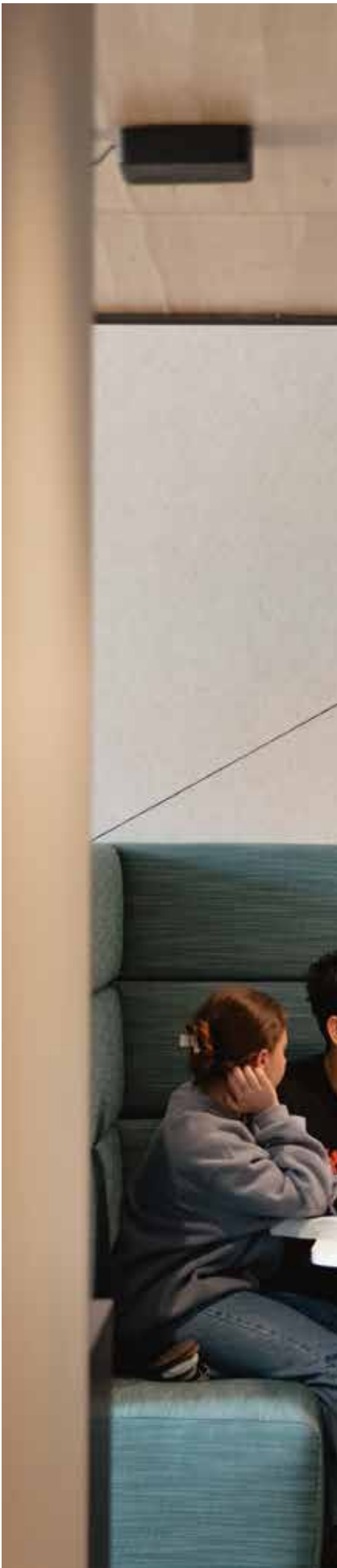
If you identify as an Australian Aboriginal and/or Torres Strait Islander, and are accepted as such by the community in which you live or have lived, you are eligible for consideration as an Indigenous Assured Pathway applicant. To apply, you must provide a Confirmation of Aboriginality document that has been endorsed by an incorporated Aboriginal and/or Torres Strait Islander organisation who can verify your Aboriginal and/or Torres Strait Islander status. The School of Indigenous Studies (SIS) will provide you with ongoing support during the admissions process, prior to your commencement of studies at UWA and during your university studies. You can access study areas and extra academic support through SIS at Bilya Marlee.

- **Assured Pathway (for school leavers):** Indigenous students need an approximate ATAR of 90, although, SIS can also recommend students with a slightly lower ATAR, and the UCAT ANZ is optional.
- **Graduate entry (for graduates with a university degree):** An interview with the Centre for Aboriginal Medical and Dental Health and SIS is required as part of the entry requirements for Medicine, Dentistry, Podiatric Medicine and Pharmacy.

Contact us for information on these entry pathways:

Admissions: admissions@uwa.edu.au

School of Indigenous Studies: sis@uwa.edu.au



Graduate entry

If you have commenced tertiary studies or do not qualify for an Assured Pathway you can work towards graduate entry into a postgraduate professional degree.

Your undergraduate degree can be in any chosen field of study; however, some prerequisites apply for Optometry, Podiatric Medicine and Pharmacy. There are no restrictions placed on the length of time since the completion of the bachelor's degree. UWA considers all Australian bachelor's degrees equally and does not give preference or apply scaling to any particular degree or university. Qualifications obtained outside Australia are assessed according to the National Office of Overseas Skills Recognition.

Admission requirements

Medicine and Dentistry

- Australian bachelor's degree or equivalent with minimum Grade Point Average (GPA) of 5.5 (as calculated by UWA Admissions)
- Suitable GAMSAT score
- If eligible, fulfil Indigenous or rural quota requirements
- Interview

For more information regarding GAMSAT visit:

gamsat.acer.org

Optometry, Podiatric Medicine and Pharmacy

- Australian bachelor's degree or equivalent with minimum Weighted Average Mark (WAM) of 65% (as calculated by UWA Admissions)
- Fulfil prerequisite areas of study
- If eligible, fulfil Indigenous or rural quota requirements
- Interview

Note: entry to these courses is highly competitive, with GPA/WAM and GAMSAT scores for successful applicants typically well above the minimum entry requirement.

The GPA or WAM used for admission is calculated as per published guideline on the relevant course page, and may be different to the GPA or WAM reported on your transcript.

Prerequisites and recommended prior study

The Doctor of Medicine and Doctor of Dental Medicine do not have any subject prerequisites for admission. However, applicants may benefit from having prior studies in Physics (ATAR or higher), Biology or Human Biology (tertiary level) and Chemistry (tertiary level) when undertaking the GAMSAT.

Pharmacy prerequisites:

- Chemistry – ATAR or university unit
- Mathematics or Statistics – ATAR or university unit
- Pharmacology – university unit
- Microbiology – university unit

Podiatric Medicine prerequisites:

Demonstrated knowledge in at least two of the following areas at a tertiary level: physiology, pharmacology, anatomy, human biology, microbiology, genetics, immunology or biological chemistry.

Optometry prerequisites:

- Bachelor of Biomedical Science or equivalent
- Chemistry – ATAR or university unit
- Mathematics or Statistics – ATAR or university unit
- Pharmacology – university unit
- Microbiology – university unit

Check the relevant course page for more information on prerequisites.

Exclusive for graduate entry: Doctor of Optometry

WA's first and only Doctor of Optometry (OD) degree is an exciting course designed to meet the growing demand for eye specialists in Australia. This hands-on and industry supported degree prepares you with the professional attributes and skills required for professional practice, with strong employment and salary prospects. The Doctor of Optometry is a three-year program.

uwa.edu.au/study/d/optometry

For more information on admission requirements, visit the Health and Biomedical Sciences webpage.





How to apply

1. UCAT ANZ registration

School leaver applicants who wish to be considered for an Assured Pathway to either Medicine or Dentistry must sit UCAT ANZ in the year they will submit their TISC application. Results cannot be carried over from one year to the next. Visit the UCAT website for a range of preparation materials.

Applicants are responsible for making their own arrangements to register for the UCAT ANZ. Refer to the UCAT ANZ website, which explains the test in detail and sets out the procedures for registration including the fees payable, test centre procedures and regulations.

ucat.edu.au

2. TISC application

Applicants are required to lodge a TISC application, entering the relevant course code(s). TISC receives and processes applications for undergraduate degrees on behalf of the four public universities in Western Australia. You can list up to six courses in order of preference.

Our UWA Admissions staff will communicate with you using the details you've provided in TISC. You'll also be notified one to two weeks prior to an interview via this email address.

It's important to use your own contact details on your application via TISC, and to access your email regularly. We encourage you to use your personal email address as your school email may become inaccessible when offers are being issued. Additionally, we advise not to provide contact details of your parents or guardians. In order to protect your privacy, we will only discuss your application with you directly.

3. Rural applicants

Rural applicants must submit UWA's Rural Eligibility Form with their TISC application by the TISC deadline.

4. Interview

For Medicine and Dentistry, interviews are offered to the top ranked candidates based on their UCAT ANZ score, with a limited number of interview spots offered across the rural, Broadway, WA school leaver, and interstate pathways.

For Podiatric Medicine, all eligible candidates will be offered an interview.

If you are shortlisted for an interview you'll be provided with information to help you prepare and feel confident about what to expect on the day.

Interviewees and interviewers are required to agree to a statement of confidentiality as a condition of participating in the interview process.

As interview dates vary for each course, refer to the admissions tab on the relevant course page for more specific information, including the interview process, as it becomes available.

5. Final ranking for course offers

Final ranking into our Medicine and Dentistry course will be based on ATAR or equivalent (30%), interview (50%) and UCAT ANZ score (20%).

For rural applicants, ranking will be based on ATAR or equivalent (22.5%), interview (27.5%), UCAT ANZ score (15%) and rurality rating (25%).

Important notes

Recommended and prerequisite subjects

There are no mandatory prerequisite subjects, however, there are recommended ATAR subjects for Assured Pathways (these may be taken in the first year of university if not taken at ATAR level).

- Chemistry ATAR
- Mathematics Applications ATAR (or higher)



Timeline

DATE	ASSURED PATHWAY APPLICATION PROCESS
Early March	UCAT ANZ registration and bookings open (Medicine and Dentistry only)
May	TISC applications open
Late May	UCAT ANZ registration and bookings close (Medicine and Dentistry only)
July	UCAT ANZ testing (Medicine and Dentistry only)
Late September	TISC applications close. No late applications accepted
Late October / Early November	WACE Exams
Mid-November	Interview offers made after last WACE exam
Late November / Early December	Interviews
Late December	December round offers made according to TISC timeline
Mid-January	January round offers made according to TISC timeline
Late February	Commence UWA bachelor's degree (unless deferred)

The above dates are correct as of March 2024 and may be subject to change by UCAT and TISC. Check the relevant websites for key information and application dates.

ucat.edu.au

tisc.edu.au

Frequently asked questions

How many offers are made each year?

COURSE	DOMESTIC PLACES	INTERNATIONAL PLACES	FROM ASSURED PATHWAY
Medicine	206	40	Up to 50%
Dentistry	50	20	Up to 50%
Podiatric Medicine	30	5	Up to 70%
Pharmacy	100 places in total		

How can I prepare for the interview?

We recommend you focus on your ATAR and UCAT preparation (or achieving a high GPA and GAMSAT score) as interviews are only offered to those who score at a certain ranking based on those assessments. There is interview preparation information provided to all students who are offered an interview. We do not endorse any external interview preparation courses.

Can I take a year off if I have an Assured Pathway place?

If you are offered a place in an Assured Pathway, you can take a year off before commencing your Bachelor of Biomedicine (Specialised) - this is known as deferring your offer. Once you commence in the bachelor's degree, you'll be expected to study full-time across six years, so consider your choice to defer carefully.

Deferrals are not available for people offered a graduate entry place.

Is there an Assured Pathway to pharmacy?

From 2025, UWA will offer a combined bachelor's and master's degree in pharmacy: the Bachelor of Human Sciences (Pharmaceutical Health Extended Major) and Master of Pharmacy*. Following successful completion of your bachelor's degree you can apply for this course, and this will guarantee you a place in the Master of Pharmacy. You'll be eligible to apply for provisional registration as a pharmacist after graduating from the four-year course.

What is the benefit of the combined bachelor's and master's degree?

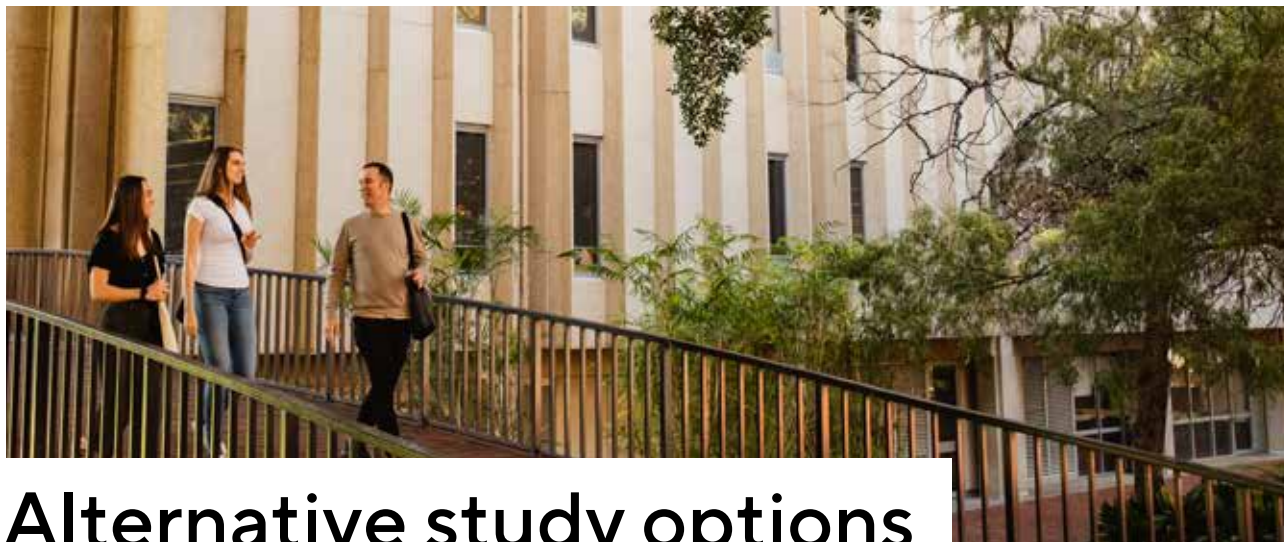
Complete two degrees in as little as four years. An express path to your postgraduate qualification, it begins with advanced postgraduate-level studies in the third year of your bachelor's degree.

How will I know when the Bachelor of Human Sciences (Pharmaceutical Health Extended Major) and Master of Pharmacy has been approved?*

Register your interest below and we'll be in touch with more information from mid-2024.

*Subject to final approval. View our website for more information.





Alternative study options

What if I don't secure a place for my first preference course at UWA?

Medicine, Dentistry and Podiatric Medicine are high demand courses with limited places available. If you don't secure a place in an Assured Pathway, we're here to help you find a pathway to your dream career.

You can apply to study one of our other undergraduate degrees and apply for graduate entry on successful completion.

Bachelor of Biomedicine (Specialised)

The Bachelor of Biomedicine (Specialised) is a practical degree providing learning across a broad range of health and medical disciplines, designed to articulate with UWA's health professional degrees. Multiple specialisations within the biomedical disciplines are offered to enable breadth and depth of learning in your field of interest, including Aboriginal Health and Wellbeing, Human Biology, Genetics, Biochemistry, Physiology, Pharmacology Microbiology and Pathology.

Bachelor of Biomedical Science

Our Bachelor of Biomedical Science encompasses the biological basis of human structure and function, and the application of this knowledge to disease, wellbeing and society. It's a flexible, practical and exciting degree designed to meet growing global demand for health graduates. Our state-of-the-art biotechnology facilities provide you with hands-on experience in the latest advancements, while our pathology labs offer a window into the intricate workings of healthcare diagnostics.

Bachelor of Science

Our Bachelor of Science gives you the skills and knowledge to make a real contribution to the challenges facing humanity. Scientists study the universe, its properties, the life that exists within it and the laws that govern it. Discipline areas range from cutting-edge pure and applied science to new multidisciplinary fields.

Postgraduate courses in health

Healthcare and social assistance is Australia's largest and fastest-growing industry, with a significant number of jobs. Studying a health and biomedical sciences degree will see you graduate with the skills and knowledge to help address some of the world's most challenging healthcare issues. You can apply for one of our postgraduate courses in health after you complete your undergraduate degree:

- Master of Infectious Diseases
- Master of Clinical Pathology
- Master of Public Health
- Master of Exercise Science
- Master of Clinical Audiology

Search our courses on our website to find more postgraduate degrees that can take you to a range of careers in health.

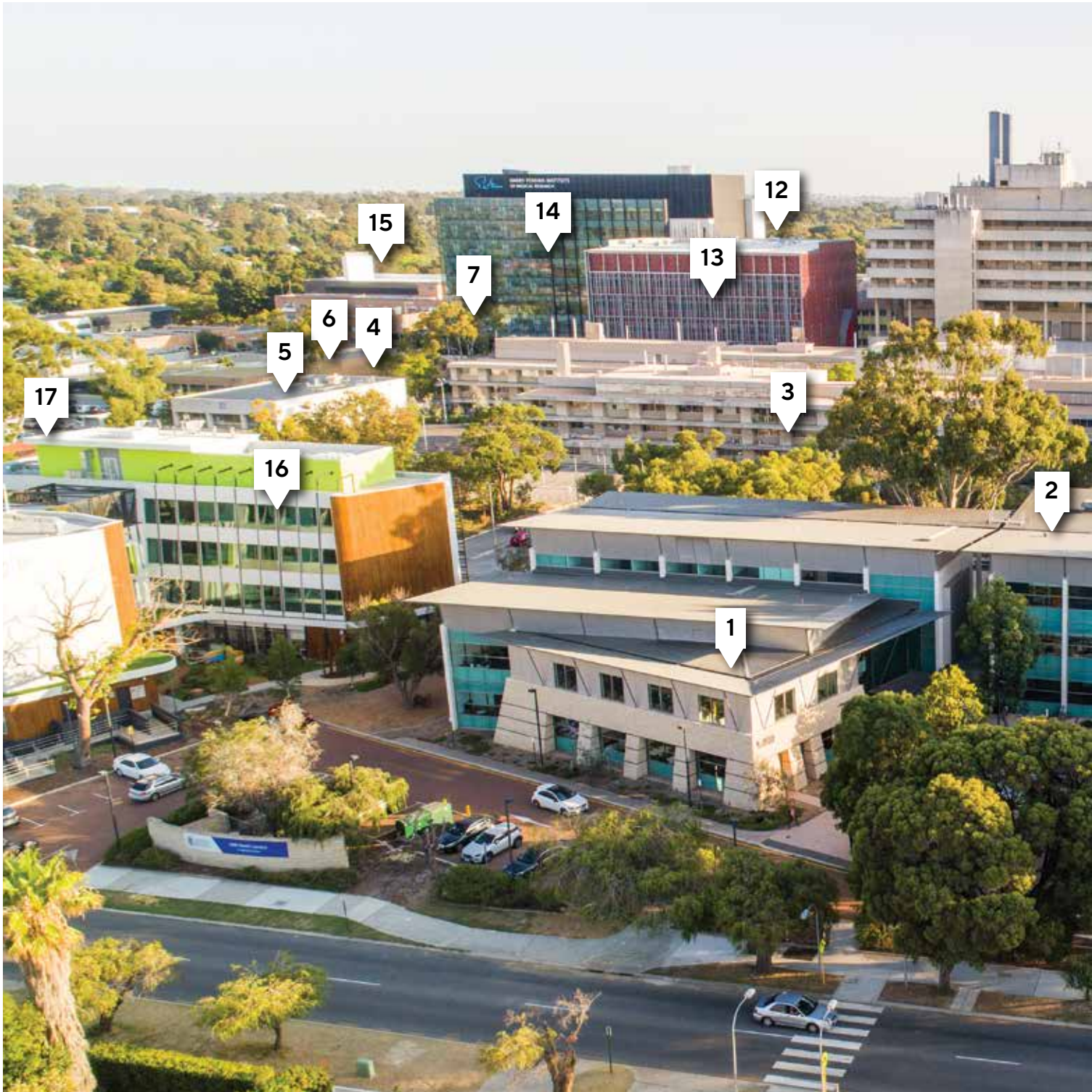
uwa.edu.au/study/health

Experience-based entry

If, for any reason, you still do not meet the requirements, we encourage you to apply through Experience-based entry.

Experience-based entry allows you to apply using a combination of academic and life experiences with your results.

uwa.edu.au/study/experience-based-entry



1. UWA Library
2. UWA Dentistry
3. UWA Biomedical Sciences
4. UWA Medicine
5. UWA Optometry
6. UWA Lecture Theatres
7. UWA Biomedical Engineering Research
8. Oral Health Centre of WA
9. Perth Children's Hospital
10. Telethon Kids Institute
11. Sir Charles Gairdner Hospital
12. Lions Eye Institute
13. PathWest Laboratory Medicine WA
14. Harry Perkins Institute of Medical Research
15. Perron Institute for Neurological and Translational Science
16. Ronald McDonald House Charities
17. Cancer Council WA Crawford Lodge



UWA Health Campus

Based at the Queen Elizabeth II
Medical Centre (QEII MC)

Surrounded by working hospitals and internationally
renowned organisations

UWA academics and students
embedded in these organisations

State-of-the-art
teaching and research facilities

Why choose UWA?



1st in Western Australia for Clinical Medicine Anatomy and Physiology

3rd in Australia and **35th in the world** for Clinical Medicine (ARWU 2023)

Study at an **internationally recognised** university

Ranked in the **world's top 100 universities**
(RANKED 72 IN QS 2024)

Well-established **industry partnerships**

Member of the **Group of Eight**, Australia's best research-intensive universities

MAKE FRIENDS AT WA'S MOST VIBRANT CAMPUS, WITH MORE THAN 160 CLUBS AND SOCIETIES



5-STAR RATING STUDENT TEACHER RATIO, LEARNER ENGAGEMENT AND SKILLS DEVELOPMENT
(GOOD UNIVERSITIES GUIDE 2024)



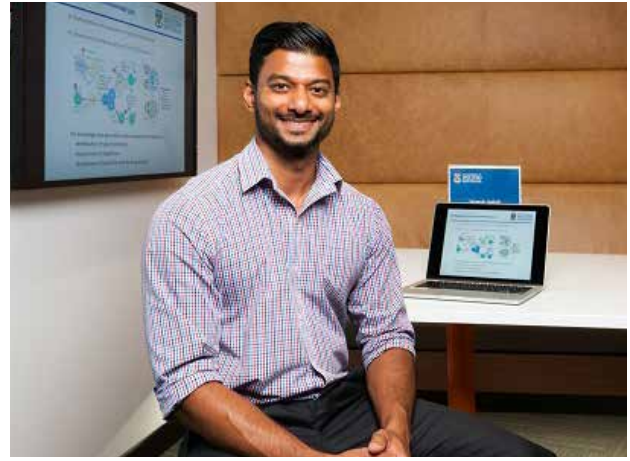
ENJOY THE SCENERY OF MATILDA BAY



“ The patient interaction is one of the many highlights of the Doctor of Dental Medicine course. Having time at the Oral Health Centre of WA allows us to treat patients with a range of medical and dental conditions, while developing our communication, treatment planning, problem solving and technical skills to the benefit of their oral health.

We are extremely lucky to have access to the cutting-edge digital technologies that have recently arrived at the School, including 3D scanning and facilities for the computer-aided design and manufacture of restorations for our patients. ”

EMMA
DOCTOR OF DENTAL MEDICINE



“ UWA offers one of the best Doctor of Medicine degrees in Australia in my opinion. The early placements within the health system and the focus on independent learning and research prepare you for when you graduate and enter the field. I wanted to study medicine because I knew it would be a challenging but rewarding career for me.

One of the most enjoyable aspects of the course is the clinical rotations in hospitals with unique opportunities to learn and develop our clinical skills as well as being organised and effectively communicating in the workplace under the guidance of senior doctors. ”

YOGESH
DOCTOR OF MEDICINE



Stay up-to-date with UWA

Get the lowdown on UWA events, our career-enhancing program, student opportunities, study tips and everything you need to know about applying.



THE UNIVERSITY OF
**WESTERN
AUSTRALIA**

Get in touch

CALL US
131 UWA (131 892)

CHAT ONLINE
uwa.edu.au/study
Mon-Fri 2-4pm (AWST)

ASK US A QUESTION
ask.uwa.edu.au

BOOK AN APPOINTMENT
seek.uwa.edu.au/appointments

VISIT US
Student Central,
The University of Western Australia
35 Stirling Hwy, Perth

Stay connected

 [universitywa](https://www.facebook.com/universitywa)  [uwanews](https://twitter.com/uwanews)  [universitywa](https://www.instagram.com/universitywa)  [universitywa](https://www.youtube.com/universitywa)