

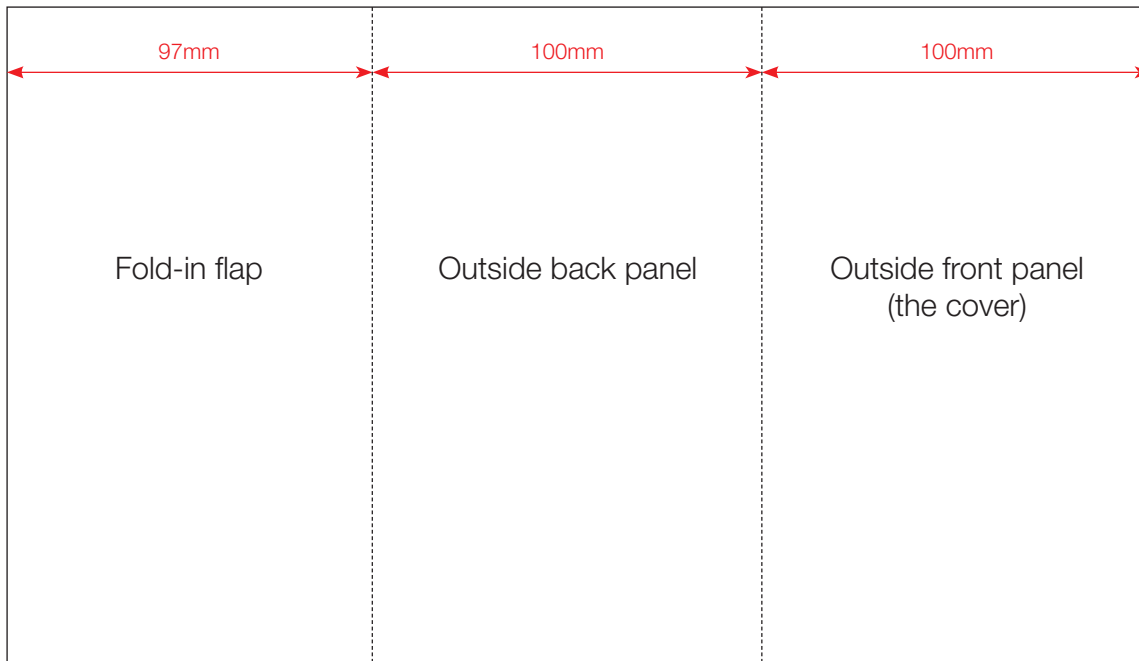
DL brochures: Margins

Aim: To provide instruction on how to set margins on a DL brochure to allow for correct folding

To allow for the correct folding of your DL brochure please follow the set up as laid out below. This set up allows the narrower fold-in flap to sit neatly behind the front panel.

The inside margins for where you place your text can be whatever setting you desire, but it is best to allow at least 8mm from the outside edges and the fold lines.

Outside of brochure



Inside of brochure

