

START HERE

1. Does it have legs?

YES go to **3**

NO go to **2**

2. Does it have a shell?

YES It is a **SNAIL**

NO It is an **EARTHWORM**

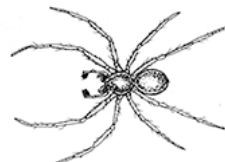


3. How many legs does it have?

6 LEGS go to **4**

8 LEGS It is a **SPIDER**

LOTS OF LEGS go to **9**



4. Does it have wings?

YES go to **5**

NO go to **7**

5. Are the wings coloured or white?

YES It is a **BUTTERFLY** or **MOTH**

NO go to **6**



6. How many wings does it have?

2 WINGS go to **8**

4 WINGS go to **12**

7. Is its body divided into parts?

YES It is an **ANT** or **TERMITE**

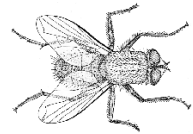
NO It is a **CATERPILLAR**



8. Does it have hard covers over its wings?

YES It is a **BEETLE**

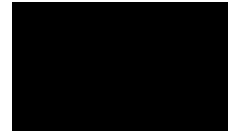
NO It is a **WASP, BEE** or **FLY**



9. Does it have lots of legs and curl up into a ball?

YES It's a **SLATER** (also called a **WOODLOUSE**)

NO go to **10**



10. Does it have nearly 100 legs?

YES It is a **CENTIPEDE**

NO go to **11**

11. Does it have lots and lots of legs?

YES It is a **MILLIPEDE**

NO I'm not sure what you have found.
Maybe your teacher knows.

12. Are the wings folded back?

YES It is a **GRASSHOPPER**

NO It is a **DRAGONFLY**

