

2022 UWA Breakfast Presentation

25 February 2022

*The information in this publication is current as at 25 February 2022 and is subject to change.
You can find updated information on our website at uwa.edu.au/study.*

Naseem Mkandawire

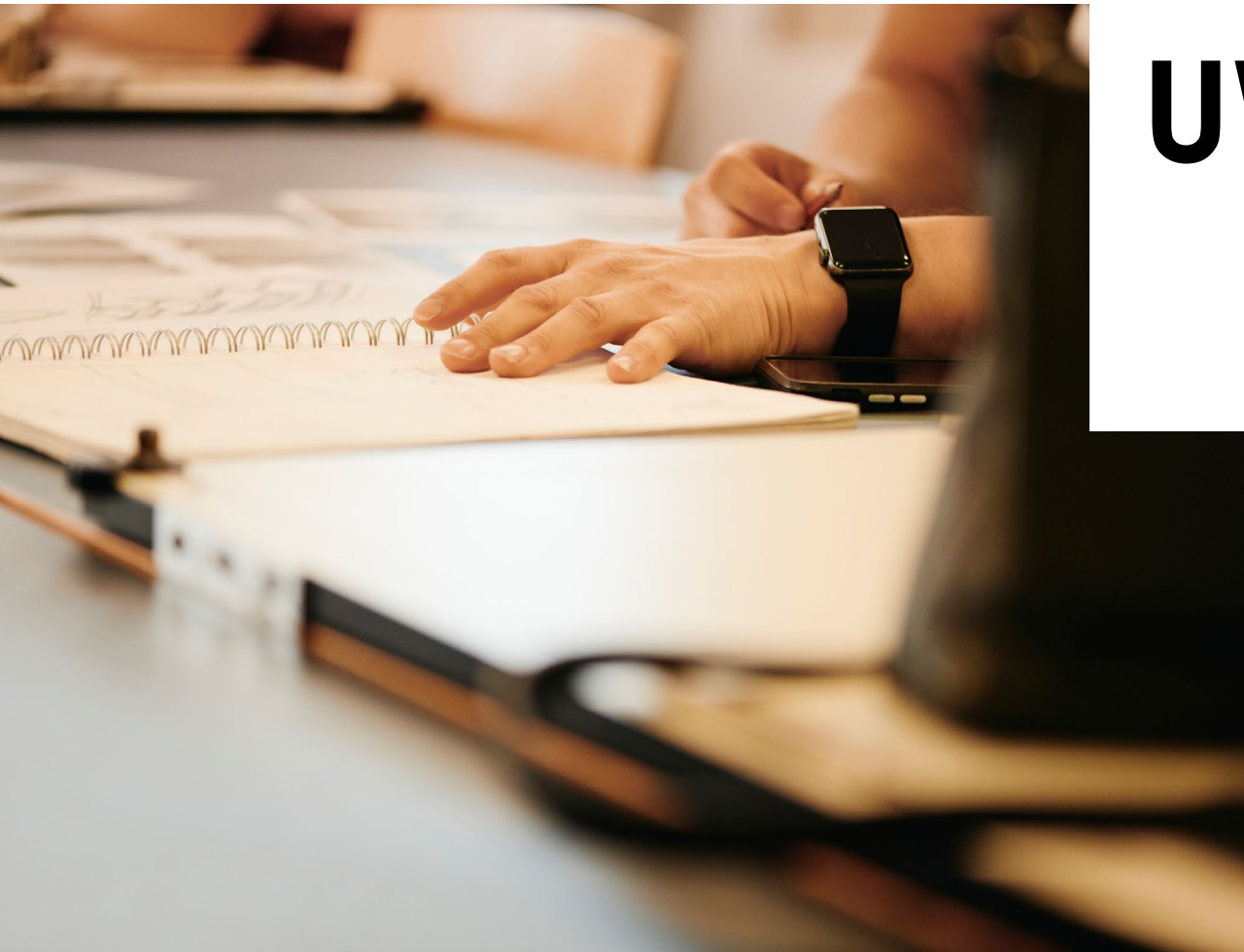
Manager, School Engagement Team

School Engagement Overview



School Engagement Team

Team Member	Position
Aimee Nicolas	School Coordinator
Oliver Harrington	School Coordinator
Jocelle Co	School Relationship Manager
Lucille Spierenburg	School Relationship Manager
Michael Wade	School Relationship Manager
Janelle May	School Partnership and Programs Coordinator
Naseem Mkandawire	School Engagement Manager



UWA's newsletters

Subscribe by emailing -
schools@uwa.edu.au



Online resource for you



Career advisers and teachers

We are excited to support you in your vital role of mentoring students through their transition from school to university. Here you can access resources, request school visits or on-campus experiences, and keep up to date with the latest information to help your students find their path to UWA.



uwa.edu.au/study/for-teachers

School Engagement team

The School Engagement team supports students in Years 10–12 to make informed decisions about their future study options. Our team can advise on UWA courses, opportunities, scholarships, accommodation options, admissions pathways and more.

Please contact us directly for further information and to book:



UWA OPEN DAY ONLINE

**SUN 27 MARCH
10AM - 3PM**



THE UNIVERSITY OF
**WESTERN
AUSTRALIA**



2022 Events

UWA Open Day Online	Sunday 27 March
Early Offers Information Session	Tuesday 5 April
UWA Albany's Info Day	Thursday 7 April
Campus Tour	Thursday 5 May
Application Help Day	Sunday 27 May
Campus Tour	Monday 4 July
Parent Information Session	Tuesday 9 August
Welcome Campus Tour	Thursday 29 September
Career Advisers and Teachers Professional Development	Friday 18 November

uwa.edu.au/study/events



School Engagement Team


T: 08 6488 3396

E: schools@uwa.edu.au

Jocelle Co

School Relationship Manager

School Engagement Presentation

A man with glasses and a red and black striped t-shirt is sitting on a blue couch, looking at a laptop. A woman with long dark hair and a plaid jacket is sitting next to him, looking at the laptop. The background is a modern office setting with grey acoustic panels.

UWA

Early Offers

Early Offers

Key changes

1. Removal of the three points and one point buffer
2. Minimum predicted ATAR of 80* to be eligible for an Early Offer
3. For courses that require $<$ ATAR of 80, students must still meet the minimum predicted ATAR of 80*
4. For courses that require $>$ ATAR of 80, students must have a predicted ATAR that meets the requirement

*Broadway schools – ATAR of 78

Predicted ATAR entry

Receive an early offer based on end of Y11 or mid Y12 reports. We'll calculate predicted ATAR for students.

STAT entry

If a student is not taking enough ATAR subjects or not taking any at all, they can apply via STAT.

ATAR based entry

Use your final Year 12 ATAR to apply for UWA courses.

**Applications open:
Monday 4 April 2022**

For more information and updates:
Search 'UWA Early Offers'



Early Offers

Who's eligible?

Current students in 2022 who are:

- Domestic Year 12 WACE students
- International Year 12 WACE students
- WA International Baccalaureate (IB) students



Admission requirements

✓ **WACE**

✓ **Predicted ATAR
(Year 11 or Year 12)**

Minimum predicted ATAR of 80
(Broadway ATAR of 78)
Meet the ATAR requirement for the nominated
course

✓ **Final Year 12 ATAR**

Early Offer holders must have a final Year 12 ATAR
(unless taking the STAT pathway)

✓ **English requirement**

Final scaled mark of 50 or above in WACE ATAR
English, Literature or English as an Additional
Language OR Dialect (EALD), OR;
Complete the PACM1101 unit in first semester or a
UWA approved English test

✓ **Subject prerequisites &
special requirements**

Final scaled mark of 50 or above in Year 12 WACE
ATAR subjects or by completing bridging units in first
semester

Early Offers eligible courses

- Any undergraduate degree
- Combined Bachelor's and Master's (CBM)
- Non-quota limited Assured Pathways:
Architecture, Landscape Architecture, Law,
Translation Studies, and Teaching

NOT available for Early Offers

- Quota limited Assured Pathways: Medicine,
Dentistry, Pharmacy and Podiatry

Special Tertiary Admissions Test

STAT can be used in two ways:

- 1. To meet entry requirements to UWA's comprehensive degrees**
 - Refer to the STAT calculator on the TISC website for required entry scores
 - UWA Admissions will grant permission to sit the STAT through the students offer letter
- 2. To satisfy university English competency requirements (all degrees)**
 - 140 in the Verbal Multiple-choice section; and 140 in the Written English essay section
 - STAT is offered automatically to students completing ATAR English, Literature or EALD

Please check the TISC website for STAT session dates.

Early Offers Scenario 1



A student applies for the Bachelor of Commerce that requires an ATAR of 80.

Their predicted ATAR is 80.00.

They will receive an Early Offer and can maintain that offer if they achieve:

- ✓ WACE
- ✓ A final Year 12 ATAR
- ✓ English requirement
- ✓ Prerequisites through Year 12 WACE ATAR subjects or by completing bridging units

Early Offers

Scenario 2

A student applies for the Bachelor of Commerce that requires an ATAR of 80.

Their predicted ATAR is 75.00.

They will receive a conditional offer with the requirements to achieve:

- ✓ WACE
- ✓ A minimum final Year 12 ATAR for their nominated course or satisfy entry through STAT
- ✓ English requirement
- ✓ Prerequisites through Year 12 WACE ATAR subjects or by completing bridging units



Early Offers

Scenario 3

A student from a BROADWAY school applies for the Bachelor of Commerce that requires a Broadway-adjusted ATAR of 70.

Their predicted ATAR is 75.00.

They will receive a conditional offer with the requirements to achieve:

- ✓ WACE
- ✓ A minimum final Year 12 ATAR for their nominated course or satisfy entry through STAT
- ✓ English requirement
- ✓ Prerequisites through Year 12 WACE ATAR subjects or by completing bridging units

Early Offers 2023 entry

For more information and updates:

Search 'UWA Early Offers'

Entry pathways



School leaver

- ATAR
- First in Family
- Fairway UWA (Year 11)
- UWay (Year 12)



Indigenous pathways

- Aboriginal Orientation Course
- Provisional Entry Scheme



Tertiary studies

- AccessUWA
- UWA Smart Start (Albany)
- Enabling program
- Diploma studies
- Previous university studies



Wait till you're 20

- Mature-age Access Program
- Special Tertiary Admissions Test



UWA

courses

Agricultural, Environmental and Biological Sciences	Architecture, Design and Planning	Business and Commerce	Data and Computer Science	Education	Engineering
Health and Biomedical Sciences	Humanities and Social Sciences	Law	Music and Fine Arts	Physical Sciences and Mathematics	Psychology

Seek a degree that sets you up for a career you're passionate about



Comprehensive bachelor's degrees

Degrees	ATAR*
Arts	75
Biomedical Science	80
Business	75
Commerce	80

Degrees	ATAR*
Environmental Design	75
Science	75
Philosophy (Honours)	98

*or equivalent

Bachelor of Commerce **Business Analytics**

- Only university in WA to offer this as a major
- Final year capstone experience
 - Industry-focused internship;
 - Semester-long business development project; OR
 - Economic analytics project
- Recommended subject:
 - Mathematics Methods ATAR





Specialised bachelor's degrees

Degrees	ATAR*
Advanced Computer Science (Honours)	92
Agribusiness	80
Agricultural Science	80
Biological Science	80
Chemistry	80
Earth Sciences	80
Economics	85
Engineering (Honours)	80

Degrees	ATAR*
Environmental Science	80
Human Sciences	80
Marine Science	80
Molecular Science	80
Music	75
Philosophy, Politics and Economics	90
Psychology	80
Sport and Exercise Sciences	80

*or equivalent



Integrated honours bachelor's degrees

Degrees	ATAR*
Advanced Computer Science (Honours)	92
Engineering (Honours)	80
Philosophy (Honours)	98

Bachelor of Engineering (Honours)

Become an industry-ready engineer in just four years

Bachelor of Engineering (Honours) majors available (4 years, ATAR 80)

- Automation and Robotics
- Biomedical
- Civil
- Chemical
- Electrical and Electronic
- Environmental
- Mechanical
- Mining
- Software

Subject prerequisites

- Mathematics Methods ATAR, and at least one of the following three subjects*:
- Mathematics Specialist ATAR or
- Chemistry ATAR or
- Physics ATAR

**All four subjects are recommended. If a student does not have all four subjects, they will need to complete extra units in first year, which may mean taking additional units to meet the course requirements*



Bachelor of Engineering (Honours)

- Incorporates professional practicums, industry projects and practical learning, with additional one-week intensive skill development courses:
 - **Engineering communication skills** – finding information, taking and presenting data, technical writing and using technical references
 - **Hands-on engineering skills** – welding, 3D printing, hand and power tools, robotics and soldering
 - **Workplace simulation** – creativity, communication, leadership skills, interview preparation and how to succeed in a modern workplace



Combined bachelor's degrees

Specialised Degree	Comprehensive Degree	ATAR*
Agribusiness	Science	85
Agricultural Science	Arts Commerce Science	85
Engineering (Honours)	Commerce Science	88
	Philosophy (Honours)	98
Environmental Science	Arts Commerce Science	85
Psychology	Arts	85
	Commerce	88

*or equivalent

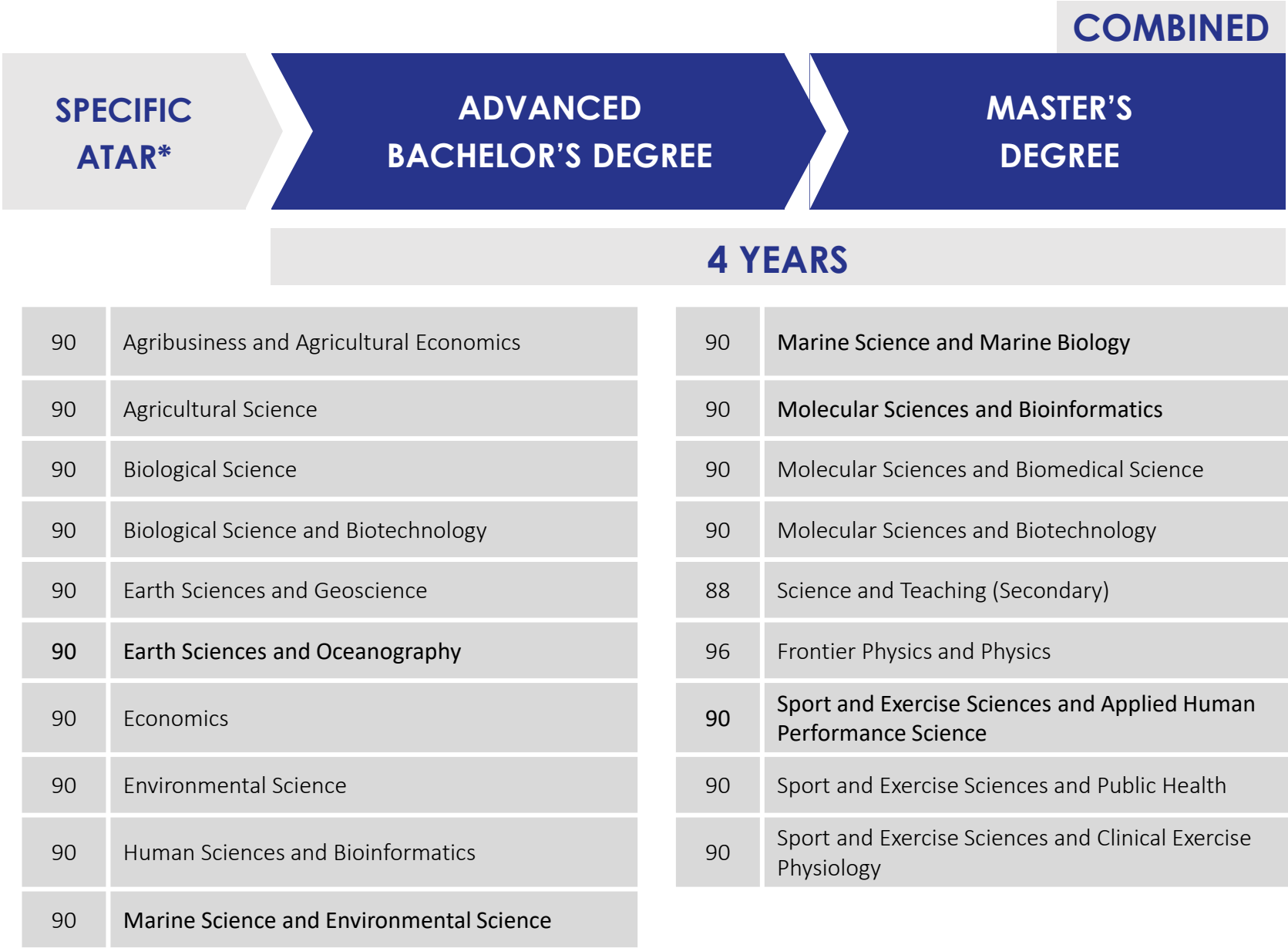


Postgraduate pathways

1. Combined bachelor's and master's degrees
2. Assured pathway



Combined bachelor's and master's pathway



*may vary for courses and may have other requirements

Combined: Science and Secondary Teaching

Bachelor of Science and Master of Teaching (Secondary)

- 4-year pathway
- Only university in WA to offer this degree
- Two specialisations to teach up to Year 12



Combined: Sport and Exercise Sciences and **Applied Human Performance**

Bachelor of Sport and Exercise Sciences and Master of Applied Human Performance Science

- One of the first master's degrees of its kind offered in Australia
- Extensive work integrated learning – total of 360 hours of supervised placement
- Eligible to apply for professional accreditation as an Exercise Scientist with Exercise and Sports Science Australia (ESSA)





Assured pathway



92	Architecture
99	Dentistry
96	Law
92	Landscape Architecture
99	Medicine
94	Pharmacy

94	Podiatry
92	Public Health
80	Teaching (Primary)
80	Teaching (Secondary)
90	Translation Studies

Bachelor of Biomedical Sciences

Podiatric Health and Medical Sciences

- Assured Pathway to Doctor of Podiatric Medicine
- Shorter 5-year pathway
- Eligible to register and work as Allied Health Assistants in Podiatric practice



Bachelor of Biomedical Sciences **Integrated Dental Sciences**

- Assured Pathway to Doctor of Dental Medicine
- 6-year pathway
- Subject prerequisites:
 - Chemistry ATAR
 - Mathematics Applications ATAR



Bachelor of Biomedical Sciences

Integrated Medical Sciences and Clinical Practice

- Assured Pathway to Doctor of Medicine
- 6-year pathway
- Subject prerequisites:
 - Chemistry ATAR
 - Mathematics Applications ATAR



Assured Pathway to Medicine and Dentistry

Application Process

- Applicants must sit the UCAT ANZ
- No Predicted ATAR form required
- Predicted ATAR information will be accessed via TISC
- No late applications; must have a preference for medicine or dentistry listed by the TISC closing date



For more information and updates:
uwa.edu.au/apply-health

What's coming in 2023

- Bachelor of Criminology and Criminal Justice
- Bachelor of Human Rights
- Bachelor of Modern Languages

*The courses listed above are subject to approval

Visit uwa.edu.au/study/new-courses



Support at UWA

- Academic support
 - Personal and wellbeing support
 - Careers and employability services
 - Financial support
 - Settling into uni life
- And more!





THE UNIVERSITY OF
**WESTERN
AUSTRALIA**





THE UNIVERSITY OF
**WESTERN
AUSTRALIA**

BILYA MARLEE





THE UNIVERSITY OF
**WESTERN
AUSTRALIA**



The Living Room

- Partnership with the Young Lives Matter Foundation
- Promote wellbeing through early intervention, peer support and easy access to campus health services
- Trained UWA Peer Supporters and clinical support leaders with extensive experience in mental health



Future Students Centre



131 UWA (131 892)



universitywa



Live chat



universitywa



askUWA



uwanews



Advisory Session



uwastudents



Coursework Scholarships

Loren Osenbaugh

Senior Officer Coursework Scholarships & Prizes

Scholarships Presentation



Fogarty Foundation Scholarships



Apply Now

Applications close Monday 23 May

- The UWA Fogarty Foundation Scholarship Program is one of Australia's premier scholarship programs. It is a joint venture between the Fogarty Foundation and the University of Western Australia, investing in the future leaders of Western Australia.
- Students are provided with holistic support through opportunities to:
 - learn,
 - acquire skills,
 - build assets and,
 - create social networks.
- Leadership and Enterprise Program to expand horizons
- Academic mentoring from UWA Academic faculty
- Access to scholarships for accommodation at University colleges
- Leadership opportunities allowing Scholars to lead projects
- The Scholars Enterprise Investment Program for Scholar led enterprises
- The Scholars and Alumni Network, connecting Scholars with exceptional young people



Academic Excellence

Academic
Excellence
Scholarships
provides financial
support to students
who have
been recognised for
their outstanding
academic results.



Diversity, equity and inclusion

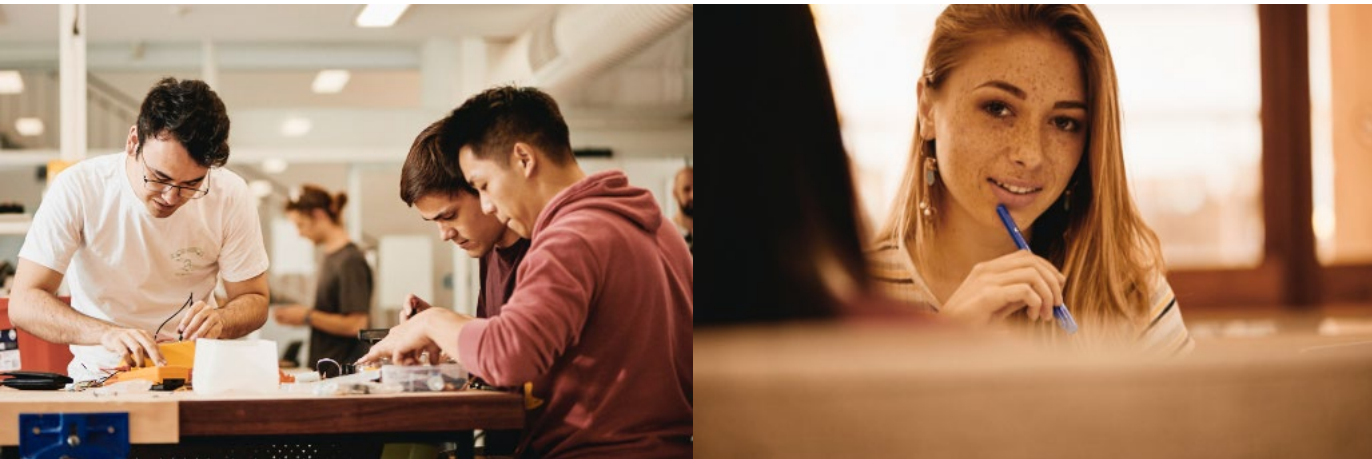
Our Equity Scholarships provide opportunities to students, new or current, who experience educational disadvantage due to varying circumstances.





Global Experience

Our Global
Experience
Scholarships provide
an enriched
educational
experience for both
domestic and
international students.





Leadership, talent and social impact

Our Leadership and Social Impact Scholarships support students with the potential to drive change and become influential leaders across society, industry, sports and academia.





Where to find us

- Student Central, next to the Guild Village
- scholarships.uwa.edu.au
- 08 6488 3834
- courseworkschols@uwa.edu.au | ask.uwa.edu.au