



THE UNIVERSITY OF
**WESTERN
AUSTRALIA**

EDUCATION 2020 STUDY AREA GUIDE

Early Childhood Education and
Care
Education
Educational Leadership
School Psychology

Teaching (Early Childhood)
Teaching (Primary)
Teaching (Secondary)
Tertiary Teaching



Welcome to our community

“The University of Western Australia believes in preparing our graduates to be the change-makers in society. Our high-quality courses and unique course structure will equip you with the multidisciplinary skills needed to succeed and transform the world in which we live, improving the lives of others and the communities we serve.

I welcome you to our community and invite you on an exciting journey to turn your ambitions into reality.”

– Professor Dawn Freshwater, Vice-Chancellor

ACKNOWLEDGEMENT

The University of Western Australia acknowledges that it is situated on Noongar land and that Noongar people remain the spiritual and cultural custodians of their land and continue to practise their values, languages, beliefs and knowledge.



Contents

Why study at UWA?	4
Facilities	6
UWA student life	8
Taking you global	9
Graduate School of Education highlights	10
Choose your degree	11
Pathways to professional careers	12
Master of Teaching (Early Childhood)	14
Master of Teaching (Primary)	16
Master of Teaching (Secondary)	18
Postgraduate courses in education	20
Master of Education	20
Master of Educational Leadership	21
Graduate Diploma in School Psychology	22
Doctor of Education	23
Graduate Certificate in Early Childhood Education and Care	24
Graduate Certificate in Studies	24
Graduate Certificate in Tertiary Teaching	24
Master of Education - Thesis and Coursework	24
Master of Educational Leadership - Thesis and Coursework	24
Master of Studies	25
Additional entry requirements	25
How to apply for a postgraduate course	26
Scholarships	28
Postgraduate fees	29
Supporting you	30
Contact us	31
Course index	31

Why study at UWA?

If you're interested in pursuing a career that focuses on bringing about meaningful change to the world through teaching, UWA's suite of education courses will provide you with the skills, hands-on training and pathways to the career of your choice.

Having been at the forefront of teacher education for more than 100 years, the Graduate School of Education stands as one of the top ten schools of education in Australia (THE World University Rankings by Subject 2019).

Be inspired to learn and inspire others to learn. Be part of the Graduate School of Education tradition. Be challenged by Australia's highly rated researchers who are creating knowledge that informs education policy and practice.

You'll be taught at the top university in WA, where state-of-the-art facilities provide leading learning experiences. Our industry-recognised courses will connect you to local and global communities, providing you with the opportunity to take your career overseas.

Courses

Set yourself apart with a UWA degree. Our education courses equip you with the skills and knowledge to succeed in your career path. You will be taught by world-class lecturers at UWA's Graduate School of Education.

Experience more than just study

University life is about so much more than just study. We have more than 150 clubs and societies you can join to take part in activities you already enjoy or get involved in something new. There are events throughout the year, including O-Day Festival during orientation, food fairs, regional trips, wellness sessions and themed activity weeks.

Notable UWA alumni

In September 2011 the Hon. Dr Elizabeth Constable became the longest-serving female State Parliamentarian in WA, breaking the record set by Florence Cardell-Oliver, who served from February 1936 to April 1956. In November 2008, Elizabeth was appointed Minister for Education, Tourism and Women's Interests in the Barnett ministry, thereby becoming the first independent to be appointed as a Minister of the Crown in Western Australia.

Take your degree global

As part of your learning experience at UWA, you can undertake a semester or a year abroad. We have more than 180 exchange agreements with tertiary institutions all over the world. If you can't commit to a full semester away or want to build on your previous exchange experience, you can complete an internship, practicum, short course or research program overseas.

Connect with industry professionals

We celebrate strong industry partnerships, offering you practical, real-world experiences in addition to valuable networking opportunities. Our network of industry placements also allows you to find uncredited placements, and for-credit placements or practicums can be arranged as part of your degree.

Pursue postgraduate study

Pursuing a higher degree is one of the best investments you can make in yourself. You'll learn from experts in your field and make invaluable contacts before you graduate.

Global networks of knowledge and research

UWA's world-class lecturers and researchers are equipped with the teaching technologies of tomorrow to deliver a leading learning environment for students. A strong focus on knowledge and research capacities means you'll be at the forefront of a rapidly evolving world and ready to succeed in your career of choice.

With more than 60 research institutes and centres, UWA fosters links with local, national and international industries and governments. The strength of our research output makes us appealing to researchers of international standing, many of whom head major research centres with global connections. As a student, you'll benefit from the knowledge and expertise of our staff, with networking opportunities that can lead to career possibilities around the world.



Ranked in the world's Top 100 universities

(QS World University Rankings 2020)



Highest ranked university in Western Australia

(QS World University Rankings 2020)



Ranked in the world's Top 75 for Education

(THE World University Rankings by Subject 2019)



Facilities

UWA Perth campus

UWA brings together heritage architecture and state-of-the-art teaching and research facilities to provide an ideal learning environment. As a student, you can enjoy a range of recreational amenities and modern facilities, including lecture theatres, tutorial spaces, laboratories and more, to ensure you feel inspired to pursue your personal interests and career goals while studying.

Barry J Marshall Library

This library is UWA's hub for science students and researchers. Named after the University's Nobel Prize-winning professor, it has soundproofed study rooms, multimedia suites and a café on site.

Bayliss Building

This five-storey building is a thriving centre for world-class research and teaching with advanced labs on every level. It's the largest building on campus and features an impressive DNA double helix design.

Callaway Music Auditorium

Callaway Music Auditorium is a purpose-built performance space with wonderful acoustics.

The auditorium has raked seating that can be retracted in several iterations allowing for bespoke performance set-ups. It can also be fully retracted to accommodate full orchestral rehearsals. Built with professional stage lighting, hydraulic baffles (allowing for different acoustic treatments), two concert grand pianos (a Fazioli and an American Steinway) the Callaway auditorium offers a crisp sound for the audience.

Eileen Joyce Studio

The Eileen Joyce Studio houses the Conservatorium of Music's early keyboard collection, a range of instruments spanning the history of keyboard music and including clavichords, pipe and reed organs, a celeste and a variety of harpsichords and pianofortes. These instruments are part of an extensive collection of historic and ethnic musical instruments owned by the Conservatorium of Music.

The window-lined studio is used for teaching and performances, and offers views of the Somerville Auditorium.

New Fortune Theatre

The New Fortune Theatre is a uniquely faithful reconstruction of London's Fortune Playhouse, which was built in 1600 as a rival to Shakespeare's Globe Theatre.

Located in the heart of UWA's Arts building, the space has been a prime research and teaching tool for the School of Humanities since it opened with a production of *Hamlet* in 1964, the year of Shakespeare's 400th birthday.

As the only permanent reconstruction of the Fortune Playhouse in the world, the New Fortune Theatre is the only place in Australia – and one of only a few places worldwide – where you can experience Elizabethan plays as they were intended to be performed. Performances take place during the day and members of the audience look across at each other so they can see live emotions playing out, not just the action on stage. The space has also inspired new writing and contemporary performances, including works by celebrated playwright Dorothy Hewett.

Thespians aren't the only performers to tread the boards of the New Fortune Theatre – it's also home to UWA's famous peacocks and peahens. Come along on a quiet afternoon and you'll see them perching around the balustrades or calling from the stage.

Reid Library

With more than a million books, UWA's Reid Library is the largest academic library in Western Australia. Recent works doubled the number of collaborative student spaces and improved the facilities, technology and access available, as well as delivering a brand new café.



UWA student life



Student Guild

We have a vibrant student life with social activities on campus organised by the UWA Student Guild, the representative student organisation.

The UWA Student Guild has a reputation for being one of the most active in Australia and provides the following benefits for students:

- extra support for academic, financial or welfare matters affecting study
- discounts on campus, at shops, and for activities and services around Perth
- countless events including festivals, workshops, end-of-semester parties, networking opportunities, and the Guild Ball (formal dance) – not to mention more than 150 clubs and societies for you to join.

uwastudentguild.com

The Guild Village

The Guild Village is a hive of activity and houses shops, food outlets, a medical centre, bank ATMs and other useful student amenities. A regular marketplace is held every week and is the place to buy inexpensive, locally made clothes, jewellery and more.

UWA Sport

Immerse yourself in the opportunities available to you through sport and make your time at university unforgettable. Become a Fitness Centre member and:

- Get access to more than 60 group fitness classes a week, state-of-the-art equipment, multiple training zones, qualified instructors and free tickets to our popular masterclasses.
- Kickstart your day with a run on the treadmills, or take time out with a lunchtime yoga class.
- Practise your skills in squash, basketball, or tennis on one of our many courts.
- Join our interfaculty, intercollege or social competitions, or represent one of our 27 sport clubs.
- Sign up for our Recreate Short Courses. With everything from salsa to surfing, trips to Rottnest and self-defence classes, there really is something for everyone.

sport.uwa.edu.au

Accommodation

Enjoy the ultimate student experience and live only a few minutes away from campus.

UWA's five residential colleges are located directly opposite the University.

UWA also owns a group of student accommodation known as Crawley Village. This includes residential houses, units and studio apartments that are available to rent.

accommodation.uwa.edu.au

The Cultural Precinct

The Cultural Precinct is UWA's cultural hub, supporting the music, theatre, dance, literature and exhibition programs on campus. It also supports broader arts and cultural events that take place throughout the year, including collaborating with the Perth Festival.

culturalprecinct.uwa.edu.au

Volunteering

The Guild Volunteering office helps students find their ideal volunteering role. Many opportunities will be added to your degree transcript and you can choose from a range of fields.

Check out what current students get up to:



Taking you global

Do you love to travel? As a UWA student you have the opportunity to discover new cities and experience other cultures with the UWA Student Exchange Program. You can study at one of our partner universities across Asia, Europe or North or South America for one or two semesters while continuing to gain credit towards your degree.

study.uwa.edu.au/global



Study overseas for a semester or two, or choose a short-term program



More than 180 student exchange partner universities



Gain credit towards your degree while you study

Graduate School of Education highlights



Research puts mental health in the spotlight

Research into school students' mental health led by three UWA Graduate School of Education academics attracted national media attention in May 2019.

They found that high school students with a mental disorder were absent more than twice as much as other students.

"While absences from school are just one aspect of the impact poor mental health can have on students, these findings highlight the substantial impact that mental health disorders have on schooling."

To date, school attendance strategies have focused on identifying truancy and school refusal behaviour.

Expanding this focus to also consider the impact that anxiety and depressive disorders can have on attendance and participation in schooling is warranted."

Associate Professor David Lawrence



The Art of Teaching Science

UWA Professor of Science Education, Vaille Dawson, is the co-editor of a comprehensive guide to the teaching of secondary school science, *The Art of Teaching Science*. The third edition, recently published by Allen & Unwin Book Publishers, also features a chapter by Graduate School of Education lecturer Dr Gemma Scarparolo.



Recognising student achievements

The annual Graduate School of Education prize ceremony brings together students, staff, supporters and representatives from the education industry to celebrate outstanding achievements, with more than 30 prizes and scholarships presented.



Early Childhood industry booming


With growing numbers of children in early childhood care and new qualification requirements for early years centres, demand for qualified early childhood educators is on the rise.

UWA offers courses that help both aspiring and existing teachers to access employment opportunities in this field.

The **Master of Teaching (Early Childhood)** is designed for bachelor's degree graduates to enter the teaching profession.

The **Graduate Certificate in Early Childhood Education and Care** is designed for qualified primary teachers to add an early childhood specialisation to their skillset.

Keep up to date with the latest news from the Graduate School of Education

 @UWAeducation

Teaching teachers

Dr Gemma Scarparolo has been a lecturer in the UWA Graduate School of Education since 2018.

She holds a Bachelor of Education (Primary), Master of Education and PhD as well as a Mini Certificate of Gifted Education, and has taught across primary, secondary and tertiary contexts in WA.

She teaches in several units of the Master of Teaching and conducts research on inclusive education and inclusive teacher practices that cater for diversity (differentiation, gifted education and student voice).

"I truly believe that an effective, dedicated, knowledgeable, passionate and caring teacher can have a long-term positive impact on a child's life. An effective teacher can instil a love of learning in their students, and what a wonderful gift to give someone!"

One of the most satisfying aspects of my role at UWA is the opportunity and privilege to mentor students and be a part of their journey to becoming a teacher. I really enjoy getting to know my students over the course of their degree and maintaining contact after they have graduated when they share their stories, successes and challenges."





Choose your degree

We offer a range of options for postgraduate study. From professional and coursework degrees to independent research, you'll find a style of learning to match your needs.

Postgraduate professional degrees

A postgraduate professional degree is a master's or doctorate-level course, taken upon completion of a bachelor's degree (or equivalent). Upon successful completion, it qualifies you to enter your chosen profession.

Coursework degrees

Our postgraduate coursework degrees help you develop a thorough understanding of an area of study, diversify your educational background or obtain specific vocational training.

Coursework degrees include:

- Graduate certificates
- Graduate diplomas
- Master's by coursework
- Master's by coursework and dissertation
- Clinical doctorates
- Professional doctorates

Research degrees

Students keen to contribute knowledge and develop important skills or explore an area of personal interest may consider a research degree. These involve a project of supervised but independent enquiry at an advanced level, resulting in the submission of a research thesis (or equivalent) which is examined by experts in the field.

Research degrees include:

- Master's by thesis and coursework
- Master of Philosophy (MPhil)
- Professional doctorates
- Doctor of Philosophy (PhD)
- Master of Research

More information

Postgraduate applications

For information on application closing dates and how to lodge your application for postgraduate study, visit study.uwa.edu.au/postgraduate.

Higher degrees by research

For application forms visit study.uwa.edu.au/apply.

Research and scholarship enquiries

Graduate Research School

Tel: +61 8 6488 2807

Email: hdr-fable@uwa.edu.au

postgraduate.uwa.edu.au

Pathways to professional careers

A postgraduate professional degree is a master's or doctorate-level course taken upon completion of a bachelor's degree (or equivalent) that qualifies you to enter a profession.

There are two pathways to choose from.

Direct pathways

If you already have a professional career in mind, our Direct Pathways combine your undergraduate and postgraduate degrees, providing you with a clearer direction to your career of choice.

Direct Pathways in Education include:

- **Master of Teaching (Secondary)** – Minimum 92 ATAR
- **Master of Teaching (Primary)** – Minimum 92 ATAR
- **Master of Teaching (Early Childhood)** – Minimum 92 ATAR

A Direct Pathway gives you an assured place in one of our postgraduate professional courses and, in some cases, reduces the length of your postgraduate course.

Some Direct Pathways require a higher ATAR than our bachelor's degrees in Arts, Biomedical Science, Commerce and Science. To study one of our Direct Pathways, you'll need to meet the ATAR for the specific pathway and apply through TISC using its unique code. You will also need to continue to meet any ongoing requirements of the Direct Pathway for your course.

study.uwa.edu.au/direct-pathways

Graduate pathways

You can also enter a Master of Teaching using the graduate, or standard, pathway. This involves entering your flexible three-year undergraduate degree (ATAR of 80 required), achieving high grades, sitting the relevant tests and interview component, and then applying for your postgraduate degree at the end of the last year of your bachelor's degree.

study.uwa.edu.au/professional-pathways

Get job-ready

At UWA you'll gain valuable practical experience in partner schools and work with lecturers who integrate theory and practice across various areas. Through placements in schools, students experience teaching classes and complete their studies job-ready.

Esteemed reputation

UWA ranked within the world's top 75 universities for Education in the Times Higher Education World University Rankings by Subject 2019.

Direct Pathway Master of Teaching



Graduate Pathway Master of Teaching



¹ Students need to complete a bachelor's degree with a WAM of 60 and appropriate prerequisite units as advised by the Faculty, and submit a satisfactory personal statement.

Two degrees. Unlimited opportunities.

Prepare yourself for a rewarding career in education at UWA.

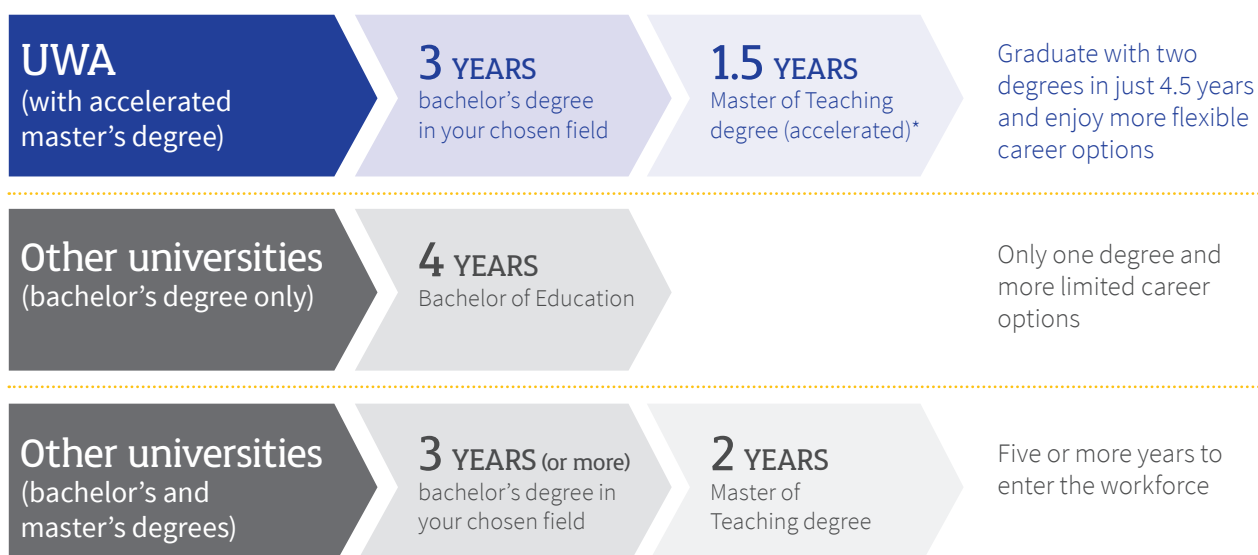
Our teaching pathway with an accelerated master's degree option allows you to graduate with two degrees, ready to enter the teaching profession, in as little as 4.5 years.

First, complete a bachelor's degree in which you can pursue your passions and develop deep expertise in your chosen areas relevant to teaching.

Then, enrol in a Master of Teaching to gain a qualification that enables you to teach in Australia and beyond.

At UWA, you can complete a Master of Teaching in three quarters of the standard time with our accelerated option.*

The combination of a bachelor's and a master's degree will ensure you have the specialist knowledge and skills to excel as a teacher, as well as the flexibility to explore other career options in your field.



* Criteria apply.

Master of Teaching (Early Childhood)

COURSE CODE
31520

INTAKE
SEMESTER 1,
SEMESTER 2

FULL-TIME
OR PART-TIME

DURATION
1.5-2*
YEARS
FULL-TIME

LOCATION
PERTH

Qualify as an early childhood educator and teach children from birth through to Year 2. Early childhood educators play a critical and foundational role in preparing young children for lifelong learning and participation in society.

Early childhood educators are pivotal in creating safe learning environments for holistic child development, nurturing creative and curious instincts and fostering positive attitudes to learning and problem solving. The course focuses on the education and preparation of early childhood educators with importance placed on the interface between play-based learning and intentional teaching. It's informed by comprehensive and contemporary understandings of childhood development and learning, with a special emphasis on the skills children need to develop literacy and numeracy. You'll be introduced to the breadth of learning required of early childhood educators including science, the humanities and social science, collaboration with parents and community, the arts, and health and physical education. You'll also have the

opportunity to practise your teaching skills in authentic settings throughout the course and in professional practice placements. In the final semester, you will reflect on and refine your teaching skills by conducting targeted teaching interventions with a strong focus on literacy, language or numeracy.

The course can be studied in an accelerated way that allows it to be completed in 18 months.

Admission requirements

To be considered for admission to this course an applicant must have:

- (a) (i) a bachelor's degree, or an equivalent qualification, as recognised by UWA; and
- (ii) the equivalent of a UWA weighted average mark of at least 60 per cent; and
- (iii) at least one year of the bachelor's degree relevant to one or more learning areas in the Early Childhood or Primary school curriculum for applicants who wish to major in Early Childhood or Primary Teaching respectively.
- (b) Applicants who have a bachelor's degree in education, or an equivalent qualification, as recognised by UWA, are not eligible for admission.
- (c) Before admission, international students must obtain a criminal record check from their country of origin or recent residence.

You are required to supply a personal statement with your application that addresses why you wish to pursue a career in teaching. See page 25 for more details.

Career opportunities

There is high demand for qualified early childhood specialists in this critical field. The Master of Teaching (Early Childhood) qualifies you to work in government and non-government schools, both in Australia and internationally, as well as in a range of other early childhood settings such as childcare centres.

Course structure

Core

Take all units:

- Perspectives in Aboriginal Education
- Children, Development and Pedagogy
- Professional Practice B
- Interventions for Learning
- Professional Practice A
- Technologies in the Curriculum
- Advanced Curriculum, Pedagogy and Assessment



COURSE ACCREDITATION
WITH AUSTRALIAN
CHILDREN'S EDUCATION
AND CARE QUALITY
AUTHORITY (ACECQA)



Early Childhood specialisation

Take all units:

- Integrated Studies: the Humanities and Social Sciences
- Teaching Mathematics in the Early Years
- Social Interaction and the Developing Child
- Language and Literacy in Early Childhood
- Developing and Managing the Infant and Early Childhood Learning Environment
- Integrated Studies: Science
- The Artistic and Expressive Child
- Physical Development, Movement and Health

Accreditation

The Master of Teaching (Early Childhood) is accredited by the Australian Children's Education, Care Quality Authority (ACECQA) and the Teacher Registration Board of Western Australia (TRBWA).

Further study options

With research experience and experience in the field, the Master of Education (Coursework) could be an area for further study. Refer to page 20 or study.uwa.edu.au.

study.uwa.edu.au/m/teaching-early-child

"I chose to study a Master of Teaching (Early Childhood) because I really like children and I am keen to get to know Australia's education system. My favourite thing about the course is the amazing teachers! They are so passionate, caring and supportive. I also enjoy group work, because we have such a small group and I've become really close with my peers."

UWA is such a beautiful university and the academic achievements are incredible. I love the area so I moved to Nedlands, and I am now studying and enjoying the environment – and the people are so friendly."

Lisa Zhang

* Standard duration is 2 years full-time. Course can be completed in 1.5 years with the accelerated option (criteria apply).

Master of Teaching (Primary)

COURSE CODE
31520

INTAKE
SEMESTER 1,
SEMESTER 2

FULL-TIME
OR PART-TIME

DURATION
1.5-2*
YEARS
FULL-TIME

LOCATION
PERTH

Become a professional in primary teaching and make a real difference. Primary teachers play a critical role in preparing students for lifelong learning. UWA offers a two-year Master of Teaching course that enables graduates to qualify as primary school teachers and fill this crucial role in our communities.

The course focuses on the education and preparation of primary school educators (Years 1–6). It's informed by comprehensive and contemporary understandings of childhood development and learning. A range of critical teacher competencies will be established and extended with special emphasis on the skills children need in literacy and numeracy. You'll be introduced to the breadth of learning required of primary children including science, the humanities and social science, the arts, and health and physical education. You'll also learn how to plan engaging learning programs using a range of resources and new technologies. There will be an opportunity to practise your teaching skills in authentic settings throughout the course and in professional practice placements. In the final

semester, you'll reflect on and refine your teaching skills by conducting targeted teaching interventions with a strong focus in language, literacy or numeracy.

The course can be studied in an accelerated offering that allows students to complete it in 18 months.

Admission requirements

To be considered for admission to this course an applicant must have:

- (a) (i) a bachelor's degree, or an equivalent qualification, as recognised by UWA; and
(ii) the equivalent of a UWA weighted average mark of at least 60 per cent; and
(iii) at least one year of the bachelor's degree relevant to one or more learning areas in the Early Childhood or Primary school curriculum for applicants who wish to major in Early Childhood or Primary Teaching respectively.
- (b) Applicants who have a bachelor's degree in education, or an equivalent qualification, as recognised by UWA, are not eligible for admission.
- (c) Before admission, international students must obtain a criminal record check from their country of origin or recent residence.

You are required to submit a satisfactory personal statement that addresses several non-academic criteria (using the template available on our website) with your application. See page 25 for more details.

Career opportunities

There is high demand for qualified primary school specialists in this critical field. The Master of Teaching (Primary) qualifies you to teach in primary schools.

Course structure

Core

Take all units:

- Perspectives in Aboriginal Education
- Children, Development and Pedagogy
- Professional Practice B
- Interventions for Learning
- Professional Practice A
- Technologies in the Curriculum
- Advanced Curriculum, Pedagogy and Assessment

Primary teaching specialisation

Take all units:

- Integrated Studies: the Humanities and Social Sciences
- Teaching Mathematics in the Early Years
- Language and Literacy in Early Childhood



COURSE
ACCREDITATION
WITH TEACHER
REGISTRATION
BOARD OF WESTERN
AUSTRALIA (TRBWA)



- Teaching Mathematics in Middle and Upper Primary
- Integrated Studies: Science
- Literacy Across the Curriculum
- The Artistic and Expressive Child
- Physical Development, Movement and Health

Accreditation

The Master of Teaching (Primary) is accredited by the Teacher Registration Board of Western Australia (TRBWA). Graduates are eligible to register with TRBWA and this entitles them to be legally employed as a teacher in a Western Australian school.

Further study options

With research experience and experience in the field, the Master of Education (Coursework) could be an area for further study. Refer to page 20 or study.uwa.edu.au.

study.uwa.edu.au/m/teaching-primary

"I chose to enrol in the Master of Teaching (Primary) course because through my undergraduate degree in sport science I was able to get experience teaching at schools and found it to be an enjoyable and rewarding career pathway. The thing I have enjoyed most about my course is my practicum placements, where I have been able to go out and put what I have learnt into action in a classroom. This has provided me with many enjoyable experiences and has further developed my skills as an educational practitioner."

"My favourite aspect of studying at UWA is that everyone is so friendly and ready to help. The facilities are brilliant and you have everything you need in your studies."

"I hope to finish my course and progress onto becoming a successful primary school teacher who impacts many of his students."

Travis Smith

* Standard duration is 2 years full-time. Course can be completed in 1.5 years with the accelerated option (criteria apply).

Master of Teaching (Secondary)

COURSE CODE
32550

INTAKE
SEMESTER 1,
SEMESTER 2

FULL-TIME
OR PART-TIME

DURATION
1.5-2*
YEARS
FULL-TIME

LOCATION
PERTH

This course prepares university graduates for a rewarding career in teaching.

This course aims to graduate highly skilled professionals who have the key practical skills required for effective secondary teaching, informed by current theory and research.

Candidates must have a degree with a major in the subject that they want to teach and which can be found in the school curriculum. As there is a severe shortage of secondary English, Mathematics and Physics teachers in Australian schools, we particularly encourage students with qualifications in those areas to consider a career in teaching. All students who enter the course will be required to meet the standard of a National Literacy and Numeracy Test in order to graduate.

The course can be studied in an accelerated offering allowing students to complete the course in 18 months.

Admission requirements

To be considered for admission to this course an applicant must have:

- (a) (i) a bachelor's degree, or an equivalent qualification, as recognised by UWA; and
(ii) a major relevant to secondary teaching curriculum majors offered by UWA; and
(iii) the equivalent of a UWA weighted average mark of at least 60 per cent.
- (b) Applicants who have a bachelor's degree in education, or an equivalent qualification, as recognised by UWA, are not eligible for admission.
- (c) Before admission, international students must obtain a criminal record check from their country of origin or recent residence.

You are required to supply a personal statement with your application that addresses why you wish to pursue a career in teaching.

See page 25 for more details.

Career opportunities

There is high demand for qualified secondary teachers. As a graduate of this course, you'll be able to work in government and independent schools, both nationally and internationally.

Course structure

Core

Take all units:

- Literacy and Numeracy Across the Curriculum
- Perspectives in Aboriginal Education
- Development, Teaching and Learning: Theory and Practice
- Professional Practice A Secondary
- Professional Practice B Secondary
- Differentiating the Curriculum
- Interventions for Learning in Years 7-12
- Teaching Contexts
- Embedding ICTs Across the Curriculum

Options

You will also take curriculum units for your chosen major, minor and/or area of interest, plus electives.

Curriculum units are available in:

- Art
- Career Development
- English
- Health and Physical Education
- Humanities and Social Sciences
- Information and Communication Technology
- Languages Other Than English
- Mathematics
- Music
- Science
- Special Education

For additional course structure details, visit handbooks.uwa.edu.au.

COURSE
ACCREDITATION
WITH TEACHER
REGISTRATION
BOARD OF WESTERN
AUSTRALIA (TRBWA)



Accreditation

The Master of Teaching (Secondary) is accredited by the Teacher Registration Board of Western Australia (TRBWA). Graduates are eligible to register with TRBWA and this entitles them to be legally employed as a teacher in a Western Australian school.

Further study options

With research experience and experience in the field, the Master of Education (Coursework) could be an area for further study. Refer to page 20 or study.uwa.edu.au.

study.uwa.edu.au/m/teaching-secondary

"The highlights of this course were the fantastic in-school practicums and the quality of lecturers provided by the Graduate School of Education. This allowed me to feel supported whilst out in schools and during my studies. I was also very privileged to be a recipient of the Christchurch Grammar Initial Teacher Education Scholarship which afforded me the opportunity to spend additional practicum time in schools learning from passionate and motivated educators.

I am currently working as Humanities and Social Sciences teacher at a private girls' school and I absolutely love my job. Teaching is such a varied profession and no day is ever the same.

I believe studying the Master of Teaching at UWA prepared me very well for my career as I was able to gain theoretical background knowledge and practical experience in teaching prior to entering the workforce. This made me feel confident when entering the classroom on my own as a qualified teacher."

Sarah Sciarrone

* Standard duration is 2 years full-time. Course can be completed in 1.5 years with the accelerated option (criteria apply).

Master of Education (Coursework and Dissertation)

COURSE CODE
30580

INTAKE
SEMESTER 1,
SEMESTER 2

FULL-TIME
OR PART-TIME

DURATION
1
YEAR

LOCATION
**PERTH &
SINGAPORE**

Gain an advanced understanding of the field of education, including research-based learning and intellectual scholarship in education.

This course is designed for professionals in education who wish to expand their expertise and career possibilities. This course will introduce you to theory as well as national and international educational practices. You'll have the opportunity to connect these considerations with your own experiences. Through disciplined dialogue and the sharing of ideas and information, you'll broaden your knowledge, improve your skills and develop your professional agency. The course also presents an opportunity to select an area of specialisation. In addition, a research component (comprising at least 25 per cent of your studies) provides an opportunity to develop research skills as a basis for further professional enquiry. The course delivery arrangements are flexible and particularly suited to the requirements of people in full-time careers.

Admission requirements

To be considered for admission to this course an applicant must have:

- (a) (i) bachelor's degree, or an equivalent qualification, as recognised by UWA; and
- (ii) a relevant postgraduate degree requiring at least one year of full-time study, or an equivalent qualification, as recognised by UWA; and
- (iii) at least two years of relevant full-time professional experience or evidence of adequate research preparation, as recognised by UWA.

For alternative entry options visit study.uwa.edu.au/courses/master-of-education#admission-requirements.

Career opportunities

This course will pave the way for you to move into various leadership positions within schools as well as in other educational organisations.

Course structure

Core

Take all units:

- Master's Dissertation
- Approaches to Research

For additional course structure details, visit handbooks.uwa.edu.au.

study.uwa.edu.au/mr/education

"I chose the Master of Education to enhance my skills in the ever-changing world of education. It allows me to keep up with current research and learn practical strategies to implement in my classroom. I can transfer knowledge I have obtained to further my teaching and leadership capability at my school."

UWA has a world-famous reputation for providing a comprehensive and well-rounded education. UWA's Master of Education course is interesting and the units are engaging and relevant. I also like the fact that you can select some of your own units of interest if the current structure does not suit your needs and requirements. UWA offers flexible learning options and I was able to study while still maintaining full-time employment and a life!"

Rachael Robertson

Master of Educational Leadership (Coursework and Dissertation)

COURSE CODE
30520

INTAKE
SEMESTER 1,
SEMESTER 2

FULL-TIME
OR PART-TIME

DURATION
1
YEAR

LOCATION
PERTH

Gain a sharper understanding of contemporary educational leadership and an enhanced sense of agency as a leader.

This course is aimed at educators who are either current or aspiring leaders in their organisations. You are introduced to theory in national and international educational practices, and encouraged to connect these considerations with your own experiences through the sharing of ideas and information. The course provides comprehensive preparation in conceptualising, conducting and reporting research, especially as applied to the substantive area of educational leadership.

Admission requirements

To be considered for admission to this course an applicant must have:

- (a) (i) a bachelor's degree, or an equivalent qualification, as recognised by UWA; and
 - (ii) a relevant postgraduate degree requiring at least one year of full-time study, or an equivalent qualification, as recognised by UWA; and
 - (iii) at least two years of relevant full-time professional experience or evidence of adequate research preparation, as recognised by UWA; or
- (b) (i) a Bachelor of Education, or an equivalent qualification, as recognised by UWA; and
 - (ii) at least two years of relevant full-time professional experience or

evidence of adequate research preparation, as recognised by UWA; or

- (c) (i) a degree requiring at least four years of full-time study; and
 - (ii) at least two years of relevant full-time professional experience; and
 - (iii) evidence of adequate research preparation, as recognised by UWA; or
- (d) a graduate diploma that articulates with the Master of Educational Leadership.

Career opportunities

This course will pave the way for you to move into various leadership positions within schools, such as Associate Principal or Principal.

Course structure

Core

Take all units:

- Human Resource Development in Education
- Leadership for Learning
- Master's Dissertation
- Approaches to Research
- Education Policy Trends: Global to Local

For additional course structure details, visit handbooks.uwa.edu.au.

uwa.edu.au/study/courses/master-of-educational-leadership---coursework

"I decided I wanted to become a school principal but knew I required my Master of Educational Leadership to have the best chance. I contacted UWA and the course coordinator was most helpful and said it was possible to complete but it would be hard work given I had a full-time leadership job as Head of Senior School at PLC, Perth. However, anything is possible when you put your mind to it and the lectures were very stimulating and I met wonderful leaders from other schools.

Within the same year, I applied for principal roles and was lucky enough to be appointed the Principal at Geraldton Grammar School. I am convinced studying at UWA and having such supportive lecturers has not only helped me get my job but is helping me lead my school."

Neesha Flint

Graduate Diploma in School Psychology

COURSE CODE
30360

INTAKE
SEMESTER 1

FULL-TIME
OR PART-TIME

DURATION
1
YEAR

LOCATION
PERTH

Become a school psychologist with the Graduate Diploma in School Psychology. This pre-service course is intended to prepare psychology graduates for employment as school psychologists within the government and non-government sectors.

The course will expose students to a range of relevant theories, processes and practices appropriate for the provision of psychological services to schools, teachers and students. This course introduces students to psychological and educational assessment, counselling, and clinical issues that address an understanding of many childhood disorders and difficulties. At the conclusion of the course, you'll be able to demonstrate competency in psychological assessment, counselling and behaviour management as well as understanding the management options for clinical issues.

This course consists of eight compulsory units:

- Development, Teaching and Learning: Theory and Practice
- Learning Difficulties
- School Psychology I
- School Psychology II
- School Psychology Professional Practice I
- School Psychology Professional Practice II
- Special Education Curriculum I
- Understanding and Managing Disruptive Behaviour Disorders

Applicants should note that this is not an APAC-accredited course and that the four-year pathway to becoming a psychologist will cease in mid-2020. It is strongly recommended that those wishing to become a school psychologist do so through a five-year accredited course.

Admission requirements

To be considered for admission to this course an applicant must have:

- (a) a qualification in psychology, as accredited by the Australian Health Practitioner Regulation Agency, comprising:
 - (i) a first or upper second class honours; or
 - (ii) a four-year Bachelor of Psychology; or
 - (iii) a Graduate Diploma in Psychology, or an equivalent qualification, as recognised by UWA; and
- (b) the equivalent of a UWA weighted average mark of at least 70 per cent in their fourth year of psychology study.

Applicants must be eligible for registration as a psychologist at application.

study.uwa.edu.au/gd/schoolpsych

Doctor of Education

COURSE CODE
30810

INTAKE
SEMESTER 1

FULL-TIME
OR PART-TIME

DURATION
3
YEARS

LOCATION
**PERTH &
SINGAPORE**

This professional doctorate program is designed for research-orientated individuals, working in educational roles, who seek to make a contribution to knowledge in the context of professional practice.

Participants will develop substantial content knowledge in cognate areas related to the kinds of career positions and pathways that they might pursue, along with substantial knowledge of research principles and methods applicable to the field of learning. You'll demonstrate intellectual discipline to think critically, evaluate existing knowledge and ideas, undertake systematic investigation, and reflect on theory and practice to contribute to professional knowledge and practice. Research studies conducted for the EdD can make a contribution to policy, management and professional practice in education. There is only one intake of students at the start of the year.

Admission requirements

To be considered for admission to this course an applicant must have:

- (a) (i) a bachelor's degree of this University in a relevant field with first or upper second class honours, or equivalent as recognised by the Faculty; or
- (ii) a master's degree of this University in a relevant field with an average of at least 70 per cent, and adequate research preparation as prescribed in University Policy, or equivalent as recognised by the Faculty; and
- (b) the equivalent of at least two years' full-time professional educational experience.
- (c) A student who has completed the Master of Education Research Methods with an average mark of 65 per cent and with a mark of at least 65 per cent in EDUC9973 Research Paradigms: Doctoral Project Report is permitted to proceed to the Doctoral Thesis unit.

This course is also available to be studied offshore in Singapore, subject to obtaining a cohort.

study.uwa.edu.au/d/education

"My supervisors are the experts in my field. They provide me with clear direction and guidance as well as the professional support I need with my thesis."

Esti Andriani, EdD graduate

Graduate Certificate in Early Childhood Education and Care

study.uwa.edu.au/d/early-child-edu-care

Course code: 32330

Course intake: Semester 2

Study options: Part-time

Course duration: 1 year

Course location: Perth

COURSE DESCRIPTION:

The Graduate Certificate in Early Childhood Education and Care consists of three academic units and a practical placement in a partner preschool where children are aged 0–6 years. The course builds on your existing experience as a primary teacher to cultivate skills that contribute to quality environments for children's learning and development. Once complete, you will be officially qualified to teach in Early Childhood Education and Care settings. Early childhood educators play a critical and foundational role in preparing young children for lifelong learning and participation in society. They are pivotal in creating safe learning environments for holistic child development, nurturing creative and curious instincts and fostering positive attitudes to learning and problem solving.

Admission requirements:

To be considered for admission to this course an applicant must have:

- (a) a bachelor degree in Primary Education, or an equivalent qualification, as recognised by UWA; and
- (b) the equivalent of a UWA weighted average mark of at least 60 percent.

Graduate Certificate in Studies

study.uwa.edu.au/gc/studies

Course code: 00200

Course intake: Semester 1, Semester 2

Study options: Full-time and Part-time

Course duration: 0.5 years

Course location: Perth

COURSE DESCRIPTION:

Designed for graduates wishing to pursue their diverse personal, academic and/or professional interests through postgraduate study, this articulates with the Master of Studies and allows students to complete four units (24 points) at postgraduate level from any discipline. It is an opportunity to study different areas of personal or professional interest before you consider a Master of Studies.

Admission requirements:

To be considered for admission to this course an applicant must have:

- (c) a bachelor's degree, or an equivalent qualification, as recognised by UWA.

Graduate Certificate in Tertiary Teaching

study.uwa.edu.au/gc/tertiary-teaching

Course code: 30250

Course intake: Semester 1, Semester 2 (mid-year intake, part-time only)

Study options: Part-time only

Course duration: 1 year

Course location: Perth

COURSE DESCRIPTION:

Advance your career in tertiary education. Responding to national and international trends in quality teaching, this course has been designed to assist tertiary educators working in higher education with their teaching and mentoring skills. Units are taught by internationally recognised educators and are designed to equip you with the necessary skills to maximise your students' learning.

Admission requirements:

To be considered for admission to this course an applicant must have:

- (a) a bachelor's degree, or an equivalent qualification, as recognised by UWA; and
- (b) current employment in tertiary teaching.

Master of Education – Thesis and Coursework

study.uwa.edu.au/m/education

Course Code: 31700

Starting dates: Semester 1, Semester 2

Study options: Full-time and Part-time

Course duration: 1.5 years

Location: Perth

COURSE DESCRIPTION:

This course is suited to leaders and professionals in education, health, justice, government administration and management who want to undertake postgraduate study.

This course introduces participants to theory as well as national and international educational practices that can be linked with their own experiences and, through dialogue and the sharing of ideas, enhance their knowledge and skills. It also provides participants with comprehensive preparation in conceptualising, conducting and reporting research in education. Participants are encouraged to pursue coursework and research in their own particular area of interest.

The delivery arrangements for this research-based course are flexible and are aligned with the needs of those in full-time professional or management careers.

Admission requirements:

- (a)
 - (i) a bachelor's degree of this University; and
 - (ii) completed a postgraduate course in education requiring at least one year of full-time study; and
 - (iii) either two years' full-time relevant professional experience or adequate research preparation demonstrated to the satisfaction of the Faculty.

For additional entry requirements refer to study.uwa.edu.au/courses/master-of-education--thesis--coursework#admission-requirements.

Master of Educational Leadership – Thesis and Coursework

study.uwa.edu.au/mr/education-leadership

Course code: 31650

Course intake: Semester 1, Semester 2

Study options: Full-time and Part-time

Course duration: 1.5 years

Course location: Perth

COURSE DESCRIPTION:

This course is suited to educators (government and non-government schools, universities and TAFE) who are leading or aspiring to be leaders in their organisations.

The course introduces participants to theory as well as national and international educational practices. Participants can then connect these considerations with their own experiences and, through dialogue and the sharing of ideas and information, broaden their knowledge and enhance their capabilities.

The course also provides participants with comprehensive preparation in conceptualising, conducting and reporting research, especially as applied to the substantive area of educational leadership.

Admission requirements:

- (a)
 - (i) a bachelor's degree of this University; and a postgraduate course in education requiring at least one year of full-time study; and
 - (ii) either two years' full-time relevant professional experience or adequate research preparation demonstrated to the satisfaction of the Faculty; or
- (b)
 - (i) the Bachelor of Education of this University; and
 - (ii) either two years' full-time relevant professional experience or adequate research preparation demonstrated to the satisfaction of the Faculty.

For additional entry requirements refer to study.uwa.edu.au/courses/master-of-educational-leadership--thesis--coursework#admission-requirements

Master of Studies

study.uwa.edu.au/m/studies

Course code: 00500

Course intake: Semester 1, Semester 2

Study options: Full-time and Part-time

Course duration: 1.5-2 years

Course location: Perth

COURSE DESCRIPTION:

Create your own course with the Master of Studies.

This course is designed for graduates who have interdisciplinary personal, academic and/or professional interests and who want to pursue those interests through postgraduate study. The course provides you with the opportunity to select a unique combination of postgraduate units to achieve your academic, professional and/or personal goals. You are able to enrol in a broad range of postgraduate units offered by different schools and faculties across the University, dependant on your previous study and professional experience. After completing four units (24 points) across the disciplines, you then nominate an area in which you would like to gain a depth of knowledge, in which you take a minimum of four units (24 points). These may include a substantial research-based project, capstone experience and/or piece of scholarship.

Admission requirements:

To be considered for admission to this course an applicant must have:

- (a) a bachelor's degree, or an equivalent qualification, as recognised by UWA.

Additional entry requirements

Master of Teaching

- (1) To be considered for admission to this course an applicant must have:
 - (a) a bachelor's degree, or an equivalent qualification, as recognised by UWA; and
 - (b) a major relevant to secondary teaching curriculum majors offered by UWA; and
 - (c) at least one year of the bachelor's degree relevant to one or more learning areas in the Early Childhood or Primary curriculum for applicants who wish to major in Early Childhood or Primary Teaching respectively.
- (2) Applicants who have an Australian teaching qualification or equivalent as recognised by UWA are not normally eligible for admission.
- (3) Before admission, international students must obtain a criminal record check from their country of origin or recent residence.

Ranking and selection

Where relevant, admission will be awarded to the highest ranked applicants or applicants selected based on:

- (a) a satisfactory personal statement, as recognised by UWA; and
- (b) an interview when requested; and
- (c) applicants undertaking the Music major may be required to do an audition.

Personal statement

To apply for this course, you will need to write a personal statement demonstrating that you have the necessary personal characteristics to become a successful educator. Download the template here:

study.uwa.edu.au/courses/master-of-teaching-secondary#admission-requirements

How to apply for a postgraduate course

Applicants are expected to have completed an undergraduate degree at an approved university and undertaken adequate preparation for the degree for which they are applying.



Coursework

1

Apply online

Submit an online application at **study.uwa.edu.au/apply** that includes all necessary documentation specified in the admission requirements of your course. For admission requirements and application dates, visit **study.uwa.edu.au/how-to-apply**.



2

Accept your offer

If successful, and you receive an offer for postgraduate study at UWA, you can respond by following the instructions on your offer letter.



3

Start your UWA postgrad journey

Unistart is your official guide to starting postgraduate study at UWA. Follow the steps at **unistart.uwa.edu.au/postgrad** to plan for pre-enrolment, enrolment and orientation.





Research

1

Contact your Higher Degree by Research support team in the relevant faculty

Faculty of Arts, Business, Law and Education
hdr-fable@uwa.edu.au

Read the profiles of research leaders who may be potential supervisors at research.uwa.edu.au/fellows.

Prepare your research proposal: Prepare a brief outline (maximum 250 words) of your proposed area of study to discuss with a prospective supervisor.

i

Discuss your resources: Find out what resources are available to you as a postgraduate research student, as these vary depending on the school in which you enrol.

Be informed: There is useful information online for future research students, including how to prepare a research proposal. Visit study.uwa.edu.au/research/becoming-a-research-student.

2

Submit your application

Submit an application to the respective HDR support team in your faculty. This should include:

- a completed research application form available at study.uwa.edu.au/apply
- all certified documents as listed on the application form
- a research proposal

Successful applicants will be sent an offer package electronically, including a letter of offer/ authority to enrol, and acceptance documents. You should allow six to eight weeks to process.



Scholarships

UWA is proud to offer a range of scholarships and prizes annually to support students from all walks of life. The University has a long tradition of recognising and rewarding excellence within our community.

We have scholarships under the following categories:

- Prestigious scholarships
- Academic excellence scholarships
- Sporting excellence scholarships
- Residential scholarships
- Regional and remote scholarships
- Equity scholarships
- Indigenous Australian and Torres Strait Islander scholarships

Eligibility to apply

Eligibility varies depending on the scholarship being sought, but our range of scholarships provides numerous opportunities to apply. Take a look at the conditions of the scholarship you intend to apply for to view your eligibility.

How to apply

Scholarships that are open for application may be accessed through our online application portal. You can apply for as many scholarships as you wish. If your application is successful, you may only hold one scholarship at a time, dependent on the scholarship conditions at the time of application and award.

To access up-to-date information on our full range of scholarships, visit scholarships.uwa.edu.au/futurestudents or get in touch through askUWA.

Scholarships in Education

Scholarships available to assist students pursuing a Master of Teaching include the:

- All Saints College Scholarship (\$5000 to assist and encourage high-achieving students to pursue a Master of Teaching)
- Amy Beatrice Hodgson Memorial Scholarship (\$2500 to encourage and assist an eligible applicant to commence a Master of Teaching and to undertake a regional or remote placement)
- CTW Dr June Jones Masters Scholarship in Education (\$5000 to encourage and assist a meritorious female student who is experiencing educational disadvantage to undertake a Master of Teaching)

These are just some examples. Search the full range of scholarships online.

Prizes

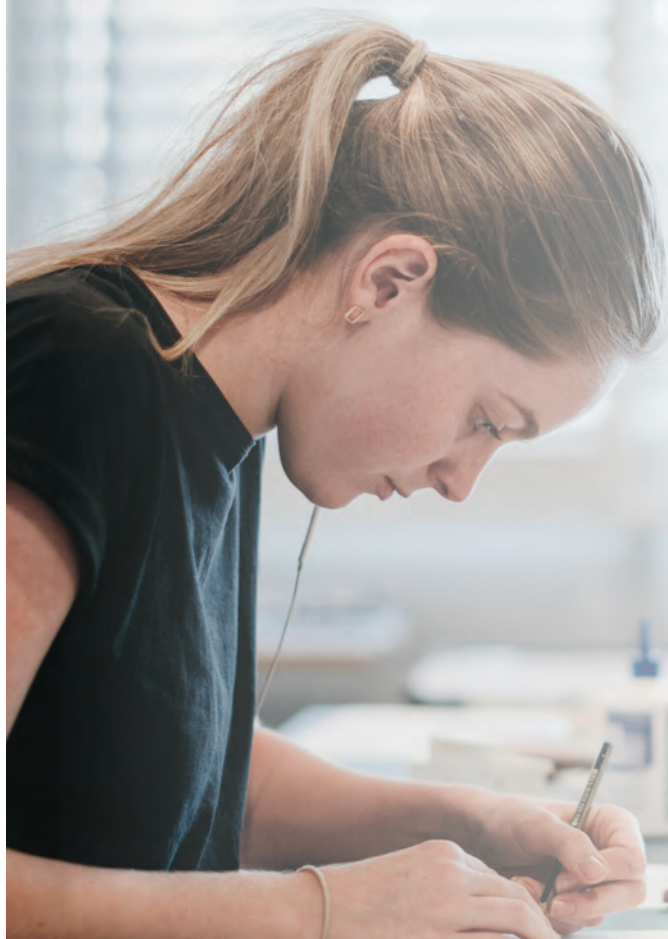
In recognition of outstanding academic achievement, UWA awards prizes annually. These prizes are offered by the different areas of the University and are presented to recipients at an awards ceremony held by the relevant faculty.

Recipients are nominated by the relevant faculty based on results achieved in their previous academic year.

Please note, unless specified in the prize conditions, students do not need to apply for prizes.

To see the different prizes within each area, take a look at what's offered at web.uwa.edu.au/study/prizes.

If you're applying to UWA through an alternative pathway, enquire about scholarship opportunities through askUWA.



Postgraduate fees

Fees for postgraduate study are determined by the nature of the course in which you enrol. Different types of degrees are classified under different types of fee structures or loan schemes.

Coursework degrees

Postgraduate fee-paying places (PF-P)

A postgraduate degree is classified as coursework when the dissertation component, if any, is less than two-thirds of the total course. Tuition fees are applicable to a large number of postgraduate coursework programs, and places in these courses are known as postgraduate fee-paying places. A deferred payment loan scheme called FEE-HELP is available under the Australian Government's Higher Education Loan Program. FEE-HELP assists eligible students who enrol in postgraduate fee-paying courses to pay part or all of their tuition fees.

Commonwealth supported place (CSP)

Some postgraduate coursework degrees have Commonwealth supported places, meaning the tuition fees for the course are subsidised by the Australian Government so students are only required to pay 'student contribution' amounts for their units of study. Students offered a CSP in a postgraduate degree may be eligible for HECS-HELP. HECS-HELP is an Australian Government loan program to help eligible students in CSPs to defer payment of their student contributions. Comprehensive information regarding eligibility for postgraduate coursework loan programs can be found by visiting studyassist.gov.au.

Australian Government Research Training Program (RTP) for research degrees

A postgraduate degree is classified as a Higher Degree by Research (HDR) if the research component is at least two-thirds of the course. At UWA, Australian citizens and permanent residents, and New Zealand citizens, are exempt from paying tuition fees for HDRs under the Research Training Program (RTP). The RTP is a dedicated pool of funding provided by the Australian Government to support students undertaking research doctorate and master's by research degrees. Domestic RTP Fees Offset Scholarships provide exemption from payment of tuition fees for up to four years' full-time equivalent study for a doctorate by research and two years' full-time equivalent study for a master's by research degree. Assessment of eligibility for an RTP Domestic Fees Offset Scholarship and allocation occurs automatically in conjunction with an application for admission.

Combined coursework and research degrees

Candidates in some combined courses may be required to pay fees or organise a loan for the coursework component of their combined degree, even though the research component is covered by the RTP for eligible students. If in doubt about your eligibility under the scheme, contact the Graduate Research School at pghelp@postgraduate.uwa.edu.au or visit postgraduate.uwa.edu.au.

Student Services and Amenities Fee (SSAF)

The compulsory Student Services and Amenities Fee is payable by all students enrolled at UWA. Income from this fee funds the development and provision of educational, recreational, social and sporting facilities and activities for the direct benefit of all UWA students. Research degree candidates who have been approved to undertake their research overseas may apply to have their fee waived. Applications are made directly to the Graduate Research School. For more information about the SSAF visit student.uwa.edu.au/course/fees/ssaf.

Living allowances

Some courses have been approved by the Department of Social Services for Student Support Payments. Eligible students can receive one of Youth Allowance, Austudy or the Pensioner Education Supplement. Further information can be found at dss.gov.au/our-responsibilities/families-and-children/programmes-services/student-payments.

Calculating your course fees

For comprehensive information regarding the tuition or student contribution fees applicable to your course of interest, visit fees.uwa.edu.au.

Supporting you

Your first few days at university can be overwhelming, from making new friends and managing your resources, to getting help with your course or even just finding the right lecture room. We offer a range of student services dedicated to helping you get your studies off to the best start and supporting you throughout your journey with us.

Before university begins, learn about accepting your offer and going to orientation with UniStart. You'll find useful dates, events and locations of services you may need in your first few days. Our transition advisers are also on hand to help out with any issues. They can offer advice from enrolling to fixing clashes in your timetable.

transition.uwa.edu.au

STUDYSmarter is a free academic advice and support service offering support and resources for all undergraduate and postgraduate students at UWA. The team can help you develop the writing, research, English language, maths and stats skills you need to excel in your university studies. Get personalised advice at WRITESmart Drop-in and (ma+hs) Smart Drop-in.

studysmarter.uwa.edu.au

If you have a disability or a medical or mental health condition that affects your ability to study, the UniAccess team can assist you according to your individual needs. Services include alternative exam arrangements, establishing reasonable adjustments that you may need due to your medical condition/disability, library resource rooms, and individual assistance with orientation and access. All services are free.

uniaccess.uwa.edu.au

Counselling is available for students with academic or personal concerns. Psychologists with the service understand the issues faced by university students and offer free confidential counselling. Seeking assistance earlier can help reduce the likelihood of your concerns having an impact on your academic success and overall sense of wellbeing.

counselling.uwa.edu.au

Located in the Guild Village, the University Medical Centre offers a full range of high-quality, confidential healthcare services and support to current UWA students and staff.

uwa.edu.au/medical-centre

There are Christian and Muslim Chaplains who are committed to supporting you in the multifaith environment of UWA. They are available to help staff and students connect with what they need, whether religious or not.

spirituallife.uwa.edu.au

The search for accommodation can often be confusing and overwhelming. The UWA Accommodation Office provides a variety of options, as well as advice and support for students looking to live on or off campus.

accommodation.uwa.edu.au

For students with family commitments, UWA Child Care Services offer an Early Learning Centre for children aged six weeks to five years, plus After School and Vacation Care for primary school-aged children.

childcare.uwa.edu.au

Join us on campus

One of the best ways to find out about studying at UWA is to take part in the events we offer future students.

study.uwa.edu.au/events



Contact us

Graduate School of Education

education.uwa.edu.au/contact

Enquiries

Coursework degrees Tel: +61 8 6488 3714
 Email: **ask.uwa.edu.au**
 gse@uwa.edu.au

Research degrees Tel: +61 8 6488 8168
 Email: **hdr-fable@uwa.edu.au**

Coursework
scholarships Tel: +61 8 6488 3736
 Email: **ask.uwa.edu.au**

Research
scholarships Tel: +61 8 6488 2807
 Email: **researchschols@uwa.edu.au**

Course index

Postgraduate courses

Master of Teaching (Early Childhood)	14
Master of Teaching (Primary)	16
Master of Teaching (Secondary)	18
Master of Education	20
Master of Educational Leadership	21
Graduate Diploma in School Psychology	22
Doctor of Education	23
Graduate Certificate in Early Childhood Education and Care	24
Graduate Certificate in Studies	24
Graduate Certificate in Tertiary Teaching	24
Master of Education – Thesis and Coursework	24
Master of Educational Leadership – Thesis and Coursework	24
Master of Studies	25



THE UNIVERSITY OF
**WESTERN
AUSTRALIA**



Phone

Speak to a Future Students
Adviser 8.30am–5pm (WST)
Monday to Friday
131 UWA (131 892)



Email

Email your
enquiries to:
future-students@uwa.edu.au



askUWA

Find answers to our
FAQs anytime
ask.uwa.edu.au



Web chat

Chat with a Future Students
Adviser, 2.30–4.30pm (WST)
Monday – Friday



universitywa



uwanews



universitywa



universitywa



uwastudents