



THE UNIVERSITY OF
WESTERN
AUSTRALIA

UWA Study Centre @ ZJU

西澳大学学习中心@浙江大学



浙江大学
ZHEJIANG UNIVERSITY



为何选择西澳大学学习中心？

Why UWA Study Centre?

西澳大学希望向在 COVID-19 边境限制期间，为无法返回珀斯学习的西澳大学中国学生们提供更多支持以及学术帮助。

UWA would like to provide additional support to its Chinese students who are unable to return to Perth while COVID-19 border restrictions are in place.

- 使用浙江大学校内设施
Use the campus facilities at Zhejiang University
- 与同样来自西澳大学的同学们一起学习和生活
Live and study with other UWA students
- 参与学生社团以及社团活动
Join the UWA student committee and activities

为何选择西澳大学学习中心?

Why UWA Study Centre?

- 西澳大学的学生可以使用浙江大学华家池校区及西溪校区
UWA students can use Zhejiang University HuaJiaChi and XiXi campus.
- 浙江大学华家池校区将提供**UWA**学生专用教室
Dedicated UWA classrooms will be provided at HuaJiaChi campus.
- 将有浙江大学的教师们为学生提供学术帮助
Zhejiang University will provide academic support to UWA students.
- 西澳大学学习中心将举办各类学生活动
Student activities and events will be arranged by UWA Study Centre.

杭州

HANGZHOU

杭州是浙江省的省会

Hangzhou is the capital city of Zhejiang Province.

位于中国东南沿海、浙江省北部，钱塘江下游

Located on the southeast coast of China, the north of Zhejiang Province and the lower reaches of the Qiantang River.

全国十大城市之一

One of the tenth largest cities in the China.

并被《福布斯》多次评为中国大陆最佳商业城市

Has been rated as the best commercial city in mainland China by Forbes multiple times.

八大古都之一，其盛名又以西湖为首

One of the eight ancient capitals, its reputation is led by West Lake.

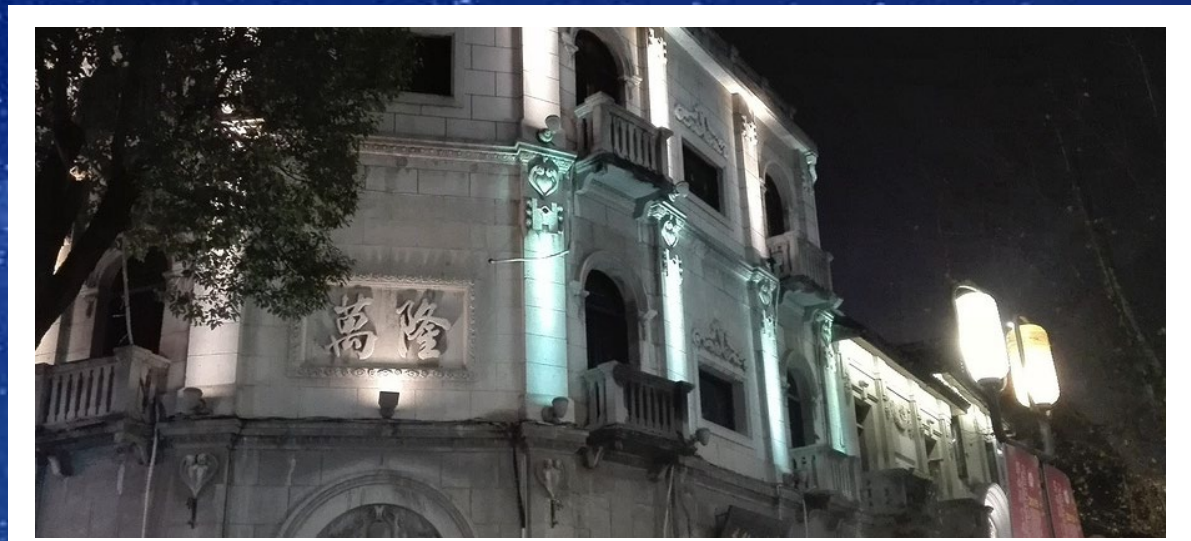
杭州 西湖 / Hangzhou West Lake





灵隱寺 / Lingyin Temple

河坊街 / Hefang Street Scenic Area





西溪国家湿地公园

Xixi National Wetland Park

浙江大学

ZHEJIANG UNIVERSITY

- 创立于1897
Founded in 1897.
- 全中国排名前三的院校之一 (ARWU 2019,2020,2021)
One of the top three universities in China (ARWU 2019,2020,2021).
- 第一批国家“985”“211”“双一流”项目的大学
One of the first groups of Chinese universities rated “985”“211”“Double first-class”
- 浙江省第一所新型高等学府
The first New Types of Higher Educational University in Zhejiang province

浙江大学 – 华家池校区

ZheJiang University – HuaJiaChi Campus

- 华家池校区位于杭州市的市中心，西湖区
 - Huajiachi campus is located in the city center of Hangzhou, Xihu District
- 为浙大各校区中历史最悠久的校园
 - It is the oldest campus among the campuses of Zhejiang University
- 田径场、篮球场、排球场、羽毛球场、网球场等运动设施齐全，为培训学员提供了良好的运动环境。
 - 所有运动设施将需要使用体育馆券（每位学生每月将有10张免费券）
 - Track and field courts, basketball courts, volleyball courts, badminton courts, tennis courts and other sports facilities, providing a good sports environment for students.
 - All sports facilities need gymnasium ticket (Each student will have 10 free tickets per month)
- 华家池校区的建筑特色各异，中西合璧，古今融合。
 - The Huajiachi campus has different architectural features, combining Chinese and Western styles, combining ancient and modern.
- 校园内有“三山、一岛、六亭、一长廊”因此有“小西湖”之美称
 - There are "three mountains, one island, six pavilions, and one long corridor" on the campus, so it has the reputation of "Little West Lake"



<https://map.zju.edu.cn/index>

华家池校区地图

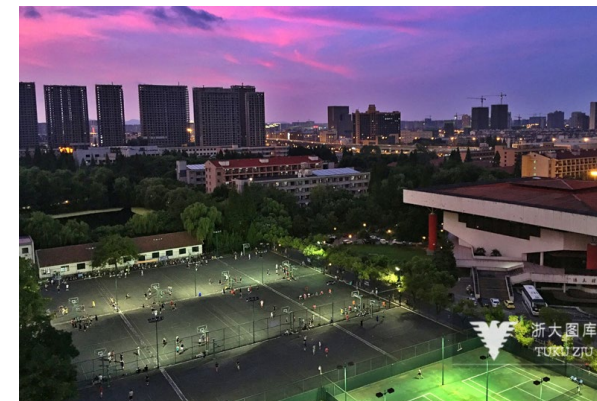
HuaJiaChi Campus Map



西澳大学学习中心@浙江大学 – 华家池校区

UWA Study Centre@ZJU – HuaJiaChi Campus





西澳大学学习中心@浙江大学 华家池校区

UWA Study Centre@ZJU
HuaJiaChi Campus



西澳大学学习中心@浙江大学 – 华家池校区

UWA Study Centre@ZJU – HuaJiaChi Campus



西澳大学学习中心@浙江大学 - 华家池校区

UWA Study Centre@ZJU - HuaJiaChi Campus



浙大图书馆
学习空间

ZJU Library
Study Space

西澳大学学习中心@浙江大学 – 华家池校区

UWA Study Centre@ZJU – HuaJiaChi Campus

- 食堂提供超过30余种主食、10余种小吃，更加丰富了师生的选择。
 - The canteen provides more than 30 kinds of staple food and more than 10 kinds of snacks, which enriches the choices for teachers and students.
- 食堂正中央是水吧，提供时下流行的饮品和甜点。
 - In the centre of the canteen is a drink bar, which provides popular drinks and desserts.
- 午餐和晚餐的供应时间现定为11点到13点30分、16点30分到19点30分。
 - The current serving time for lunch is from 11 to 13:30, and dinner from 16:30 to 19:30.



华家池校区-食堂

ZJU HuaJiaChi - Canteen



浙江大学 – 西溪校区

Zhejiang University – Xixi Campus

- 西溪校区位于杭州西北部，杭州高新技术产业开发区
 - Xixi campus is located in the Hangzhou High-tech Development Zone which is the northwest of Hangzhou.
- 原杭州大学所在地
 - The original location of Hangzhou University.
- 校区东面是西溪河，所以定名为西溪校区
 - The east side of the campus is the Xixi River, so it is named Xixi Campus.



浙江大学 – 西溪校区

Zhejiang University – Xixi Campus





<https://map.zju.edu.cn/index>

西溪校区地图

XiXi Campus Map



西澳大学学习中心@浙江大学 – 学生宿舍

UWA Study Centre@ZJU – Student Dormitory

浙江大学圆正宾馆 - ZJU YuanZheng Hotel

杭州市凯旋路431号 (431 Kaixuan Road, Hangzhou)

浙江大学圆正宾馆，直隶于浙江大学
The Hotel is directly affiliated to Zhejiang University.

宾馆以浙大文化主题为特色
The hotel features the cultural theme of Zhejiang University.

5分钟步行抵达浙大华家池校区校门
5 minutes walk to the gate of ZJU Huajiachi campus.

宾馆餐厅中汇聚杭帮菜、农家菜以及嵊州风味菜的多元特色
The hotel restaurant gathers the diverse characteristics of Hangzhou cuisine, farmer cuisine and Shengzhou cuisine.

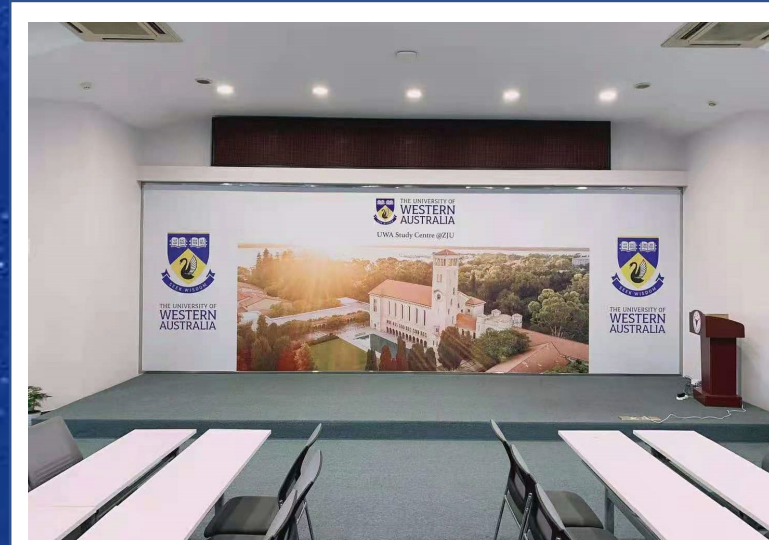
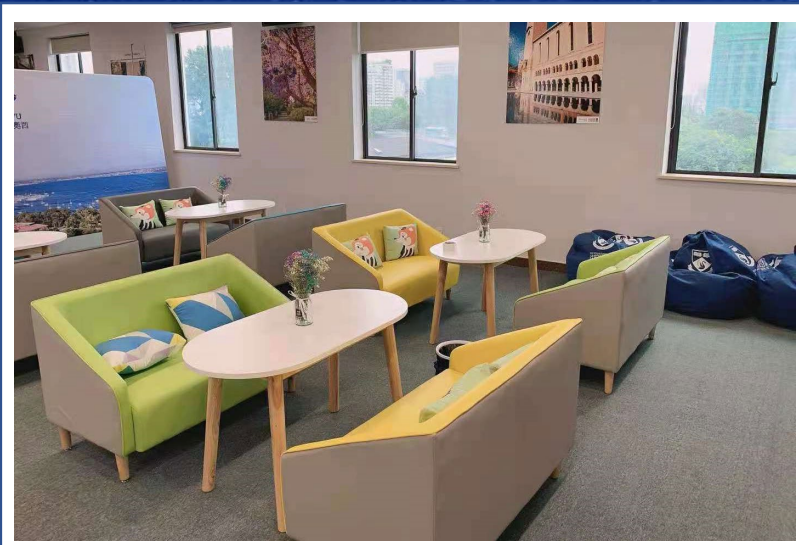
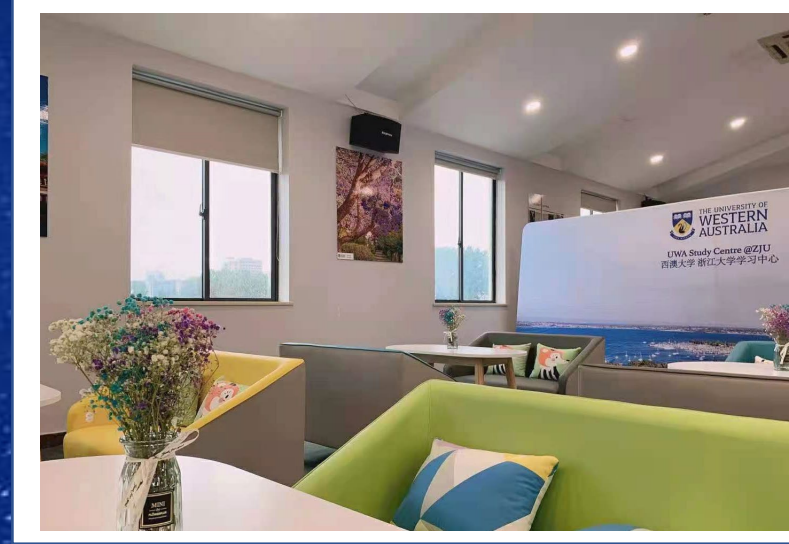
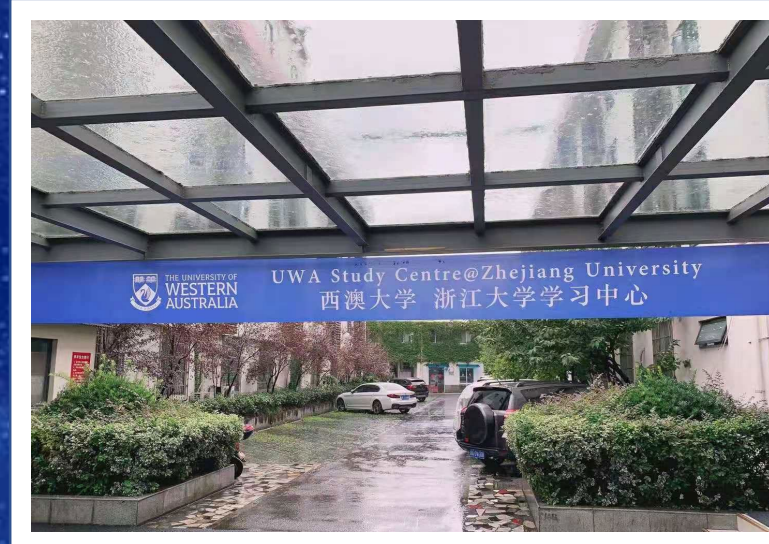




西澳大学学习中心学生宿舍 - 圆正宾馆
UWA Study Centre Student Dormitory
ZJU YuanZheng Hotel

西澳大学 - 学生活动中心

UWA - Student Service Centre



西澳大学学习中心 – 学生活动

UWA Study Centre – Student Activities



学生活动

Student Activities





西澳大学学习中心 - 每月生日会

UWA Study Centre - Monthly Birthday Parties

西澳大学学习中心学生宿舍 - 圆正宾馆

UWA Study Centre Student Dormitory - ZJU YuanZheng Hotel

- 两位同学一间宿舍，且每间宿舍配有单独洗手间
Each room will have an individual bathroom and is shared by two students.
- 每间宿舍内将会提供衣柜, 书桌, 椅子, 空调, 床, 床上用品包括床垫, 枕头, 以及被子 (同学们需自行携带枕套, 被单, 床单)
Each room will provide wardrobes, desks, chairs, air conditioner, beds and quilts (Students need to bring their own pillowcase, quilt cover and sheet).
- 每间宿舍将会有 **Wi-Fi** 网络连接
Each room will have Wi-Fi network.
- 住宿费用: **9690**人民币/学期, 包含水, 电, 网费
Accommodation fee: 9690 RMB/semester, including water, electricity and internet fees.
- 每周会有专业酒店保洁人员为同学们一次免费打扫房间 (扫地, 吸尘, 拖地)
Free room cleaning service provide by hotel once per week (sweeping, vacuuming and mopping).

西澳大学学习中心@浙江大学 - 其他费用

UWA Study Centre@ZJU – Other Fees

- 学生需支付**20元**制作浙大校园卡
Students need to pay 20RMB for the ZJU campus card.
- 如学生需使用图书馆需缴纳**200元**押金办理图书卡。押金将在学期结束后退还。
If students need to use the library, they need to pay a cash deposit of 200RMB for a library card.
The deposit will be refunded at the end of the semester.
- 每月学生将有**10张**免费体育馆使用卷，用完则需另外购买，**10元/张**。
Every month, students will have 10 free gymnasium tickets. If they are used up, they will need to be purchased additional tickets separately at 10RMB per ticket.
- 由于同学们无法参与浙大本校生的餐食费补贴，所以食堂消费将有**10%**的附加费用。
Since the students do not have the meal subsidy from Zhejiang University, there will be a 10% additional fee for the canteen consumption.
- 圆正宾馆入住时将需缴纳**300元**现金的押金，在退房时将退还。
When checking-in at YuanZheng Hotel a cash deposit of 300RMB is needed, and it will be refunded upon check-out
- 除每周一次的免费宿舍清洁外，学生将可以要求额外清洁服务，但将收取**30元/次**。
Students will be able to request additional room cleaning services, but will be charged 30RMB each time.

华家池校区 - 交通

HuaJiaChi Campus - Transportation

- 机场
 - 机场大巴至汽车南站，步行至汽车南站（秋涛路站），乘196路（3站）或乘坐597路、20路到（红菱新村站）浙大华家池校区。
- 火车
 - 杭州火车东站: 火车东站乘107路(8站),到 (景芳亭站) 浙大华家池校区。
 - 杭州城站火车站: 城站火车站乘200路(6站)到, (双菱路北口) 浙大华家池校区。
- 长途汽车
 - 汽车南站: 乘坐516路（11站）或196、44路，到浙大华家池校区。
 - 汽车西站: 乘b4路（7站），至（闸弄口新村站）浙大华家池校区；汽车西站乘179路（18站），至文晖大桥东站，换乘80路（3站），到浙大华家池校区。
 - 汽车北站: 乘516路（16站），到（浙大华家池校区站）浙大华家池校区。
 - 汽车客运中心站: 乘地铁1号线（6站），至闸弄口站，步行至机神村站，乘40路（2站），到（浙大华家池校区站）浙大华家池校区。

求是大讲堂

We are looking forward to seeing you at
UWA Study Centre @ZJU

我们期待在西澳大学学习中心 @浙江大学中和你见面