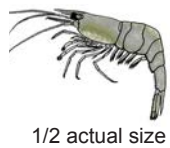
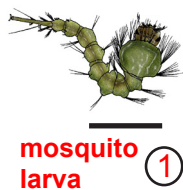
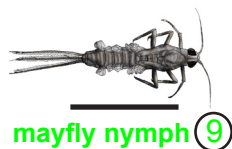


Which critter did you catch?

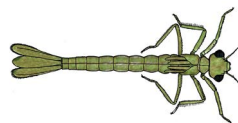
Circle what you found.



freshwater shrimp ③



dragonfly nymph ③



damselfly nymph ③



non-biting midge larva ③



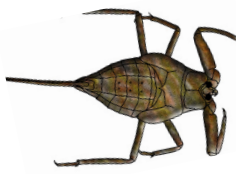
biting midge larva ④



water boatman ②
(black back)

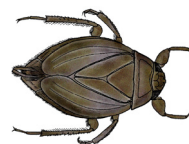


predacious diving beetle ②
(back legs move at same time)



1/3 actual size

water scorpion ③



giant water bug ①

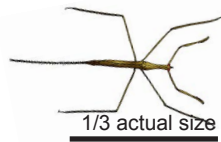


1/2 actual size

segmented worm ②

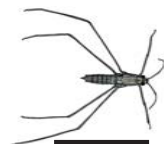


back swimmer ①
(swims on back)



1/3 actual size

needle bug ③
(quite large)



water strider ④



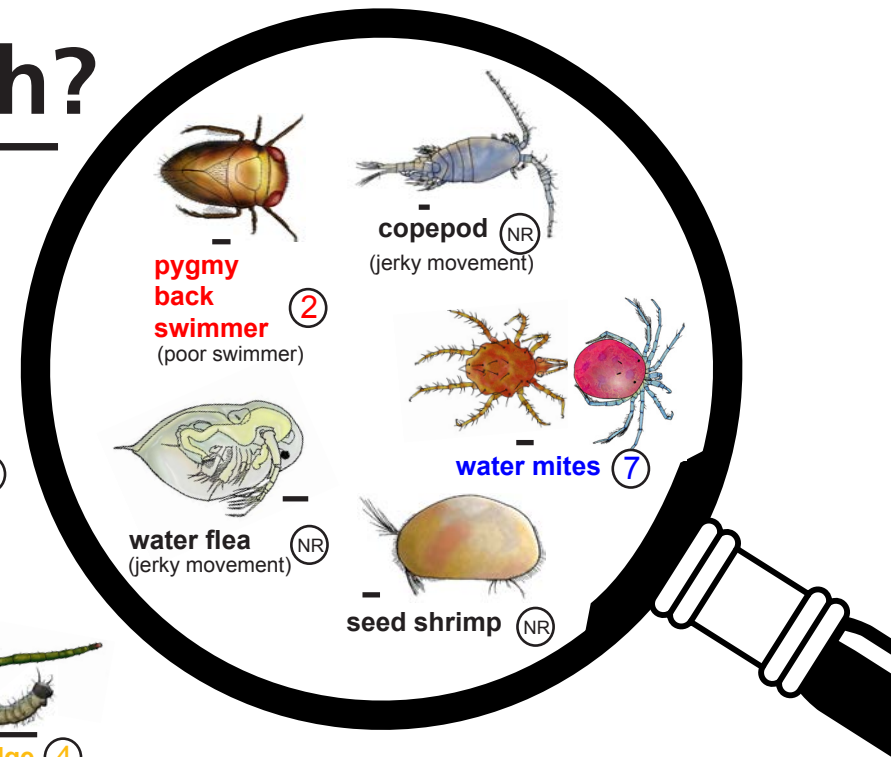
gilled snail ①



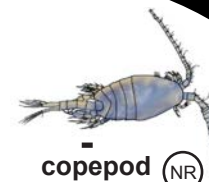
freshwater limpet ④
(single shell)



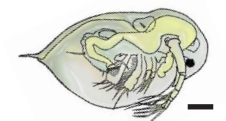
pea shell ⑤
(double shell)



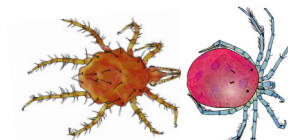
pygmy back swimmer ②
(poor swimmer)



copepod (NR)
(jerky movement)



water flea (NR)
(jerky movement)



water mites ⑦



seed shrimp (NR)

Invertebrate size (—)
average actual size unless stated otherwise

Pollution sensitivity

- (NR) not rated
- ⑩—⑧ very sensitive
- ⑦—⑥ sensitive
- ⑤—④ tolerant
- ③—① very tolerant

Adapted with permission from NRM Education, Natural Resources – Adelaide and Mt Lofty Ranges. All images on this ID Key are adapted by Steve Walker (2006) from the B&W images in 'Critter Catalogue: a guide to the aquatic invertebrates of South Australian inland waters (2004 EPA)' except for the Crawling Water Beetle (Steve Walker 2006).