

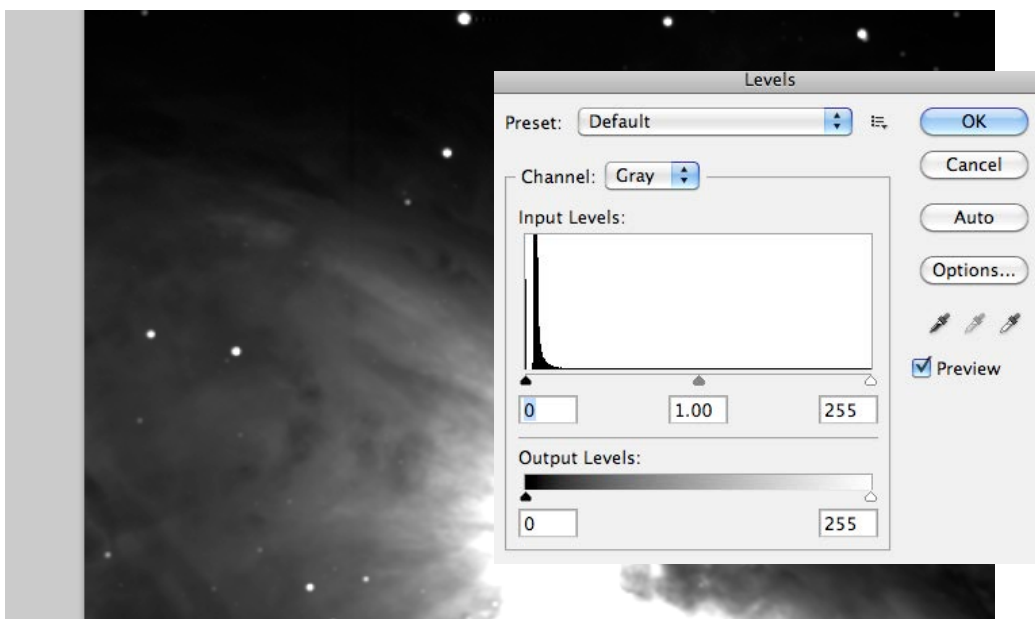
## STEP 1: Import red, green and blue images into Photoshop

## STEP 2: Adjust brightness and contrast

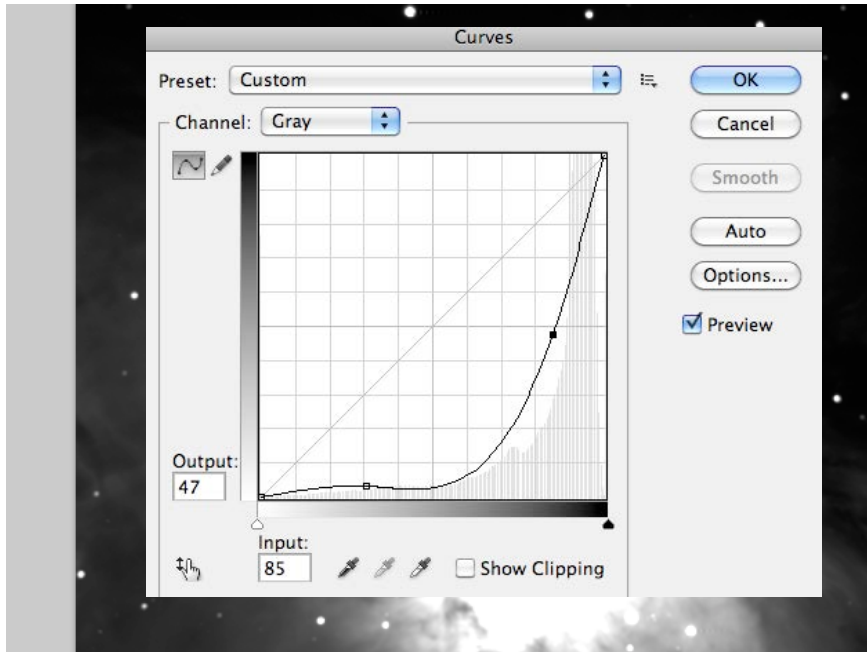
Image>Adjustments>Levels

L

OK



### STEP 3: Fine tune images (optional)

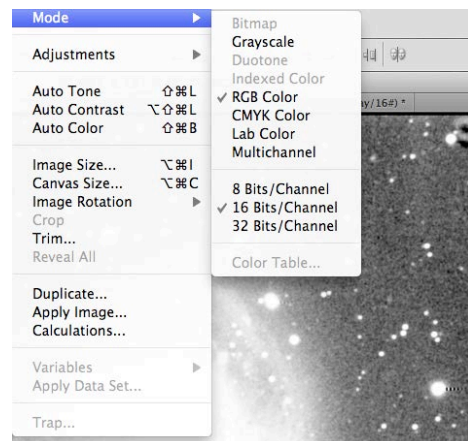


Image>Adjustments>Curves

M

OK

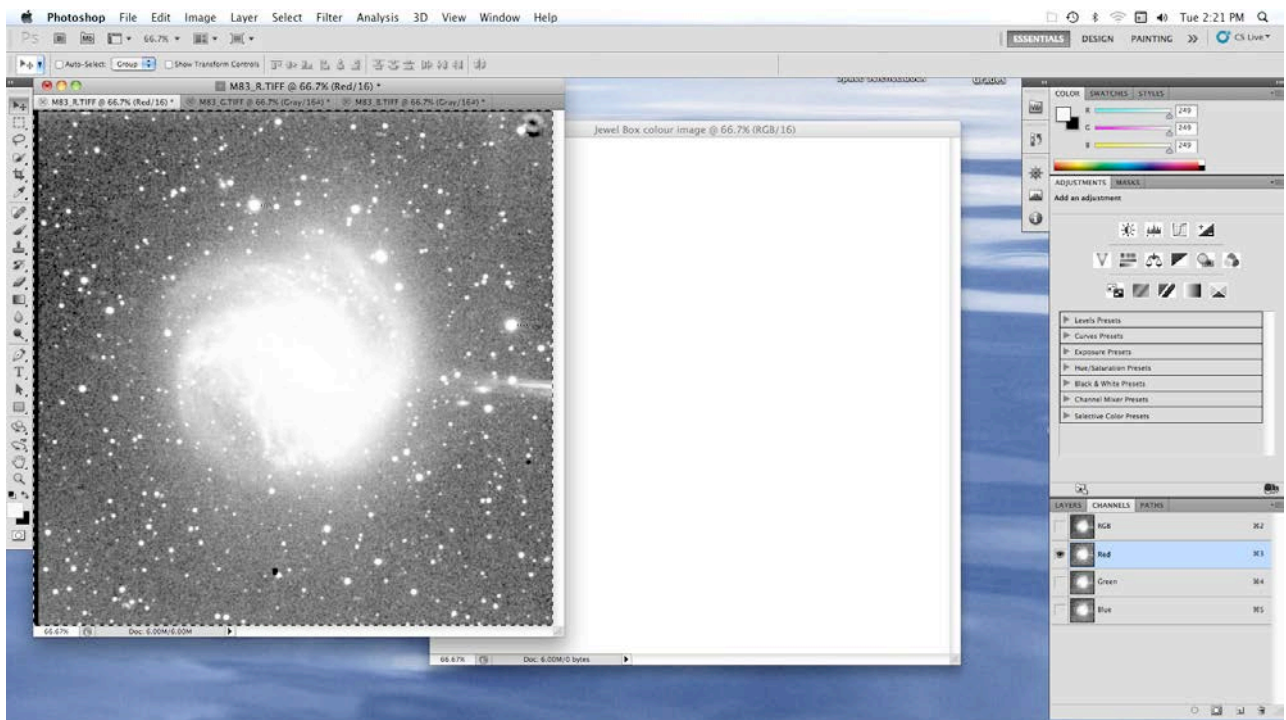
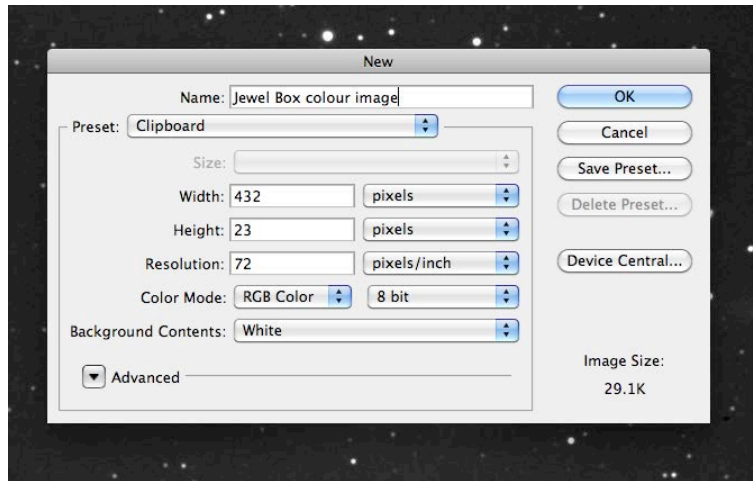
### STEP 4: Save your work



## STEP 5: Create a colour image

File>New

Image>Mode

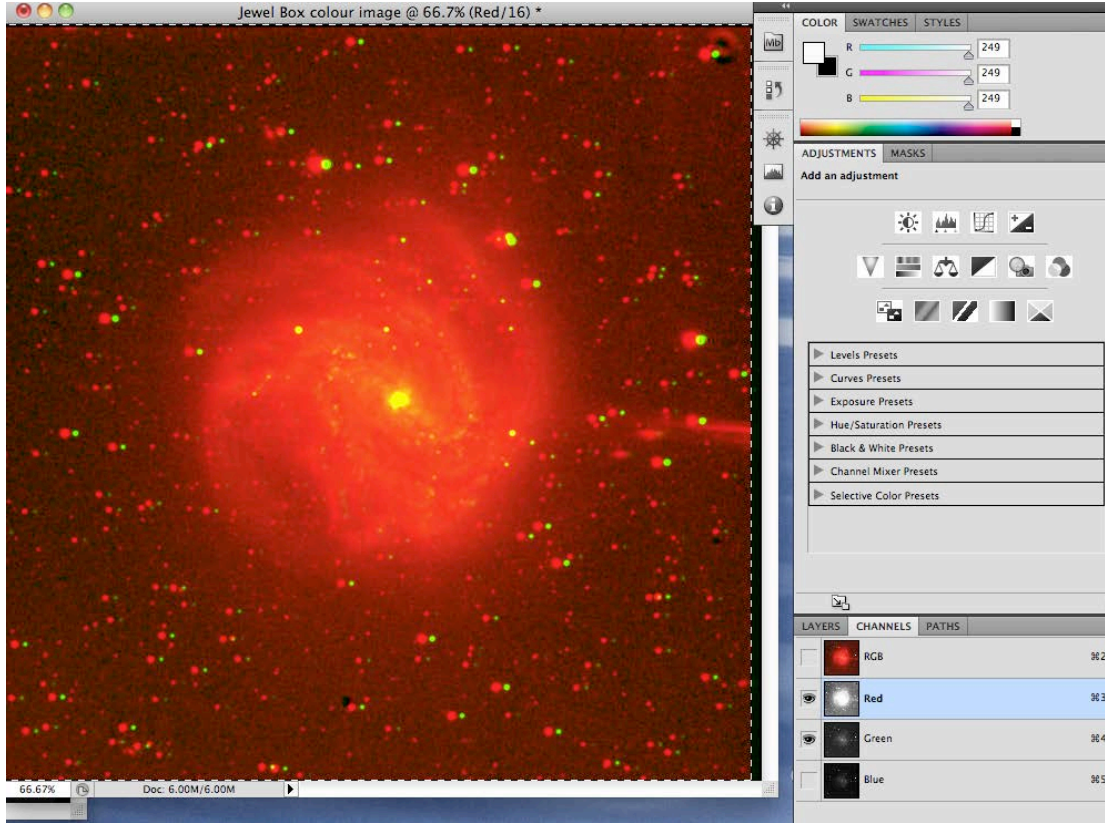


A

C

V

## STEP 6: Align images

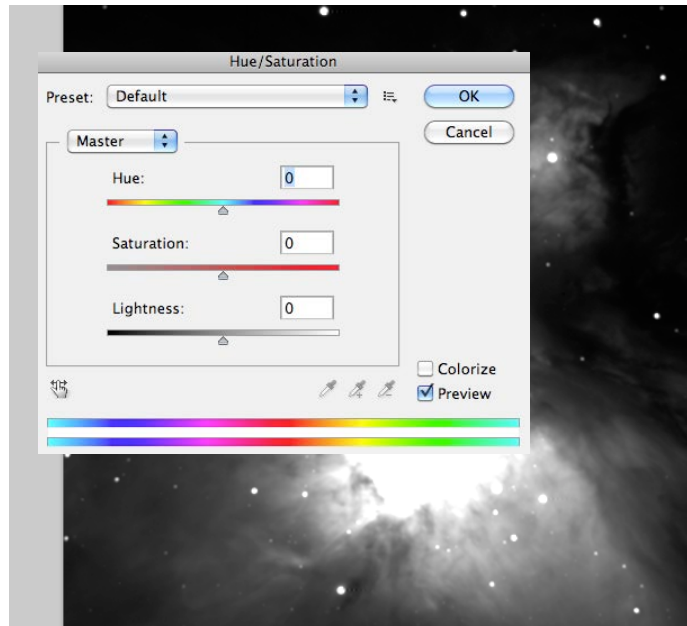


eyeball

eyeball

## STEP 7. Adjust colour and intensity

Image>Adjustments>Hue/Saturation



## STEP 8. Adjust sharpness

Filter>Sharpen>Unsharp mask

- Amount
- Radius
- Threshold

