

GETTING

at UWA

STARTED



UWA
PERTH · AUSTRALIA



**WELCOME
TO UWA**

POSTGRADUATE
NEW STUDENT GUIDE
TO UWA

CONTENTS

VC Welcome	4
Your first steps to becoming a UWA student	6
UniMentor	14
University Library	16
Academic support & study help	17
Success & wellbeing support	18
The Living Room	21
Financial support	22
Scholarships	23
Sport, yoga, fitness & recreation	24
Accommodation	25
Kickstart your career	26
UWA Advance	28
Freedom of expression & academic freedom	29
Study Albany	30
Study abroad	31
UWA Student Guild	32
Safety & security on campus	35
Important contact details for UWA students	36
Orientation or course advice	37

Follow us to stay up-to-date with UWA event, news and activities!

-  UWAstudents
-  UWA_students
-  uwastudents

Stay safer at UWA

Download the free SafeZone app to connect directly with UWA Security if you or a friend are ever in trouble on campus.

security.uwa.edu.au/security-on-campus



Acknowledgement of Traditional Owners

The University of Western Australia acknowledges the custodians and traditional owners of land on which our campuses are located.

At the main campus, Crawley, the University acknowledges the Whadjuk Noongar people as the traditional owners of the land on which it is situated. The Whadjuk Noongar remain the spiritual and cultural custodians of their land, and continue to practise their value, languages, beliefs and knowledge.

PROFESSOR AMIT CHAKMA
VICE-CHANCELLOR

Welcome

Hello, my name is Amit Chakma and I am pleased to introduce myself as your University's Vice-Chancellor

Dear UWA Students

I'm very pleased to welcome you to the UWA community as you embark on the next phase of your education journey.

I hope that throughout your time at the University, you'll find the experience to be thought-provoking and challenging; and that when you leave UWA you will have made lifelong friends, created many memories, and have a sense of purpose and enquiry that will empower you to make a difference in the world.

Our role as a University is to give you the knowledge and skills to be your best. You've chosen a University that has links to many of the world's top academic and research institutions and our courses are designed to equip you for success in an increasingly globalised world where knowledge is the universal currency.

I encourage you to make the most of the wide range of orientation and introductory activities on offer during your first weeks here. UWA is an inclusive and multicultural community that embraces and values diversity and all our students are equal and valued members of our community.

I look forward to seeing you on campus and meeting you soon.

Best wishes

Amit
Vice-Chancellor

Your first steps to BECOMING A UWA STUDENT

CONGRATULATIONS ON RECEIVING A PLACE AT UWA.
WE'RE DELIGHTED YOU'RE JOINING US THIS YEAR.

Now you've accepted your offer, your journey at UWA begins.

The first part of this Guide is designed to give you essential information to lead you through the next three stages of Preparing for Enrolment, Enrolment and Orientation.

To begin with, login to the UniStart website uwa.edu.au/unistart and follow the steps. UniStart is your official guide to enrolling at UWA. UniStart has four steps and you've already done the first one.

1 Accepting your offer – completed 2 Preparing for enrolment 3 Enrolment 4 Orientation

2 Preparing for enrolment

ACTIVATE YOUR UWA STUDENT ACCOUNT ONLINE

Known as your "PHEME" account pheme.uwa.edu.au this gives you access to UWA's online systems and services, including:

- studentConnect student.sims.uwa.edu.au – manage your enrolment and personal details online and view your academic record and exam timetables
- Student email – the University's official means of communication with students
- My Library Account – check when your library items are due, make renewals and requests, view your unit readings, access the UWA library catalogue
- Learning Management System (LMS) – access unit materials including online discussions boards, unit outlines and handouts
- Lecture Capture System (LCS) – access online lecture recordings
- Class Allocation System (CAS) – nominate your preferences for class times

To activate your PHEME account you need your:

- eight-digit UWA student number (provided in your offer letter)
- date of birth

Unique Student Identifier

You need a Unique Student Identifier (USI) to be eligible for Commonwealth assistance (Commonwealth Supported Place and/or HELP loans). You must have a USI in order to graduate, this includes all Australian students studying online or on campus, and international onshore students. International students studying offshore do not need a USI.

Get your USI now, and submit it through studentConnect under Personal Details then USI.

CHOOSE YOUR UNITS

Before you enrol, you need to decide which units to take this semester.

A standard full-time enrolment is four units per semester (eight units per calendar year).

When choosing your units it's important to consider:

- your degree requirements – check the UWA Handbook handbooks.uwa.edu.au/postgraduate
- the availability of units – in each of the semesters or non-standard teaching periods
- unit rules – including prerequisites, co-requisites and incompatibilities
- the class timetable – this can be found on CAS (our Class Allocation System) cas.uwa.edu.au/student (refer to page 8 for more info)

International students

In order to meet your visa conditions, International students are normally required to study full time (four units, worth six credit points, per semester). Contact the International Student Support team help-international@uwa.edu.au for more information.

Domestic students

Full-time study for domestic students is three six-point units or more.

COURSE ADVICE

The University's online postgraduate handbook handbooks.uwa.edu.au/postgraduate is a good place to start when planning your enrolment.

Speak to a course adviser to learn more about your course or for help choosing your units. Contact your Advising Office. uwa.edu.au/students/Contact

NEED ADVICE?

Your Student Advising Office or the UWA Transition team are here to help.

Student Advising Offices

W: uwa.edu.au/students/Contact

Transition Team

The Transition team offer drop-in enrolment support sessions in-person or over the phone.

T: +618 6488 7130

E: askUWA

3 Enrolment

Once you've put together your study plan, enrolling in your units is easy!

ENROLMENT STEPS

If you haven't accepted your offer and activated your UWA student account you won't be able to enrol. (Refer to the [Preparing for Enrolment](#) section on pages 6–7).

- Log on to **studentConnect** [student.sims.uwa.edu.au](#) using your student number and PHEME password.
- Go to 'Course Details' then 'Online Enrolment' and follow the enrolment steps.
- As part of your online enrolment you will be prompted to complete an application for HECS-HELP if you're eligible.

YOUR TIMETABLE

Working out your timetable is your responsibility and an important part of managing your enrolment as each unit will require you to attend classes which may include lectures, tutorials, workshops and/or labs (laboratory classes).

UWA's timetable system is called CAS (Class Allocation System) [cas.uwa.edu.au/student](#) and it allows you to select your preferred class times, using a preference system. It's as easy as listing the class times you prefer for each unit, in order from first preference to last.

- 1 lodge your preferred class times for each unit (if available).
 - 2 check which classes you have been assigned to once the allocations are released.
- You can change your allocations within CAS provided there is space available in the classes you'd like to move into. If a unit is not available for class registration through CAS, you'll be given instructions on how classes will be assigned by your unit coordinator or Student Advising Office.

For assistance with CAS

- Check out the help videos [cas.uwa.edu.au/student](#)
- Ask for help at a Library Information Desk
- Find answers to FAQs via askUWA [ipoint.uwa.edu.au](#).
- Contact the Transition team

You can find out if a class is recorded and available online through the Learning Management System (LMS) by reading the Unit Outline. Online recordings are useful if you're unable to attend class or have class clashes.

CHANGING YOUR ENROLMENT

You can change your unit enrolment up until the end of the first week of semester via studentConnect [student.sims.uwa.edu.au](#). If you're not happy with your unit choices, or your interests change, contact your Student Advising Office for further advice on what's best for you.

UWA STUDENT CARD

Your UWA Campus Card [uwa.edu.au/students/Getting-started/Campus-card](#) is important as it provides:

- proof of identification (compulsory for examinations)
- library borrowing and electronic database access
- cash storage for copying and printing
- access to buildings

Once you've activated your PHEME account and enrolled in your units, simply upload a headshot of yourself and a copy of your ID (passport, Australian driver's licence, or Australian Proof of Age/Identity card) through CaptureMe and we'll send you an email to let you know when you can collect your campus card on campus - it's that easy!

FEES

It's your responsibility to ensure you're aware of your fee obligations [uwa.edu.au/students/My-course/Fees-and-payments](#).

These may include:

- tuition fees
- SSAF [uwa.edu.au/students/my-course/fees-and-payments/ssaf](#) (Student Services and Amenities Fee) is compulsory for all students
- administrative fees and charges

Domestic students are normally eligible for **FEE-HELP** to pay for their tuition fees. For more information visit the Australian Government's StudyAssist website [studyassist.gov.au](#).

* Outstanding fees may prevent you from enrolling, accessing your results, graduating and ordering transcripts.

NEED ADVICE?

Turn to page 37 for orientation and course advice details.



4 Orientation

Completing your orientation will provide you with everything you need to kick-start your studies at UWA.

O-WEEK

O-Week is held in the week before semester starts.

During the week, there are lots of fun and informative activities designed to help you learn everything you need to know about making the most of your time at UWA , including:

- the chance to join more than 150 awesome clubs and societies through the UWA Student Guild
- heaps of great activities offered by UWA Sport
- all-important course information and the opportunity to meet academics and staff from your school
- the extensive range of student support services available to you

Best of all, you'll meet other students in similar courses and make new friends!

O-Week is delivered both online and face-to-face, and the UniStart website uwa.edu.au/unistart has the information about your preferred Orientation program. All activities and events are recorded and available in the "Your Orientation" module accessible via the **Learning Management System**.

ACADEMIC ORIENTATION

Your academic orientation includes an online self-paced unit designed to make you aware of your academic responsibilities at UWA. All students are automatically enrolled in this unit.

You must complete the unit within your first semester to record a pass (and avoid a fail) on your academic record and can access ACE by logging on to the **Learning Management System** lms.uwa.edu.au (LMS).

This is a not-for-credit unit and does not count towards your semester study load - it's a good idea to complete it early in semester to gain the maximum benefit.

Academic Conduct Essentials (ACE)

Academic Conduct Essentials student.uwa.edu.au/learning/resources/ace (AACE4000) introduces you to the basic issues of ethical scholarship and the expectations of correct academic conduct at this University. The fostering of academic integrity is given high priority at UWA and is supported by institutional policies and practices.

UNIT MATERIALS

Once you're enrolled check your unit outlines to find out what materials are required for your units (textbooks, recommended readings and study aids such as calculators, lab coats and safety glasses). Unit outlines handbooks.uwa.edu.au/units are usually available online and/or handed out in your first class. Once you've enrolled, you can also access textbook lists through studentConnect student.sims.uwa.edu.au.

Unit Readings

These provide students with access to essential and recommended readings, both online and available in the library's high demand area uwa.edu.au/library/find-resources/unit-readings.

Assessment

Each unit has its own methods of assessment, usually involving a combination of essays, smaller written assignments or worksheets, exams, tutorial presentations, attendance and/or practical components. Check your unit outline for details. Your unit coordinator can answer any queries. Find unit details via the UWA Handbook handbooks.uwa.edu.au/units.

RIGHTS AND RESPONSIBILITIES

Get to know your rights and responsibilities as a UWA student. It's important to know the academic and personal expectations that you're expected to meet:

- The Charter of Student Rights and Responsibilities
- Code of Ethics and Conduct
- Student and course rules handbooks.uwa.edu.au/course-rules
- Equity and diversity advisers are available for confidential advice with any issues

As a student at UWA, you're part of a community that values academic integrity, and there are important principles, rules and ways of behaving that are expected of you. Find out more uwa.edu.au/students/my-course/student-conduct.



4 Orientation

CONNECT WEEKS

This six-week program will connect you with a wide range of UWA's student services and activities; check your email weekly for details of what's on.



WEEK 1 STUDY CONNECT

Get the study skills, tools and resources you need to get started at uni.

This week includes a range of study workshops and library tours or you can check out our STUDYSmarter activities to get the most out of uni. This week is also an ideal time to get your online learning modules (ACE, CARS and/or ISE) done – you'll find them on LMS.



WEEK 2 CAREER CONNECT

Uni's just started but now's a good time to think about how your studies will get you to where you want to go.

Learn about internships, volunteer opportunities and Work-Integrated Learning (WIL) which you can do as part of your degree. There are also online career workshops, and opportunities to get one-on-one advice from our Career Advisers.

Learn how to get started on the Careers and Employability Award.



WEEK 3 SOCIAL CONNECT

Uni is more than study – make this week a time to meet new people, sign-up to a Guild club or society or get active with UWA Sport.

There's on-campus and off-campus excursions and lots of activities and cultural events happening this week to connect you with UWA's fun side. The Guild has over 160 clubs to suit all sorts of hobbies and interests! And, if you haven't already, make time to meet up with your UniMentor today.



WEEK 4 WELLNESS CONNECT

How are you feeling? UWA cares about your health and wellbeing so there's lots of services to support you, including a medical centre and a counselling team on campus.

Stay mentally and physically fit and connect with UWA's health and well-being team.

Check out UWA Sport it has a great gym, fitness classes and yoga! There are a huge range of medical services including doctors and a counselling team and the Guild also has support services for you.



WEEK 5 COMMUNITY CONNECT

Your UWA community is much more than going to classes. We have on-campus art galleries and museums, amazing exhibitions and Perth Festival events.

You can make a difference in the wider community by connecting with the McCusker Centre for Citizenship. They offer internships in not-for-profit organisations where you can give back to the community while earning credit towards your degree. Check out the Guild's clubs and societies where you can meet other students and embrace being part of the UWA community.



WEEK 6 GLOBAL CONNECT

See the world and broaden your views while adding to your employability by studying overseas as an exchange student.

UWA loves that we have such a diverse community and we celebrate it by holding cultural events throughout the year. The Careers Centre offers opportunities for you to network with global companies across a range of industries.

UniMentor

Connect with your UniMentor today!

AS A NEW UWA STUDENT YOU HAVE A UNIMENTOR TO HELP YOU SETTLE IN AND GET ALL THE INFORMATION YOU NEED ABOUT LIFE AS A UWA STUDENT.

Your UniMentor is an experienced UWA student. They come from all walks of life and cultural backgrounds, and, collectively they speak more than 70 languages and dialects! Whether you're an undergrad or postgrad, from around Perth or overseas, your UniMentor will help make life at uni a little bit easier.

If you can't make it onto campus and are studying online, they're a great point of contact to help with all things like how to use studentConnect; learning to use the library (both online and in-person); and, how to submit

an assignment. And, when you can make it onto campus, they'll show you the best coffee places and study spots too!

UniMentors can answer any questions you have, and if they can't, they'll point you in the direction of someone that can. Your UniMentor will make sure you settle into UWA, whether online or in person, and make sure you have the support you need.

[> Register to be matched with a UniMentor](#)

"It felt like I had a friend even before I started uni. Jorge helped answer all my questions. Without his guidance, I think I would've been entirely lost."



University LIBRARY

No matter what subjects you're studying or which stage of your academic journey you're on, the University Library offers a wide range of facilities and services, supporting you every step of the way.

GETTING STARTED

Library staff can assist you with accessing UWA systems and setting up your devices, finding information for your assignments, referencing, borrowing resources and using the LMS and student webmail. We also have a range of self help resources available online:

- Library Survival Guides
- IT and printing Support
- Unit readings
- Library website

For IT support, including VPN access, visit uwa.edu.au/library/help-and-support/contact

ON CAMPUS LIBRARIES

UWA has a number of libraries across campus with extensive opening hours. All of our libraries have bookable group study spaces; go to library-uwa.libcal.com to reserve a space.

Reid Library

Features include:

- Quobba Gnarning Café
- outdoor study spaces on the terrace and balcony
- Dickinson Resource Room with specialised study equipment and ergonomic furniture for UniAccess registered students
- Parents Room

Barry J Marshall Library

Named after Professor Barry J Marshall, who was a co-recipient, with Professor (John) Robin Warren, of the Nobel Prize for Medicine in 2005, the science, engineering, and business print collections are housed here. The Marshall Library also features the following:

- Catalyst Café
- dedicated postgraduate study spaces
- Parents Room
- Resource Room.

Other libraries

- Beasley Law Library
- EDFAA (Education, Fine Arts and Architecture) Library (UWA Nedlands Campus)
- J. Robin Warren Library (UWA Health Campus)

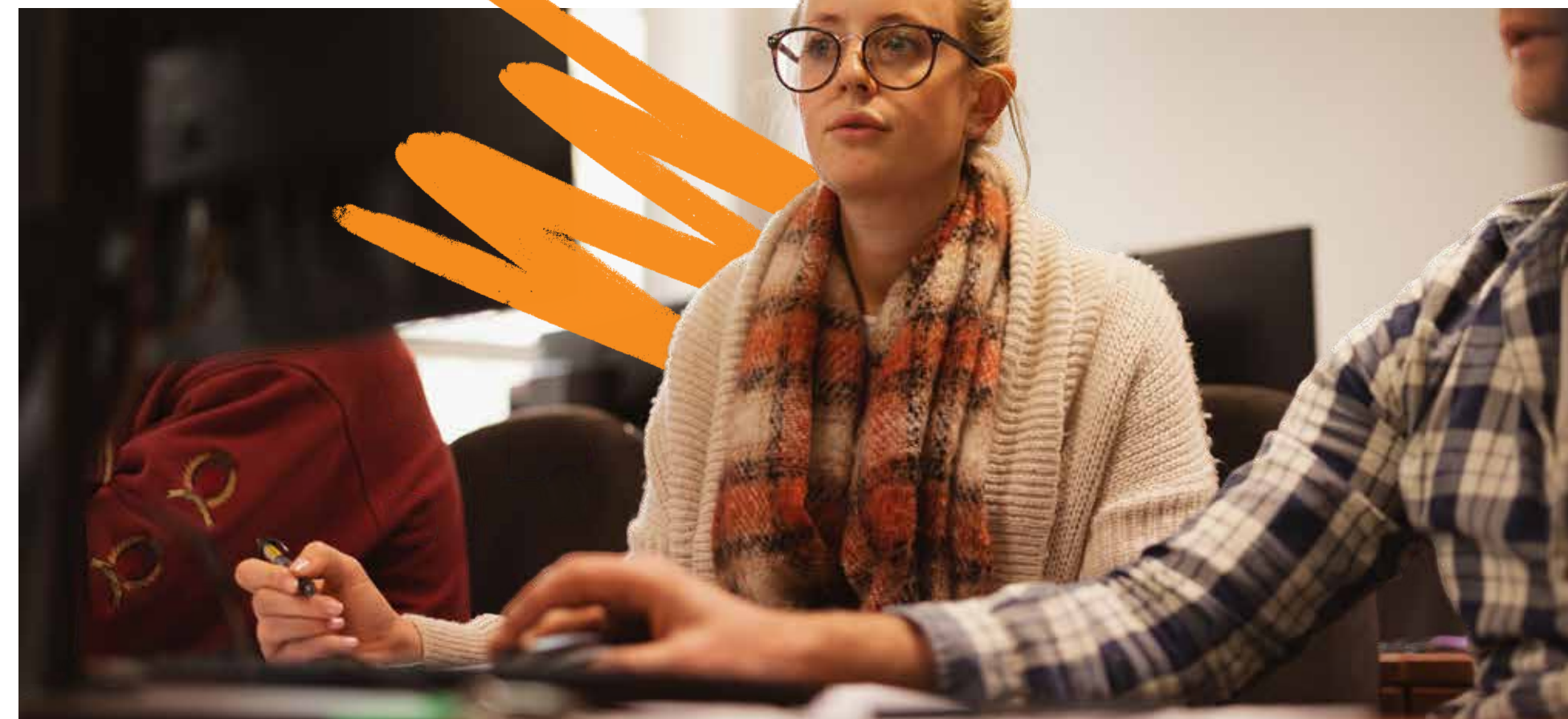
T: +618 6488 1255

E: web.uwa.edu.au/askuwa

W: uwa.edu.au/library

Our library team offer virtual and in-person assistance, including

- 'Book a Librarian' for assignment help
- Chat to us face-to-face in any of our libraries
- Telephone
- Live Chat (via our website)
- Email



Academic Support & STUDY HELP

Whether you're undergrad or postgrad, our STUDYSmarter team can help you with a huge range of academic skills services and resources – all for free!

UWA's Academic Skills Centre, is here to help you with free, expert, personalised advice on:

- Online learning, study techniques and time management
- University writing, assignment prep and exams
- English language and presenting
- Maths and stats skills
- Research projects

Book individual online consultations, join specialised virtual workshops, and access relevant, UWA-specific digital learning resources via the STUDYSmarter website and the UWA Study Success LMS.

E: studysmarter@uwa.edu.au

W: studysmarter.uwa.edu.au



Success & WELLBEING SUPPORT

DOCTORS & MEDICAL ASSISTANCE

UWA has a team of health professionals on campus dedicated to providing health care for our students and the UWA community. Health and Medical Services is located in Guild Village (2nd floor, South Wing).

Health and Medical Services:

- will bulk bill students with a valid Medicare card
- directly bill for international students with a valid Medibank insurance policy. (Medibank is UWA's preferred OSHC provider).
- assist you to book an appointment with an Alcohol and Drug counsellor

Make sure you are up to date with all your immunisations including COVID booster vaccines. UWA Health and Medical Services offers vaccinations and also supports the government vaccination catch-up program for students under 20 years.

Your immediate family's health can also be supported by our Health and Medical Services; please speak to someone at reception if you need to make appointments for your family.

If you're a domestic student, you can apply for your own Medicare Card at servicesaustralia.gov.au/medicare-card

If you're an international student, it's important to make sure your OSHC policies are active. If you are with Medibank check through this link: medibankoshc.com.au/oshcactivate

For other OSHC providers please call their customer support lines to confirm.

- If you are travelling from overseas and have a medical condition that will require regular medical support, please ensure you have all medical documentation from your doctors back home.

Making an appointment

We are currently offering both online consults via telehealth and face-to-face appointments which you can book online.

> Book an appointment online

T: +61 8 6488 2118

W: uwa.edu.au/students/Support-services/Medical-Centre

COUNSELLING & PSYCHOLOGY

Adjusting to life as a uni student can sometimes make you feel a bit anxious, out of sorts or stressed. Our counselling team understand and are able to help you find the support you need.

Our counselling services are confidential and can help you work through issues such as:

- problems with your study
- relationship advice and support (personal and professional)
- feeling anxious, stressed or depressed
- balancing the demands of family, friends, study and work
- coping with traumatic events
- settling into life in Perth or moving away from home
- addictions (drug or non-drug related)
- sexuality
- pre-existing mental health concerns

On-shore International students

Our staff have worked with students from many different cultural backgrounds and are able to help you overcome a range of challenges, including:

- adjusting to a different culture and language
- loneliness, settling in and dealing with homesickness if you've moved to Perth to study

Other Counselling & Psychology services

If you'd rather not use a UWA service we can refer you to an external service. Or, if you'd like to learn ways you can help yourself or others, check out our training and workshops uwa.edu.au/students/Campus-life/Volunteering/Health-Promotions to gain new skills.

T: +61 8 6488 2423

W: uwa.edu.au/students/Support-services/Mental-health-and-wellbeing

INTERNATIONAL STUDENT SUPPORT

When you arrive

The Study Perth Welcome Service will be there to welcome you at the Perth International Airport. You will receive a Welcome Pack from the team who can also help you with any questions you might have about Perth. If you miss them at the Perth Airport, please email hub@studyp Perth.com.au

UWA International Student Lounge

The UWA International Student Lounge is a welcoming and dedicated space for all new international students to drop in before and during orientation. Here you can find advice about settling into life at UWA and in Perth including upcoming social events and meeting other students.

Open Monday to Friday, 9.00 am to 4.00 pm

UWA's International Student Support team provides support to international students related to:

- Adjusting to life in Australia and studying at UWA
- Understanding student visa conditions and assisting with CoE (Confirmation of Enrolment)
- Welfare or personal issues that affect your ability to study
- Approved leave or withdrawal
- Grievances and appeals
- Social events and networking opportunities

T: +61 8 6488 7478

E: askUWA@uwa.edu.au or help-international@uwa.edu.au

W: uwa.edu.au/students/Getting-started/International-students



BUILD YOUR WELLBEING

The Health Promotion Unit provides a range of programs to help you stay healthy, help others and create a supportive University Community.

Free courses and workshops include:

- Mental Health First Aid training
- Step Up Bystander workshops
- Respectful Relationships education
- LGBTQIA+ Ally training
- Lived Experience Storytelling
- Wellbeing workshops and events
- Peer-led wellbeing checks on sleep and alcohol use

Register for all courses via our website.

T: +61 8 6488 3173

E: healthpromotion@uwa.edu.au

W: uwa.edu.au/students/Campus-life/Volunteering/Health-Promotions

LGBTQIA+ SERVICES & SUPPORT

Adjusting to life at university can be overwhelming if you're part of the LGBTQIA+ community. You can contact the Guild's Pride Department for community events; they also have a common room in Guild Village on the third floor where you can hang out. UWA has a great *Ally Network* that can support you. Look out for the Ally signage on office doors.

Guild Pride Department

facebook.com/uwastudentguildpride

E: pride@guild.uwa.edu.au

Off Campus Support

Qlife: qlife.org.au

Living Proud: livingproud.org.au

Freedom Centre: freedom.org.au

ACCESSIBILITY SUPPORT

For students with a disability, learning difficulty, medical or mental health condition (such as anxiety or depression), the UniAccess team uwa.edu.au/students/Support-services/disability-and-accessibility can support you with your studies so you can achieve your academic best. The team can help you whether your condition is ongoing, temporary or episodic.

The UniAccess team are highly qualified advisers who will listen, provide information and work with you to come up with solutions. Any information you provide is confidential and your health documentation is private and secure and will not be seen by your school, home university or government.

Some of the things UniAccess can do

- Help you to maximise your academic potential, including accessible course materials and special consideration
- Give advice on individual disability-related matters
- Facilitate physical access to the campus, equipment and technology
- Liaise with departments and schools on your behalf
- Make alternative arrangements for examinations
- Match you with student support assistants, such as note takers
- Discuss your options if things aren't going well
- Support you if you are a carer of someone with a disability or chronic medical condition

Unsure if we can help? Book an appointment or give us a call to chat. Our team offers face-to-face, online or telephone appointments.

T: +61 8 6488 4630

E: UniAccess@uwa.edu.au

W: uwa.edu.au/students/study-success/uniaccess



The Living Room is a welcoming and comfortable wellbeing space where there is always a friendly face if you are feeling stressed, upset or just need a chat. No appointment required – just drop in.

You will be welcomed by a trained Peer Supporter who will assist your individual needs and make connections with other services and wellbeing activities.

Who can visit The Living Room?

The Living Room is here for you if you are feeling:

- Lonely or homesick
- Worried, stressed or anxious
- Down or blue
- Uncertain or confused about study or work
- Upset or distressed

You're also encouraged to drop in if you are:

- Experiencing grief or loss
- Struggling with a uni, work, or relationship issue
- On a waitlist for health services, or you're not sure which services to access

Weekly wellbeing activities

There are weekly wellbeing activities, including free yoga, and visits from student support dogs!

Location and opening hours

Ground floor, Shenton House (near The Tav).

Monday-Friday 10am-4pm (except UWA shutdown periods and public holidays)

No appointment required.

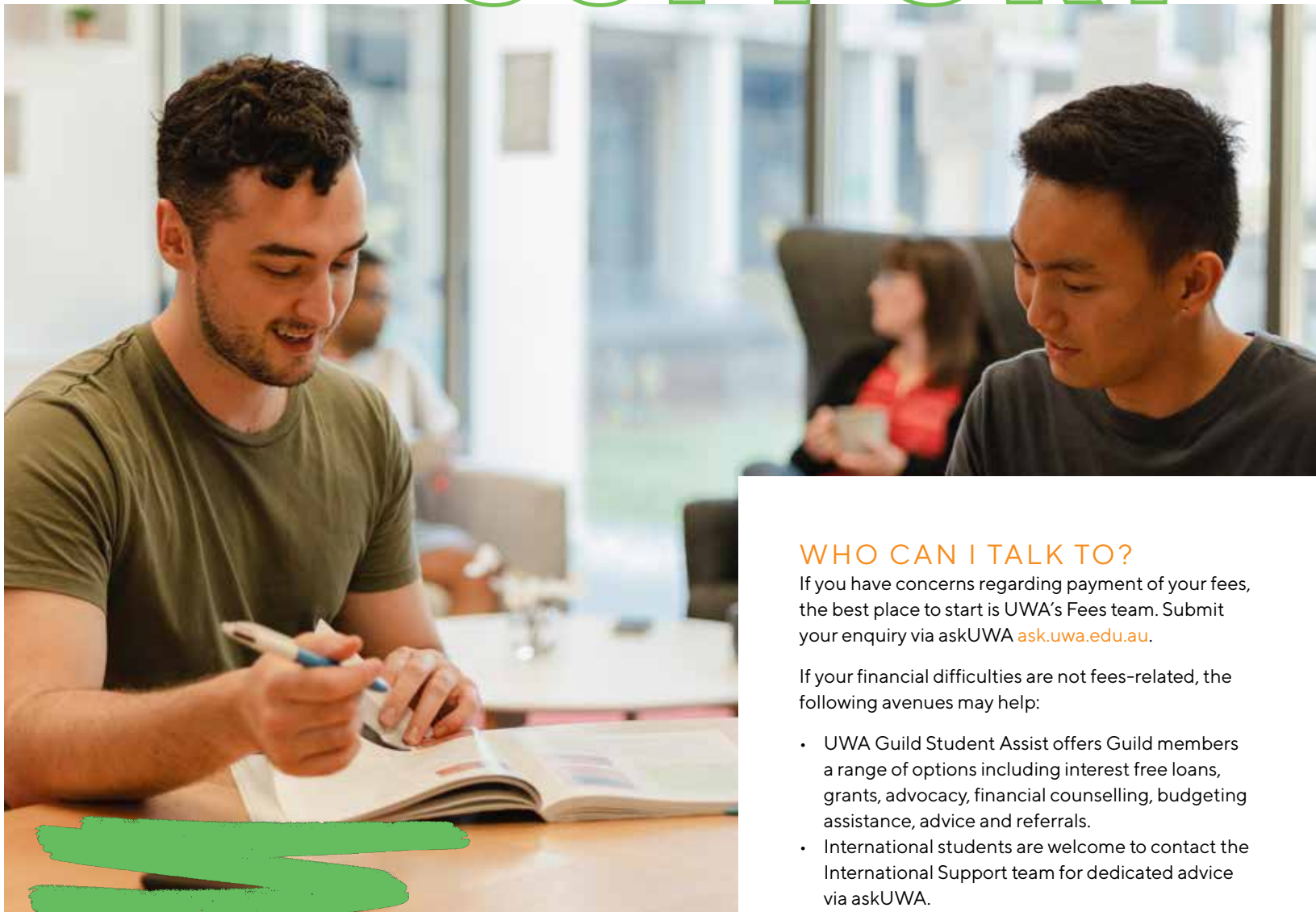
W: uwa.edu.au/students/Support-services/The-Living-Room





Sometimes unforeseen challenges can have a serious impact on your finances and financial stress can be difficult to deal with. Depending on your personal situation there are a number of options available.

Financial SUPPORT



WHO CAN I TALK TO?

If you have concerns regarding payment of your fees, the best place to start is UWA's Fees team. Submit your enquiry via askUWA ask.uwa.edu.au.

If your financial difficulties are not fees-related, the following avenues may help:

- UWA Guild Student Assist offers Guild members a range of options including interest free loans, grants, advocacy, financial counselling, budgeting assistance, advice and referrals.
- International students are welcome to contact the International Support team for dedicated advice via askUWA.

For further details, refer to the Financial Support information uwa.edu.au/students/Support-services/Financial-assistance on the UWA Students website.



Scholarships

UWA offers students a range of scholarships that recognise academic, leadership, equity and sporting achievements. We also provide support to residential, regional and Indigenous Australians.

Applying for a UWA scholarship is now easier than ever!

- > Simply fill in our [step-by-step online application](#) and we'll show you the scholarships you're eligible for.

Sport, YOGA Fitness & RECREATION

AT UWA SPORT

Whether you're training for a gold medal or looking for a spin, dance or Pilates class, UWA Sport offers lots of programs and membership options.

If you're living in Perth, then become a UWA Gym member to get access to over 30 group fitness classes a week, work-out in our great gym or practice your skills in swimming, squash, basketball, or tennis.

If it's some healthy competition you're after, you can join our interfaculty, intercollege, or social competitions, or one of our sports clubs - there are more than 30 to choose from.

For student athletes playing high-level sport, we encourage you to apply for our Student Athlete Development Program.

To learn more about how you can get active at UWA, visit UWA Sport sport.uwa.edu.au.



Accommodation

Find your new home and set yourself up for success with UWA student accommodation. Our dedicated Accommodation Concierge service takes the guesswork out of finding the right living options for you.



EXPERIENCE COLLEGE LIFE: UWA ACCOMMODATION

Our residential colleges offer world-class student accommodation, where you can enjoy an amazing lifestyle, with rental packages that include meals, Wi-Fi, all your utilities and a great community of friends.

If you're looking for more privacy, or perhaps you're bringing your family with you, then our range of self-contained apartments and houses in Crawley Village might be more your style.

Managed by the University and located within minutes of the UWA Perth Campus, Crawley Village offers short stay and longer term leases for students and visiting scholars.

APPLY FOR COLLEGE ROW
livingoncampus.uwa.edu.au



EXPAND YOUR HORIZON: CITY ACCOMMODATION

If you want to live close by, but are keen for more hustle and bustle in Perth's CBD, then our off-campus accommodation options might be more your thing.

UWA has endorsed a network of accommodation providers that offer student-focused living, centrally located in Perth city, only a short bus ride from our main campus.

Many of these providers offer package deals, with plenty of different room types - from self-contained shared apartments, to dorm-style accommodation options.



FIND THE PERFECT FIT: PRIVATE RENTALS

If you've got particular requirements, or simply want to have more control of where you live and what sort of accommodation you live in, then the private rental market is the best option for you.

Our Accommodation Concierge team can connect you with a network of real estate providers who are experienced in the student rental market.

What's more, you'll have access to online resources to help you understand the do's and don'ts of house-hunting in Perth and expert tips for crafting a winning rental application.



LIVE LIKE A LOCAL: HOSTED ACCOMMODATION

Manage your budget and experience your new city through the eyes of a local by signing up for UWA Hosted Accommodation.

Offering packages that include meals and utilities, homestay is not only affordable, but offers you the chance to make lifelong friendships with a network that includes UWA Alumni and a community of experienced and trained hosts who can help you settle into your new home.

FIND OUT MORE BY HEADING TO THE
ACCOMMODATION CONCIERGE ONLINE HUB
uwa.edu.au/students/concierge



Kickstart Your CAREER NOW

UWA's Careers and Employability Centre can help you recognise your employability skills through creating meaningful experiences.

Our qualified career consultants and workshops will help you to grow your professional network supporting your connections with industry.



Our 'Steps for Career Success' guide will help you make the most of your time at UWA and get ahead of the game. The year-by-year guides you to understand what to do and when.

PERSONALISED CAREER ADVICE

Unsure of your career direction? Our career consultants can help design your career and answer your questions in one-on-one appointments. These are available through Teams and face to face.

CAREERS AND EMPLOYABILITY AWARD

The Award is a self-paced job readiness program, that helps you to develop career management skills, practical experience, employability skills, industry knowledge/labour market awareness and the ability to articulate your skills to employers. This program is free and available remotely for all students. You can start at any time and have until the end of your studies at UWA to complete it.

[Start the Award](#) to enhance your employability skills.

CO-CURRICULAR PROGRAMS

Improve your employability, develop your skills and complement your studies with UWA's range of co-curricular programs.

Check out what's on offer!

uwa.edu.au/students/My-career/co-curricular-programs-and-activities

CAREER TOOLS AND RESOURCES

Access specialised career resources such as:

- [My UniHub](#) - a 24-hour portal for career resources, jobs, and internship opportunities.
- Employability workshops, including resume, cover letter, LinkedIn, job search, selection criteria and interview preparation.
- [VMock](#) for resume and LinkedIn profile reviews, [Big Interview](#) for interview preparation.
- [EMPLOY101 Modules](#) - these modules are designed to help you recognise your employability skills and attributes, plan for your future career/work, learn about the labour market, and develop a careers toolkit (resume, cover letter, LinkedIn, and interview skills)

INDUSTRY OPPORTUNITIES

Connect with UWA's industry partners through:

- On-campus and virtual employer events, fairs and industry seminars.
- [Career Mentor Link](#) - one-on-one mentoring with an industrial professional.

Contact the UWA Careers and Employability Team:

T: +61 8 6488 2258

E: careerscentre@uwa.edu.au

W: uwa.edu.au/students/My-career

facebook.com/UWACareersEmployability

I: instagram.com/uwacareersemployability





UWA

ADVANCE

ADVANCE YOUR CAREER. ADVANCE YOUR SELF.

Through UWA Advance co-curricular activities you'll advance your education beyond the classroom to build life skills, experiences and sought-after attributes that define the UWA graduate. uwa-advance@uwa.edu.au



Community Impact

The Community Impact award recognises students who have supported one or more communities over an extended period.



Digital Capability

Students demonstrate an ability to use or develop ICT technologies in the service of stakeholders including proficiency in deploying one or more digital technologies to deliver solutions.



Global Citizenship

Recognising cultural differences, appreciating the connection between the local and global perspectives, and understanding the benefits of drawing on diverse viewpoints, all attribute to this badge.



Professional Development

Professional Development focuses on improving skills and knowledge through learning and training. There are many independent activities that can be undertaken to receive this badge.



Entrepreneurial and Innovation

Entrepreneurial students can identify opportunities and generate new ideas to create economic or social value including developing problem solving, design thinking, negotiation and leadership skills.



Leadership

This badge recognises students' who have learnt the skill to lead by influencing and supporting others and/or participate in activities in which leadership capabilities are developed.

Freedom of EXPRESSION & ACADEMIC FREEDOM

In Australian universities it is normal for people to discuss opinions that are controversial – neither students nor staff have to agree with the Australian Government.

The University fully supports the right of staff and students to discuss controversial ideas – the only restrictions are those imposed by federal or state laws or regulation authorised by UWA's [Code for the Protection of Freedom of Speech and Academic Freedom](#).

As an accessibility requirement, when linking to a document of any kind we must include in brackets the size of the doc.

You may encounter ideas and opinions from your lecturers or other students that you disagree with or that are in conflict with the policies or extra-territorial laws of your home government. Unless there is a breach of federal or state law, or of UWA's Code, the University will not require staff to change course content, limit the direction of their research or how they report it, or to withdraw or modify statements.

As a UWA student you have the right to:

- Express your opinions
- Disagree with the opinions of others
- Join or leave student clubs

Types of behaviours that may occur, and which UWA does not tolerate, include the following:

- intimidation of staff and students by individual students or staff
- inappropriate actions by foreign student associations operating at UWA
- inappropriate identification of, or sharing of, student or staff details ('doxxing')
- reporting, or threatening to report on, fellow staff or students to foreign government bodies

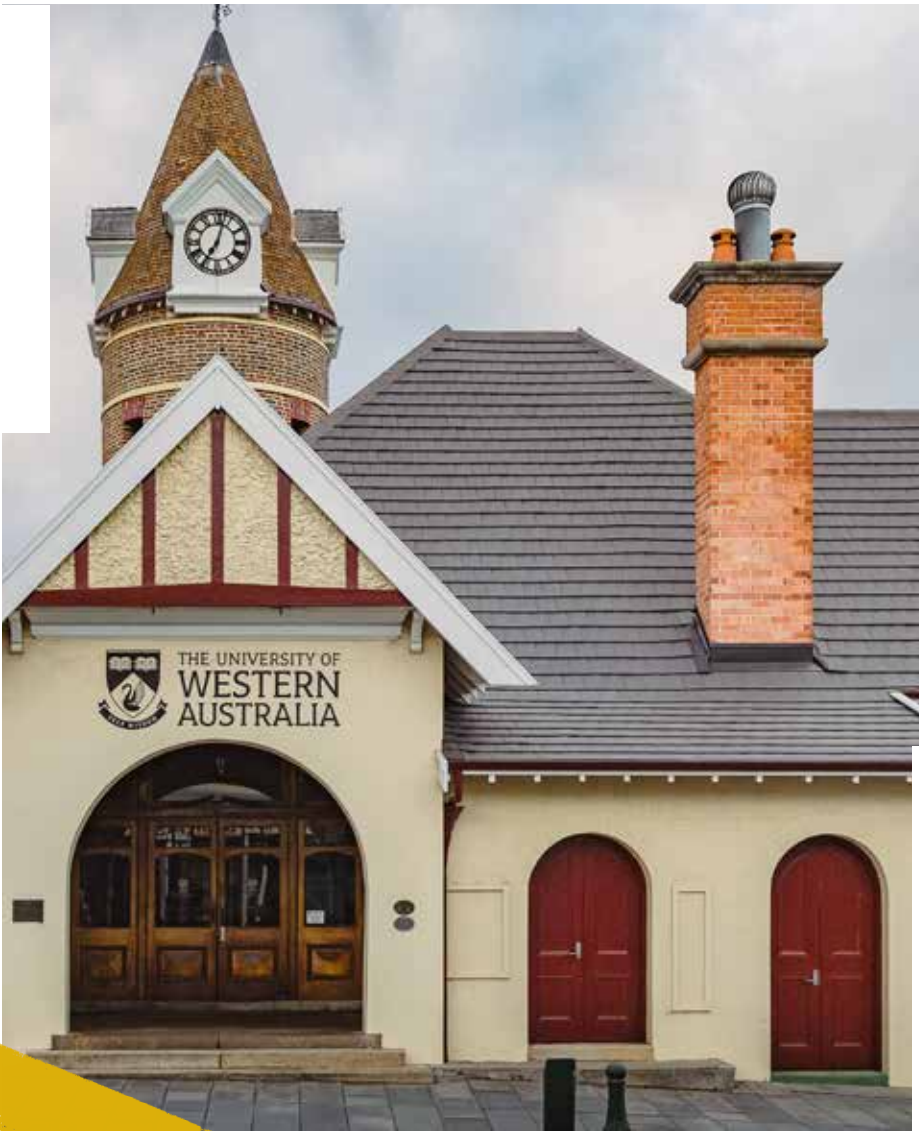
REPORTING FOREIGN INTERFERENCE CONCERNS

If you are concerned about foreign interference on campus, or you are being harassed or pressured, you can discuss your concerns with the **Integrity and Standards Unit** (the ISU) or by emailing foreigninterference@uwa.edu.au



CONTINUE YOUR DEGREE AT
THE UWA ALBANY CAMPUS

Study ALBANY



Enhance your university experience
by spending a semester or more
of your degree in the picturesque
Great Southern region of Western
Australia.

Whether you're completing an undergraduate,
postgraduate or honours degree, you'll enjoy UWA
Albany's friendly, supportive community and unique
learning environment.

The campus is located in the heart of the historic city
of Albany, situated 400km south of Perth on Western
Australia's pristine south coastline. Accessible by
car, bus or plane, the Great Southern is a biodiversity
hotspot, with plenty of opportunities to immerse
yourself in an amazing natural environment, as well as
the cultural and historical heritage of the region.

Find out more or contact the UWA Albany team:
T: +61 8 9842 0888
E: uwa-albany@uwa.edu.au
W: uwa.edu.au/albany/home

Study Abroad

As the world begins to open again,
consider studying overseas

Plan ahead and apply to study abroad or go on
exchange as part of your UWA degree so that
when the world opens up again you'll be ready
to experience studying overseas.

You'll have the opportunity to enjoy the
experience of a lifetime as you immerse
yourself in another culture, improve your career
prospects, enhance your problem-solving and
social skills, and, make new friends with diverse

backgrounds and experiences. Plus, you'll
still be contributing to your studies.

Contact the UWA Global Learning Office:
T: +61 8 6488 8199
E: studyabroad@uwa.edu.au
W: [uwa.edu.au/students/My-course/
Study-overseas](http://uwa.edu.au/students/My-course/Study-overseas)



UWA STUDENT GUILD

The UWA Student Guild exists to make sure you make the most of your degree and have the best university experience possible. It's run by students, so completely understands what you want and need as a UWA student.

GET INVOLVED

- Join one of the Guild's 150+ student clubs or societies
- Roll up your sleeves and volunteer through Guild Volunteering's numerous programs and any hours that are eligible can even be registered on your volunteer transcript

GET SUPPORT

- The Guild's council members, committees and student representatives ensure all students on campus have a voice
- Student Assist can help if you have any academic, welfare or financial issues

GET VALUE

As a Guild member you are offered a range of special discounts and promotions both on and off campus.

Shop, eat or drink at any of the Guild-run locations across campus, including everyone's favourite – The Tav.

Make sure to check out the Guild-run cafés across campus, and explore the many facilities available in the Guild Village including:

[Supermarket](#)
[Bank and ATMs](#)
[Pharmacy](#)
[Optometrist](#)
[Dentist](#)
[Print and copying service](#)
[Shoe repair and key cutting](#)
[Secondhand bookshop](#)

T: +618 6488 2295
E: hello@guild.uwa.edu.au
W: uwastudentguild.com

"University is truly an opportunity to start a new chapter of your life, one that you can shape any way you want."

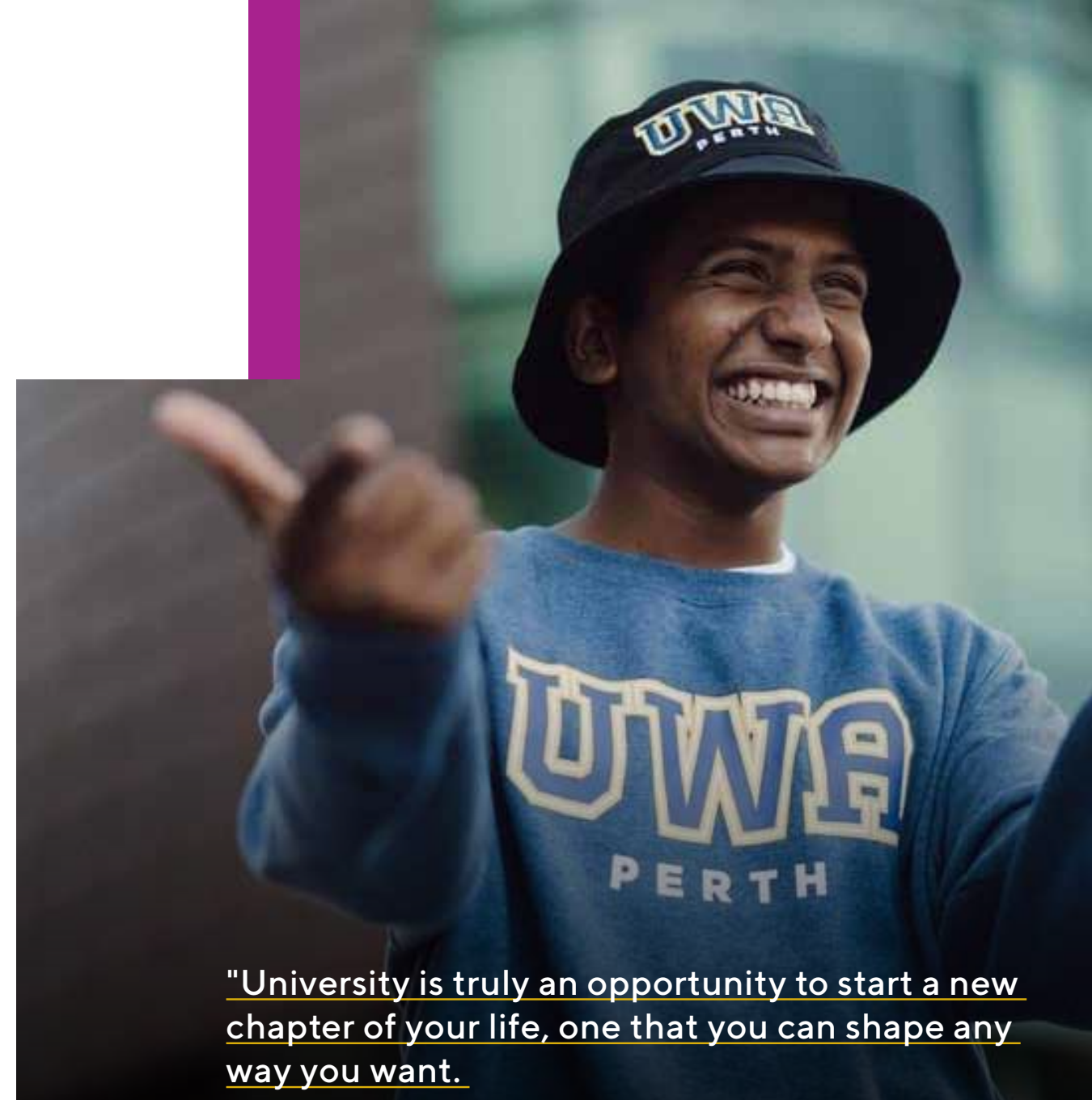
It's your opportunity to be the best version of yourself, the person you've always wanted to be, so don't be scared to step out of your comfort zone and seize every opportunity you can.

Whether it's becoming involved in clubs, the Guild, or UWA Sport, there is literally hundreds of ways to find your people around campus.

Don't be afraid to fail, to create memories, to embrace challenges and most importantly – have fun! Now is the time to be excited, because if you're willing, university will open doors to the rest of your life."

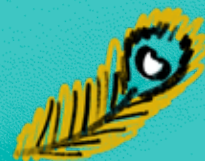
110th Guild President

GEEMAL JAYAWICKRAMA



My
MISSION in life
is not merely
TO SURVIVE
but to
THRIVE

MAYA ANGELOU



Safety & **SECURITY** ON CAMPUS

Stay safe
on campus

Download
the SafeZone
app today!



UWA provides a 24-hour security service to ensure your safety. This service is available seven days a week and keeps campus a safe environment for everyone.

SAFEZONE APP

With the simple press of a button, you'll be connected directly with UWA Security if you ever need help on campus.

You can get first aid or emergency help, check-in to buildings if you're studying late, or report an anonymous incident if something doesn't look right. Plus use the campus map to help you get around.

Download it for free today at
security.uwa.edu.au/security-on-campus

- Never leave your personal belongings (such as bags, wallets, laptops, bikes) unattended – this includes in libraries, cafés and other University buildings or outside. (Cars parked on campus are not covered by University insurance.)
- Keep your personal details secure, including passwords, Campus Card, bank cards, Tax File Number and passport.
- Take responsibility for your personal safety – walk in well-lit areas with a friend or crowd; wait for buses in open populated areas; phone a taxi instead of hailing, wait with a friend and record the taxi number.

Security Escort Service

T: +61 8 6488 3020
SMS: 0438 739 744

UWA Security(Emergencies)

T: +61 8 6488 2222
W: security.uwa.edu.au

SCAMS AND FRAUD

The best way to protect yourself from scams is to know what to look out for, and what to do if you receive a suspicious message.

This could include:

- being contacted and asked for personal information
- receiving an 'urgent' text message, email or phone call asking you to take action
- a call, email or text from someone who claims to be from a reputable organisation but who asks you for money or secure personal details
- any communication with bad spelling, an unusual sender name or email address

For more information, refer to the Australian Government's information on protecting yourself from scams.

Important contact details FOR UWA STUDENTS

KEY UWA CONTACTS

UWA Security Emergency +61 8 6488 2222	Pharmacy (on campus) +61 8 6488 2290
Alcohol & Drug Counselling +61 6488 2118	Physio (on campus) +61 8 6488 2118
Careers & Employability Centre careers.uwa.edu.au	Student Admin +61 8 6488 3235
Accessibility services (UniAccess) +61 8 6488 4630	Remote study resources uwa.edu.au/students/virtual-campus
Financial support (Guild Student Assist) +61 8 6488 2292	Security Escort Service +61 8 6488 2222
Global Learning Office +61 8 6488 8199	Study Support (STUDYSmarter) studysmarter.uwa.edu.au
Health Promotion Unit +61 8 6488 3173 uwa.edu.au/students/Campus-life/Volunteering/Health-Promotions	UWA Accommodation +61 8 9488 0500 uwa.edu.au/accommodation
International Student Support +61 8 6488 7478	UniAccess E: uniaccess@uwa.edu.au uwa.edu.au/students/study-success/uniaccess
Manage My Emotions program +61 8 6488 2644	UWA Counselling & Psychology +61 8 6488 2423 uwa.edu.au/students/Support-services/Mental-health-and-wellbeing
Health and Medical Services +61 8 6488 2118	UWA Library +61 8 6488 1255 uwa.edu.au/library
Orientation & Transition team +61 8 6488 7130	UWA Sport +61 8 6488 2286 sport.uwa.edu.au
Overseas Student Health Cover (OSHC) +61 3 9862 1095	UWA Student Guild +61 8 6488 2295 uwastudentguild.com



YOUR ONE-STOP SHOP FOR ORIENTATION OR COURSE ADVICE

Student Offices

Make sure you get to know your Student Advisers – their job is to help you create an amazing university experience. Your allocated Student Advising Office can assist with any questions you have related to your studies, including:

- study plans and enrolment help
- general advice about University life
- referrals to other relevant support services available for you throughout your studies.

Not sure what your allocated Student Advising Office is? You'll find it listed on the [studentConnect](#) homepage.

Contact your Student Advisers via [askUWA](#) or telephone, or make an appointment to chat to us in-person or online.

W: uwa.edu.au/students/contact
E: askUWA

UWA Transition Team

We have a team of dedicated UWA advisers and student mentors (via our UniMentor program) that can provide advice and help connect you to other services the University offers. Our advisers are passionate about ensuring you feel at home at UWA.

Call or email us, or make an appointment to have a chat about:

- Juggling your studies and balancing commitments
- Help with your study load and managing priorities
- Meeting people on campus or via social events and excursions
- Timetabling help
- Advice on settling into Perth and UWA
- Referrals to services
- UniMentor Program
- Orientation and transitioning to uni life

T: +61 8 6488 7130
E: askUWA
W: uwa.edu.au/students/getting-started/new-students

#uwastudents



UWAsstudents



UWA_students



uwastudents



universitywa



uwastudents



THE UNIVERSITY OF
**WESTERN
AUSTRALIA**

Contact Us

Student Central

Tel: 131 UWA or +61 8 6488 7478

Email: askUWA

CRICOS Provider Code: 00126G