

2021 Examination Timetable in WA

Examination Cancellations and Withdrawals

No refund is given for general cancellations or withdrawals, or for candidates not presenting for scheduled examinations.

Examination Transfers

Transfers are not an automatic right. They are subject to availability of time, examiner and venue.

Transfers may only be considered when at least 48 hours advance notice is given to the office of candidates being unable to attend scheduled exams, and upon payment of a transfer fee.

Transfers from one calendar year to the next are not possible.

Examination Cancellations, Withdrawals and Transfers on Medical Grounds

A current medical certificate is required and should be received by the office within 5 working days of the scheduled exam date. Financial consideration may be offered in the form of a credit note or transfer fee. Please contact the office to discuss.

Complaints

All complaints must be lodged in writing, addressed to the State Manager, anne.winterton@uwa.edu.au and should include a copy of the report form.

Service Charges – GST inclusive

Late Fee (single candidate):	\$50 per candidate
Late Fee (3 to 5 candidates):	\$115
Transfers:	\$55
Amendments:	\$15
Duplicate Notice:	\$5
Duplicate Report or Certificate:	\$25
Searches (past results):	before 1992: Contact WA office
	1992 and after: \$25
Statement of passes:	\$25 + Search Fee
Re-mark written paper:	50% of Enrolment Fee
Enrolment Forms processed by the Office:	\$10 per form

AMEB Manuals of Syllabuses – Music and Speech

For further information on how to purchase these Manuals or individual instrument syllabuses, together with the costs involved, please visit the Federal Office website at ameb.edu.au/shop

Please note

This document, together with the 2021 *Manual of Syllabuses*, forms part of the examining procedures. Teachers are therefore asked to ensure that parents and candidates are fully aware of the information contained herein.

2021 Examination Enrolments in Western Australia Enrolments

The enrolment details you provide will appear on all AMEB documentation including the certificate. It is the responsibility of the account holder to check that all the following are correct:

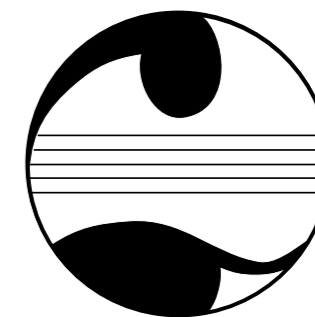
Personal details
Examination details

- Indicate New (N) or Old (O) syllabus where applicable.
- Preferred week for examination – Week number only (specific days/dates/times entered in place of a week number will not be accepted).

Teachers must, when enrolling candidates, ensure that they are available any time in the selected week, including Sunday. Requests cannot be guaranteed. Transfer fees remain the responsibility of the account holder.

Late Enrolments

Enrolments submitted after the published closing date may be accepted subject to space availability and payment of the late fee.



Australian

Music

Examinations

Board (WA)

State Office (Perth)

Mailing Address:

AMEB (WA),
M421, 35 Stirling Hwy, CRAWLEY WA 6009

Tel: (08) 6488 3059

Email: amebwa@uwa.edu.au

Internet: ameb.uwa.edu.au

Online enrolments: wa.ameb.edu.au

Location:

Building 1, UWA Claremont Campus,
Cnr Princess and Goldsworthy Roads, Claremont

OFFICE HOURS

Monday to Friday

9am to 1pm and 2pm to 4.30pm

FEES 2021

MUSIC

Practical Grade Examinations		Theory of Music syllabus	
GST incl.		GST incl.	
P Plate Piano (Books 1, 2 and 3 each)	\$50	Musicianship and Music Craft fees – please refer to WA website	
Preliminary	\$100	First	\$75
First	\$105	Second	\$78
Second	\$115	Third	\$82
Third	\$120	Fourth	\$88
Fourth	\$125	Fifth	\$94
Fifth	\$135	Sixth	\$98
Sixth	\$145		
Seventh	\$160		
Eighth	\$180		
Certificate of Performance	\$200		
Associate Diploma	\$330	Associate Papers (1, 2 and 3 each)	\$140
Licentiate Diploma	\$450	Licentiate Papers (1, 2 and 3 each)	\$180

FOR TEACHING, INDUCTION TESTS, PERFORMANCE EVALUATION AND ROCKSCHOOL INFORMATION, INCLUDING FEES, PLEASE VISIT AMEB.UWA.EDU.AU

SPEECH

Speech and Performance		Voice and Communication (per candidate)	
GST incl.		GST incl.	
Preliminary	\$90	Preliminary	\$90
First	\$100	First	\$90
Second	\$105	Second	\$90
Third	\$110	Third	\$105
Fourth	\$115	Fourth	\$110
Fifth	\$115	Fifth	\$115
Sixth	\$125	Sixth	\$120
Seventh	\$125	Seventh	\$125
Eighth	\$135	Eighth	\$135
Certificate	\$170	CVCA	\$165
Associate (ASPA) Diploma	\$305	AVCA section I	\$260
Associate Written	\$140	AVCA section II	\$145
Licentiate (LSPA) Diploma	\$355		
Licentiate Written	\$135		

Speech and Performance		Drama and Communication (per group)	
GST incl.		GST incl.	
First	\$75	Introductory	\$150
Second	\$80	First	\$160
Third	\$80	Second	\$170
Fourth	\$85	Third	\$180
Fifth	\$90	Fourth	\$190
Sixth	\$90	Fifth	\$210
Seventh	\$110	Sixth	\$230

ALL FEES ARE GST INCLUSIVE

2021 AMEB (WA) Examination Timetable

Pianoforte and Piano for Leisure examinations will be conducted every week, *except* Week 49. All instrument, voice and speech examinations will be conducted during the weeks indicated below.

April ENROLMENTS CLOSE 1 MARCH	May ENROLMENTS CLOSE 1 APRIL	June ENROLMENTS CLOSE 1 MAY	July ENROLMENTS CLOSE 1 JUNE	August ENROLMENTS CLOSE 1 JULY	September ENROLMENTS CLOSE 1 AUGUST	October ENROLMENTS CLOSE 18 AUGUST	November ENROLMENTS CLOSE 15 SEPTEMBER
Week 15 * A	Week 20	Week 25	Week 29	Week 33	Week 38	Week 42	Week 46
29 March – 4 April No Exams on Good Friday or Easter Sunday Brass Clarinet, Saxophone <i>*Split Week</i>	3 – 9 May Speech Voice	7 – 13 June No Exams on Monday WA Day Holiday Flute	5 – 11 July School Holidays Flute, Recorder Harp	2 – 8 August Classical Guitar Brass	6 – 12 September Classical Guitar Brass and Kalgoorlie Exams^g	4 – 10 October School Holidays Harp, Flute	1 – 7 November Speech Flute Violoncello
Week 16	Week 21	Week 26	Week 30	Week 34	Week 39	Week 43	Week 47
5 – 11 April No Exams University closed School Holidays	10 – 16 May Violin, Viola Violoncello Double Bass	14 – 20 June Voice Brass	12 – 18 July School Holidays Clarinet, Saxophone	9 – 15 August Flute, Rockschoo and Esperance Exams^g	13 – 19 September Speech, Flute Recorder and Port Hedland Exams^g	11 – 17 October Oboe, Bassoon Violin, Viola	8 – 14 November Speech, Violin, Viola Rockschoo
Week 17 A	Week 22	Week 27 A	Week 31	Week 35	Week 40	Week 44	Week 48
12 – 18 April School Holidays Violin, Viola	17 – 23 May Classical Guitar	21 – 27 June Violin, Viola	19 – 25 July Speech, Voice	16 – 22 August Voice Speech Written Exams ^h and Albany Exams^g	20 – 26 September Violin, Viola Violoncello Double Bass	18 – 24 October Speech Classical Guitar Clarinet, Saxophone	15 – 21 November and Albany Exams^g
Week 18	Week 23	Week 28 *	Week 32 *	Week 36	Week 41 *	Week 45 *	Week 49 A
19 – 25 April Flute, Recorder Brass	24 – 30 May Clarinet, Saxophone Oboe, Bassoon	28 June – 4 July Classical Guitar <i>*Split Week</i>	26 July – 1 August Violin, Viola Violoncello <i>*Split Week</i>	23 – 29 August Violin, Viola, Violoncello and Geraldton Exams^g	27 September – 3 October No Exams on Monday Queen's Birthday Holiday School Holidays Voice <i>*Split Week</i>	25 – 31 October Speech, Voice Brass and Bunbury Exams^g	22 – 28 November No piano examinations AMusA examinations only
Week 19 *	Week 24 *	Country Exams[#] Subject to sufficient enrolments Closing dates as for metropolitan exams		Week 37 * A		Enrolments for October exams close 18 August 2021	Enrolments for November exams close 15 September 2021
26 April – 2 May No Exams on Monday Anzac Day Holiday and Bunbury Exams^g <i>*Split Week</i>	31 May – 6 June Rockschoo <i>*Split Week</i>			30 August – 5 September Clarinet, Saxophone Oboe, Bassoon and Bunbury Exams^g <i>*Split Week</i>			

Week Numbers

THE WEEK NUMBERS SHOWN ABOVE DO NOT CORRELATE WITH CALENDAR, SCHOOL OR UNIVERSITY TERM WEEKS. PLEASE USE THE WEEK NUMBERS EXACTLY AS THEY APPEAR IN THIS TIMETABLE.

A SPLIT WEEK EG WEEK 19 (26 APRIL – 2 MAY) IS DEEMED TO BELONG TO THE EARLIER MONTH, IE APRIL, SO THE CLOSING DATE FOR APRIL ENROLMENTS WILL APPLY.

Rockschoo

THE AMEB IS RESPONSIBLE FOR CONDUCTING ROCKSCHOOL EXAMINATIONS IN AUSTRALIA. PLEASE REFER TO ROCKSCHOOL.AMEB.EDU.AU FOR FURTHER INFORMATION.

Speech

Written Examinations – August 2021^h

ONLY FOR GRADES THAT ARE NOT AVAILABLE ONLINE. ENROLMENTS CLOSE FRIDAY 28 MAY 2021. REFER TO THE 2021 MANUAL OF SYLLABUSES FOR DATES/TIMES WITHIN THE WEEK.

Associate Diplomas

- MUSIC (AMUSA) WILL BE HELD DURING THE WEEKS MARKED WITH 'A' ABOVE.
- SPEECH (ASPA) WILL BE HELD DURING WEEKS ALLOCATED TO SPEECH EXAMINATIONS.

Federal Diploma Exams

LMusA and FMusA

CLOSING DATE: FRIDAY 28 MAY 2021

ONE SESSION OF EXAMS WILL BE HELD IN LATE SEPTEMBER OR EARLY OCTOBER. CONTACT STATE OFFICE FOR FURTHER DETAILS.

Please note:

- THIS EXAMINATION TIMETABLE, TOGETHER WITH THE 2021 MANUALS OF SYLLABUSES, FORMS PART OF THE EXAMINING PROCEDURES. TEACHERS ARE THEREFORE ASKED TO ENSURE THAT PARENTS AND CANDIDATES ARE FULLY AWARE OF THE INFORMATION CONTAINED THEREIN.
- PLEASE ENROL AND PAY ONLINE THROUGH SCORE AT WA.AMEB.EDU.AU PAPER ENROLMENT FORMS MAY BE OBTAINED FROM AND SUBMITTED THROUGH THE WA STATE OFFICE, BUT PLEASE NOTE THAT A FEE MAY BE CHARGED FOR ANY ENROLMENTS PROCESSED BY THE OFFICE.
- THE ENROLMENT DETAILS WILL APPEAR ON ALL AMEB DOCUMENTATION, INCLUDING THE CERTIFICATE. IT IS THE RESPONSIBILITY OF THE ACCOUNT HOLDER TO CHECK THAT ALL DETAILS ARE CORRECT.
- WHEN YOU HAVE PRINTED THE NOTICE OF EXAMINATION, PLEASE CHECK IT CAREFULLY. IF ANY PERSONAL DETAILS ARE INCORRECT, PLEASE GO INTO SCORE AND CORRECT THEM. IF DETAILS RELATING TO THE EXAMINATION ARE INCORRECT, PLEASE CONTACT THE WA STATE OFFICE. CERTAIN AMENDMENTS MAY INCUR A SERVICE CHARGE AS OUTLINED IN THE TABLE OF FEES (SEE OVER).
- TEACHERS MUST, WHEN ENROLLING CANDIDATES, ENSURE THAT THEY ARE AVAILABLE ANY TIME IN THE SELECTED WEEK, INCLUDING SATURDAY AND SUNDAY. REQUESTS WILL BE CONSIDERED BUT THERE IS NO GUARANTEE THAT THEY CAN OR WILL BE MET.
- TO COMPLY WITH INDUSTRY STANDARDS AND EXPECTATIONS REGARDING CHILD PROTECTION, PLEASE NOTE THAT CCTV CAMERAS WILL RECORD EXAMINATIONS (VISUAL ONLY) ON THE CLAREMONT CAMPUS.