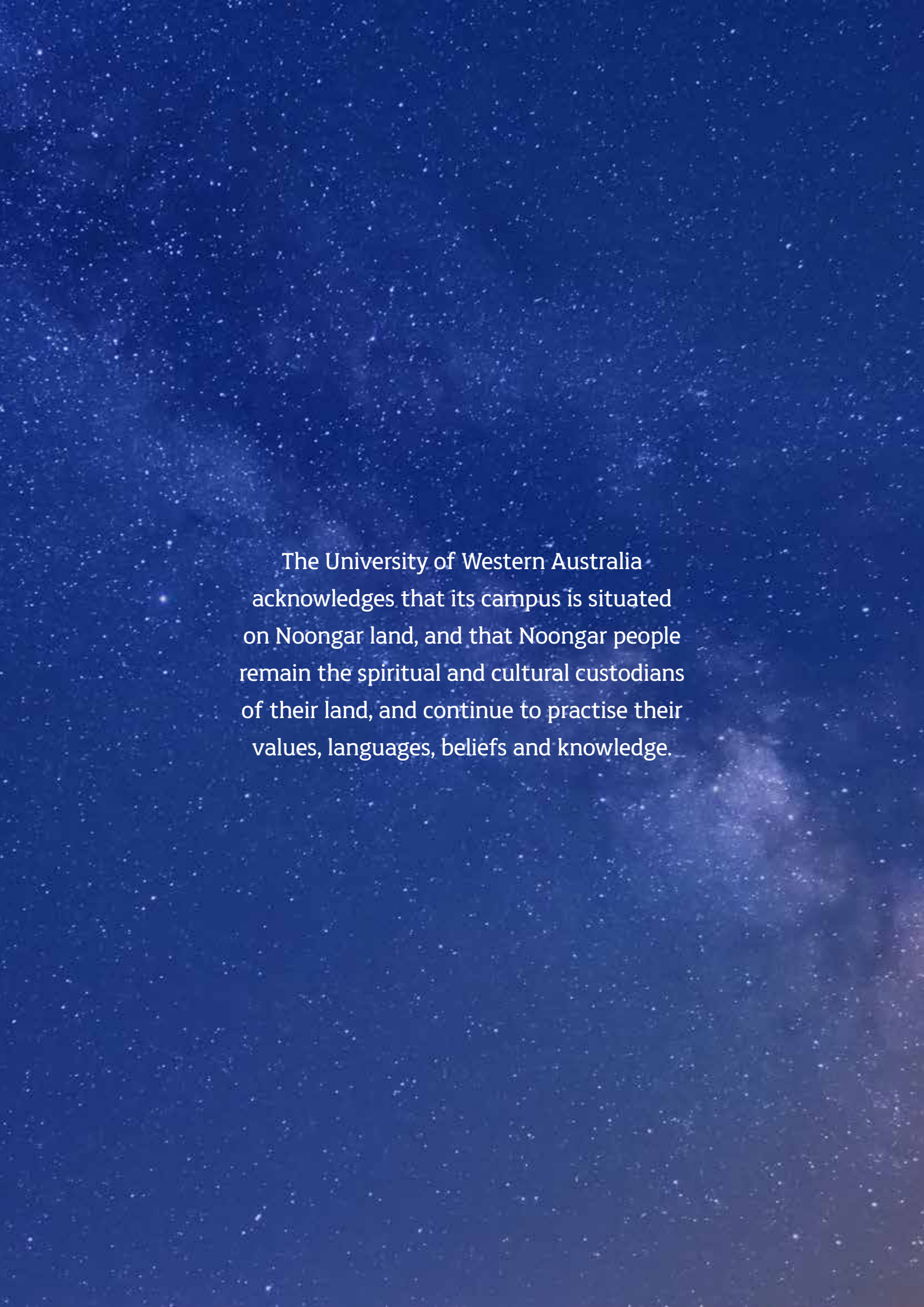




University Theatres





The University of Western Australia
acknowledges that its campus is situated
on Noongar land, and that Noongar people
remain the spiritual and cultural custodians
of their land, and continue to practise their
values, languages, beliefs and knowledge.

Contents

About Us

The Crawley Campus	4
Your event at UWA.....	4
Which venue?	5
What will it cost?	5
How are charges calculated?	7

Working With Us

Other facilities.....	8
How we work with you.....	9
Ticketing	9

Winthrop Hall

The Undercroft.....	18
---------------------	----

“The University Theatres team was lovely to deal with and super helpful. The venue was conveniently located and easily accessible for our guests, making the evening even more enjoyable.

“We will definitely be coming back soon.”

Mecca Brands



The Crawley Campus

The University's main campus is full of beautiful buildings, ancient trees and brimming with wildlife. All our venues are in the heart of this historic and magical place.

Your guests' event experience will be unforgettable.

Right by Matilda Bay on the Derbarl Yerrigan (Swan River), there is nowhere in Australia quite like it.

Your event at UWA

Thank you for considering the venues of the University of Western Australia for your event. For over 80 years the University has played a pivotal role in Perth's cultural life. This has led to an unparalleled range of venues and services to suit all needs.

This document describes our theatres and performance spaces. In addition:

The University Club of Western Australia offers high-quality conference and event facilities with award-winning cuisine.

The University also offers hundreds of flexible spaces, lecture theatres, seminar and meeting rooms.

Our team will work with you to identify the most suitable venues.

Which venue?

With so many options, choosing the right venue is important and every venue has its strengths. Your event is unique, and we encourage you to talk to us about your needs. This guide suggests where to start:

	The Octagon Theatre	Winthrop Hall	The Undercroft	The Dolphin Theatre	The Somerville Auditorium	The New Fortune Theatre	The Sunken Garden	The Tropical Grove		The University Club of WA	Teaching spaces
Theatre	✓			✓		✓					
Dance	✓			✓							
Acoustic music	✓	✓		✓	✓	✓					
Amplified music	✓			✓	✓		✓	✓			
Film screening	✓										✓
Graduation	✓	✓		✓							
Conference	✓	✓		✓						✓	✓
Break out space			✓							✓	✓
Presentation	✓	✓	✓	✓						✓	✓
Exhibition		✓	✓							✓	
Banqueting		✓								✓	
Wedding					✓		✓	✓		✓	
Wedding reception					✓		✓			✓	
Cocktail function		✓			✓		✓	✓		✓	



What will it cost?

Every event is different and that’s why we provide personalised estimates so you can plan with confidence. But you need to start somewhere. These all-inclusive, indicative hiring costs are only a guide. As staffing can vary with audience size, these indicative costs assume full theatres. We will help you fix the important details to find the most efficient way for your event to run.

The Octagon Theatre	Stand-up comedy/ presentation	One night	\$5,000 +GST
The Octagon Theatre	Live music	One night	\$9,000 +GST
The Octagon Theatre	Day conference	One day	\$7,000 +GST
Winthrop Hall	School graduation	One night	\$7,500 +GST
Winthrop Hall	Banquet for 400	One night	\$7,000 +GST
The Dolphin Theatre	Talking head	One night	\$3,000 +GST
The Dolphin Theatre	Thu-Sat theatre show	One week	\$13,000 +GST

Events in our open-air spaces are too bespoke to offer indicative costings.

Contact our experienced and friendly Bookings Team on +61 (8) 6488 7407 or on bookings-theatres@uwa.edu.au to discuss your needs.

How are charges calculated?

Every component of your event is itemised in your estimate. You can be confident that you are only paying for services you are using.

Lighting

Indoor venues have house lighting and theatrical lighting. Theatrical lighting is charged by the day and includes globes and gel for the standard rig, but does not include staffing. If your event is more sophisticated we can also provide a lighting design. More complex lighting requires more rigging, focussing and plotting time, which is determined in collaboration with us. Open-air venues typically have limited lighting.

Sound

Each indoor venue has its own sound system, tailored to that venue's needs. The system is charged by the day and does not include staffing. More sophisticated events may require a sound design. Ambitious sound designs require more technician time, which is determined in collaboration with us.

Open-air venues typically have no fixed audio facilities and we install systems as required.

Service charges

Service charges represent the cost of managing and delivering light, heat, power, air conditioning and other venue systems. They are calculated by the hour. You can minimise service charges by reducing the length of your event.

Staffing

Our staff are required to manage our venues, both Front of House and backstage. Staffing levels and timings are set by us for the safety of cast, crew and public, and to ensure professional presentation. Our staff are paid under the terms of the *Live Performance Award*.

Front of House & Box Office Staffing: A University Theatres Front of House Manager is present whilst the public are in the venue. This is a requirement of our venue licence with the City of Perth. Additional paid ushers are required according to the needs of the venue and the event.

Technical Staffing: A minimum of one Head Technician is required for each technical area in operation (lighting, audio, stage, etc).

Ticketing

All ticketing is provided through *ticketsWA.com*, our online, flexible and low-cost ticketing system. Unlike some ticketing services, ticketsWA is backed up with daytime patron phone support.

Services

Many other services are provided and will appear, itemised, in your final reconciliation. They include:

Equipment hires: Equipment can be hired through us as we have industry relationships to reduce cost.

Merchandise sales: We sell your merchandise during your event, with a 10% facility fee.

Internet: Wireless connectivity can be provided if requested in good time.

Printing: Small amounts of colour photocopying/printing can be provided.

Cleaning: We always estimate for cleaning. Additional reactive cleaning may also be required.

Marketing: We offer support in promoting your show to the Perth market through a variety of channels including social, email, print media and the UWA community. Many of these are complimentary, some are charged for.

Other Facilities

Bars

The Octagon Theatre, Winthrop Hall, Dolphin Theatre, New Fortune Theatre and Somerville Auditorium are fully licenced. University Theatres runs bars in these venues as part of the patron experience.

The University Club of Western Australia

Any ticket-holder to an event in our venues is automatically a day-member of the prestigious University Club of Western Australia. The University Club offers a Café and Bar and an award-winning restaurant for fine dining. The University Club is a minute's walk from the theatres and is an excellent choice for pre- and post-show VIP functions.

University Rooms

Many events in our venues require break-out spaces and the University can offer rooms and lecture spaces of all capacities, up to 350.

Parking

Every day after 5pm, and all day at weekends, parking is free. Out of semester there is additional free parking.

How we work with you

- Step 1 Our Bookings Team discuss with you your event and make a pencil booking. If we receive another request for your dates you will have first option to confirm your booking.
- Step 2 We provide you a detailed estimate of all charges. Its accuracy depends on the information you give us. The detail in the estimate helps you shape your event to reduce cost further.
- Step 3 You confirm your booking with a deposit.
- Step 4 Nearer the event we need schedules and technical details. Our professional staff guide you through this.
- Step 5 After your event we confirm the actual costs in the final reconciliation.

ticketsWA.com

No online booking charges
or call 6488 2440 (noon-4pm weekdays)

Ticketing

ticketsWA is a simple-to-understand service, paired with a powerful system and helpful staff to answer your queries. There are many features of ticketsWA, including:

Simple pricing

We charge a fixed price for each ticket sold. Our credit card charges to you are exactly what we are charged. Our system gives you complete predictability for you to budget your event with confidence.

Interactive seat maps

Even the most complex venue can be represented on screen and give your patrons a detailed understanding of exactly which seats they're buying.

Powerful marketing tools

Amongst the many options available to you are promotional codes, subscription ticketing and a range of ways to collect valuable information about your patrons. ticketsWA also maintains a social media presence.

Easy reporting

Live access to sales data and a range of sales and performance reports so you can track your progress quickly and easily anywhere, anytime.

No fuss

We look after all of your event ticketing, from building your events on our system and creating your webpage to managing all patron enquiries.



Winthrop Hall

The jewel in the University of Western Australia's crown, Winthrop Hall is WA's premier ceremonial space. Since 1932, Winthrop Hall has presented artists of the highest calibre and welcomed many Prime Ministers, Presidents and Heads of State, including Her Majesty the Queen.

The cathedral-like venue welcomes patrons with a marble and mosaic foyer and vaulted ceilings. Winthrop Hall's bright acoustic is ideal for choral and classical music with the added option of a more intimate recital mode. It is also a superb venue for formal dinners and functions.

Beneath Winthrop Hall is the Undercroft and outside is the elegant Whitfeld Court – both excellent function venues.

Maximum capacity: 974

Recital capacity: 674

Dinner capacity: 420





Venue features

Air-conditioned.

Modular stage extensions for large orchestras of up to 140 musicians.

The Kawai 9' concert grand piano is one of the finest instruments in Western Australia.

Choir-style fixed raking for up to 150 people. Stage extensions raise choir capacity to 300.

Sophisticated Meyer PA suitable for spoken word amplification.

McGillivray pipe organ available for trained organists. The console can be played either onstage or off.

Gallery at rear of Hall seating 78.

Suspension points in a variety of locations for custom lighting, audio and AV.

One complimentary parking bay at the rear of the Octagon Theatre.

Additional bays may be reserved closer to the Hall after hours, subject to availability.

60 music stands and 60 orchestra chairs.

Licensed bar.

Immediately above the Undercroft, which provides substantial space for performers, food preparation or functions.

Accessibility

Patrons may use a lift from ground level to all public levels of the building.

Accessible toilet.

There is a wheelchair lift from Hall floor level to stage level.

"My heartfelt congratulations to you and your team. The service that was afforded each and every supplier last night for the event was exceptional. Every single person we came in contact with was helpful, friendly and really patient!"

"I loved how everyone was so engaged and interested in the event. You provided the perfect location and ambience to a very special evening."

Phenomenon Creative Events

Technical specifications

Stage

Standard stage:	18m wide, 3.9m deep. (This retains full-width steps to stage.)
with 1st extension:	18m wide, 5.5m deep
with 2nd extension:	18m wide, 5.9m deep
with 3rd extension:	18m wide, 6.5m deep
with 4th extension:	18m wide, 7.5m deep

Lighting

The standard lighting is a white stage wash. The Hall cannot be blacked out.

Audio

Control	Allen & Heath QU-SB mixer (16 input/ 8 output)
Channels	Shure ULDX Wireless Receiver 4 Channel Rack with 2 paddle antennas for full stage coverage. Expandable to 6 channels.
PA	Meyer Galileo 408 Loudspeaker Management System with Individual control over front of house and delays 8 x Meyer UPJ front of house system and delays 4 x Meyer UPM onstage
Microphones	A variety of corded microphones, Shure wireless microphones and JTS headset microphones

AV

The Hall can host a variety of AV installations: ground-supported rear or front projection screens and ground-supported or suspended LED screens.

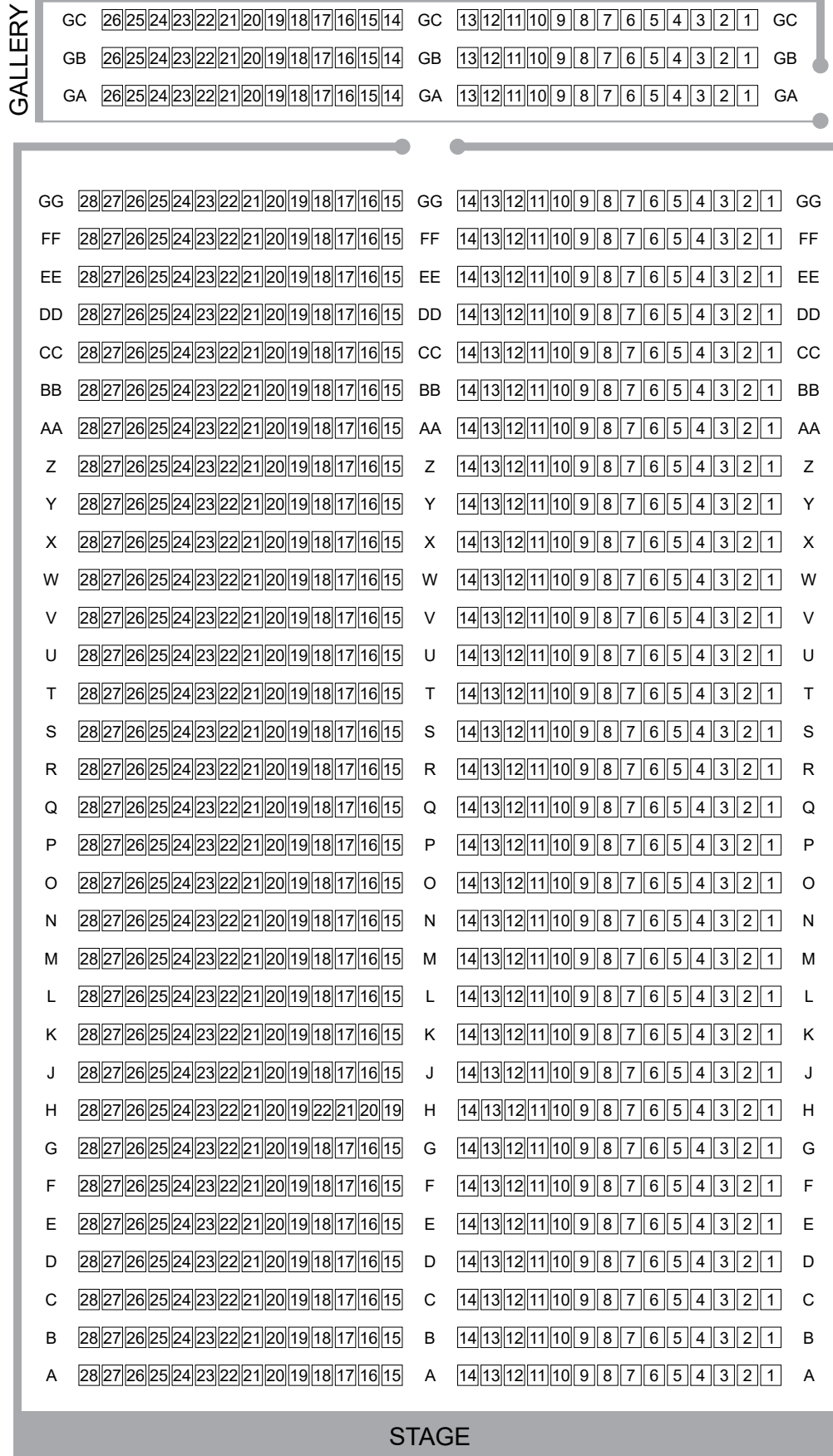


WINTHROP HALL

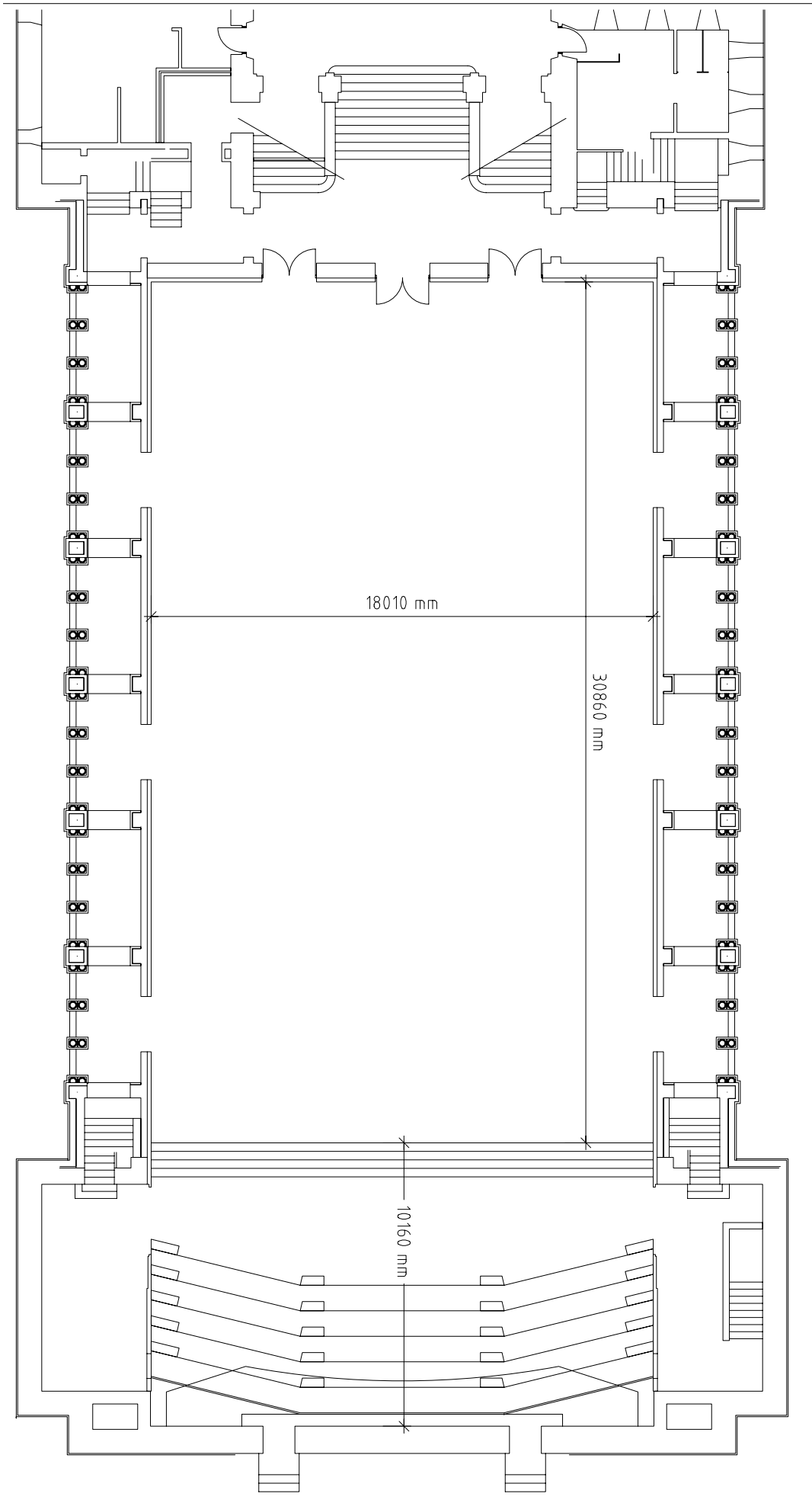
Format: Standard Stage

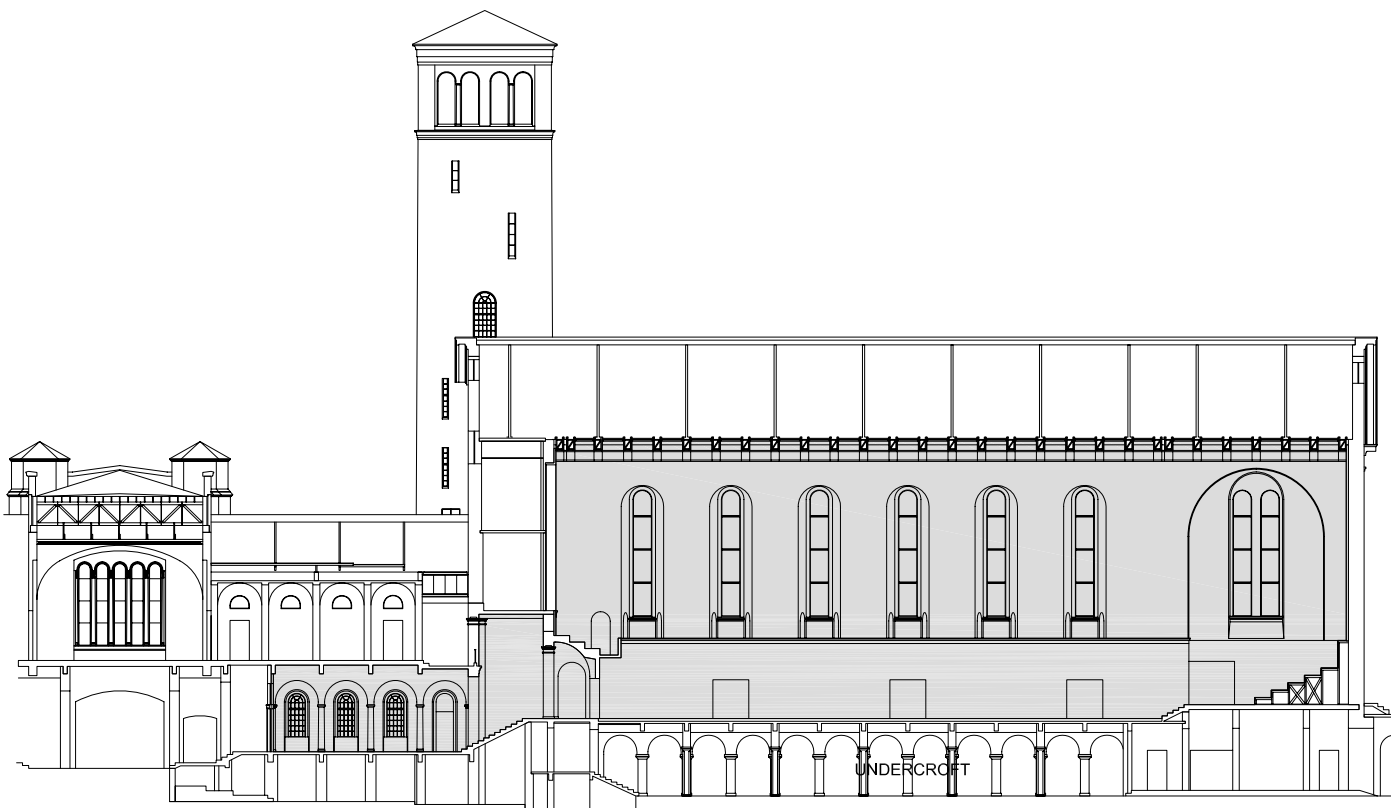
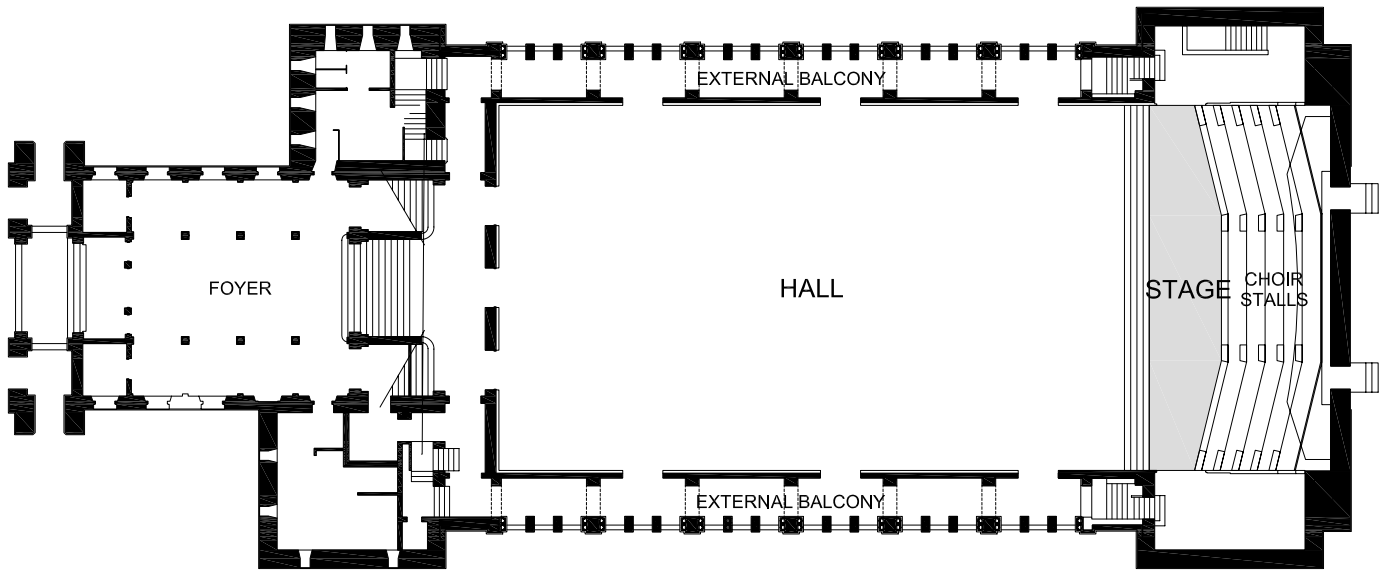
Capacity *excluding* Gallery: 896

Capacity *including* Gallery: 974



Not to scale







The Undercroft

Originally a true undercroft, open to the elements, the Undercroft is a glassed-in function space in the heart of the University's historic campus.

Located directly beneath Winthrop Hall, it is a flexible space suitable for functions, banquet food preparation, exhibitions, expos, lectures, break out and workshops.

Patrons in the Undercroft can naturally flow northwards out to Whitfeld Court and promenade on the manicured lawns surrounding the Reflection Pond or southwards onto Great Court North towards the Tropical Grove.

Standing capacity: 500

Seated capacity: 200

Venue features

Motorised blinds on all sides allow for privacy and for control of how much sunlight can enter.

Immediately below Winthrop Hall and adjacent to Whitfeld Court and Great Court North.

Trestle tables and up to 200 locking chairs.

Floor-sunk power at multiple locations across the floor.

Accessibility

Patrons enter at ground level with no steps.

Accessible toilet.

Technical specifications

Dimensions 27m x 17.5m

Ceiling clearance 3.3m



