



THE UNIVERSITY OF  
**WESTERN  
AUSTRALIA**



Domestic  
Undergraduate

## Mini Course Guide

GET CAREER-READY WITH A UWA DEGREE

**Seek Wisdom**

# Welcome to our community



**Professor Amit Chakma**  
Vice-Chancellor

We're delighted you are considering embarking on the next stage of your education journey with us.

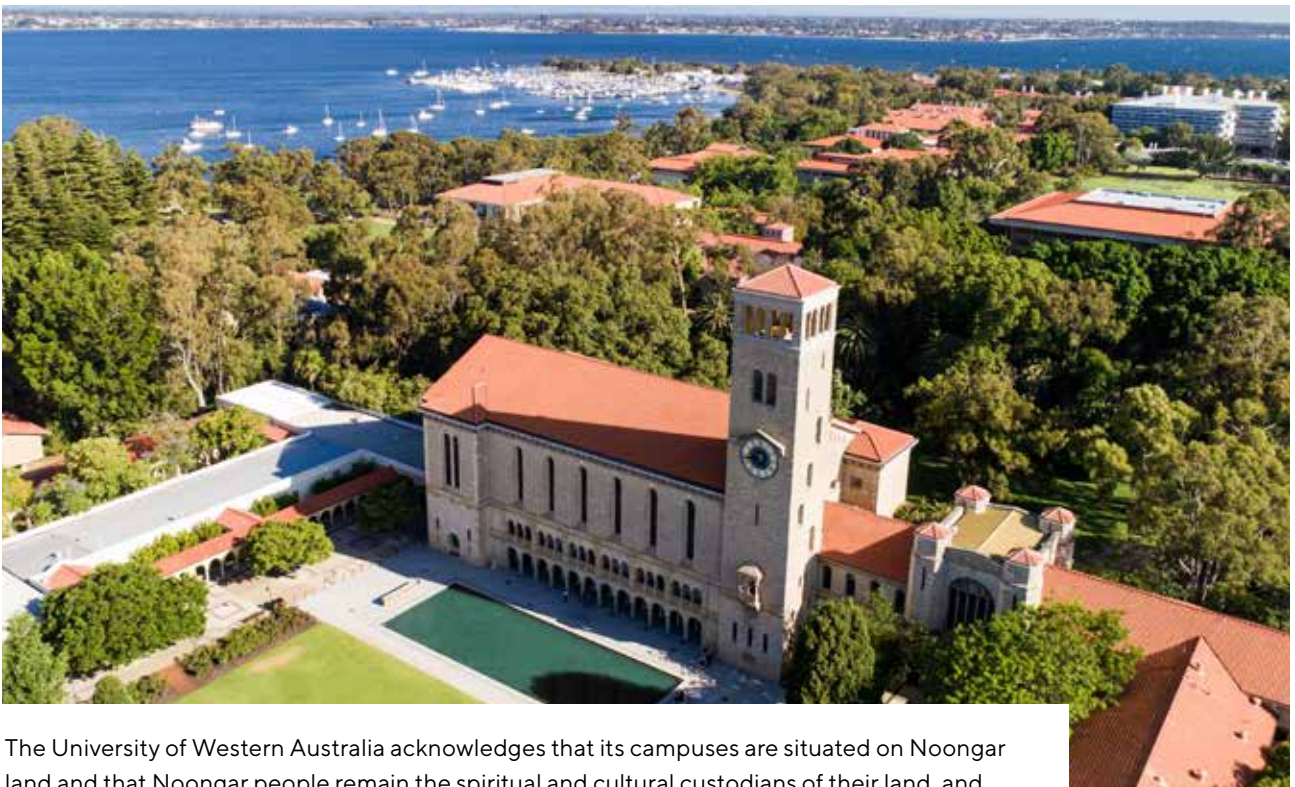
At UWA, our role is to give you the knowledge and skills so that you can achieve your goals – whatever they may be. Through our courses you'll learn from passionate leaders who will inspire you to achieve your best and equip you for global success in a world where knowledge is the universal currency.

We offer an immersive curriculum, which in partnership with industry provides you with an array of practical learning opportunities. Our approach will ensure you enter the workforce with real-work experiences, ready to solve the world's greatest challenges.

I'm proud to say that UWA is an inclusive and multicultural community that embraces and values a diversity of backgrounds. We also have a reputation and vision for leading positive change, both here and internationally.

You'll find your time here thought-provoking and stimulating, and when you graduate from UWA you'll have made lifelong friends, precious memories, and have a sense of purpose and enquiry that will empower you to make a difference.

We look forward to welcoming you to our community and supporting you in shaping your future career goals.



The University of Western Australia acknowledges that its campuses are situated on Noongar land and that Noongar people remain the spiritual and cultural custodians of their land, and continue to practise their values, languages, beliefs and knowledge.

# Contents

## Study at UWA

A vibrant campus	4
Our global reputation	6
Get career-ready with a UWA degree	7
Student life	8
Support services	10
Accommodation at UWA	11
Scholarships and prizes	12
Student Exchange and Study Abroad program	13
Explore your options	14

## Choosing what to study

Architecture and Design	16
Business and Commerce	17
Data and Computer Science	19
Education	20
Engineering	21
Health and Biomedical Sciences	22
Humanities and Social Sciences	26
Law	31
Music and Fine Arts	32
Natural and Physical Sciences	33
Psychology	37

## Join UWA

Entry pathways	38
Join us at Bilya Marlee	40
How to apply	41
Fees	42
Course Key Index	43

### Early Offers for Year 12s

Tick your application off your list so it's one less thing you need to think about and spend that time focusing on your final exams. We'll be able to assess your application in four ways – your predicted ATAR, your actual ATAR (if this is higher than your predicted), Experience-based entry or STAT.

For more info visit [uwa.edu.au/early-offers](http://uwa.edu.au/early-offers)



# A vibrant campus

UWA's main campus is located on the picturesque banks of the Swan River (Derbarl Yerrigan), just minutes from Perth city.

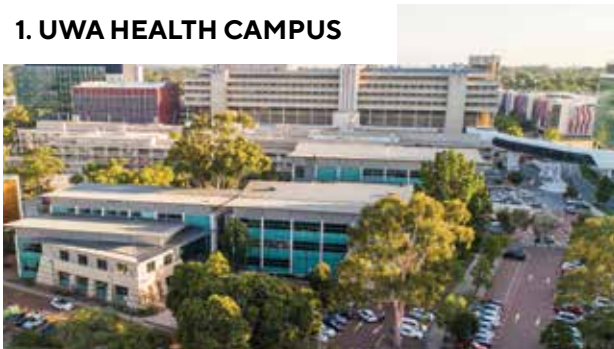
Featuring expansive green spaces, cafés and shops, as well as a multitude of modern teaching and research facilities, our campus provides you with a world-class learning environment. See the campus for yourself through our online virtual tour: [uwa.edu.au/360-campus-tour](http://uwa.edu.au/360-campus-tour)



## UWA's Albany Centre

Located five hours' drive from Perth, the Albany Centre offers students a high-tech learning environment. Here you can experience all that regional Western Australia has to offer while studying at university. [uwa.edu.au/albany](http://uwa.edu.au/albany)

## 1. UWA HEALTH CAMPUS



Specialist teaching and learning facilities for health and medical students.

## 2. EZONE UWA BUILDING

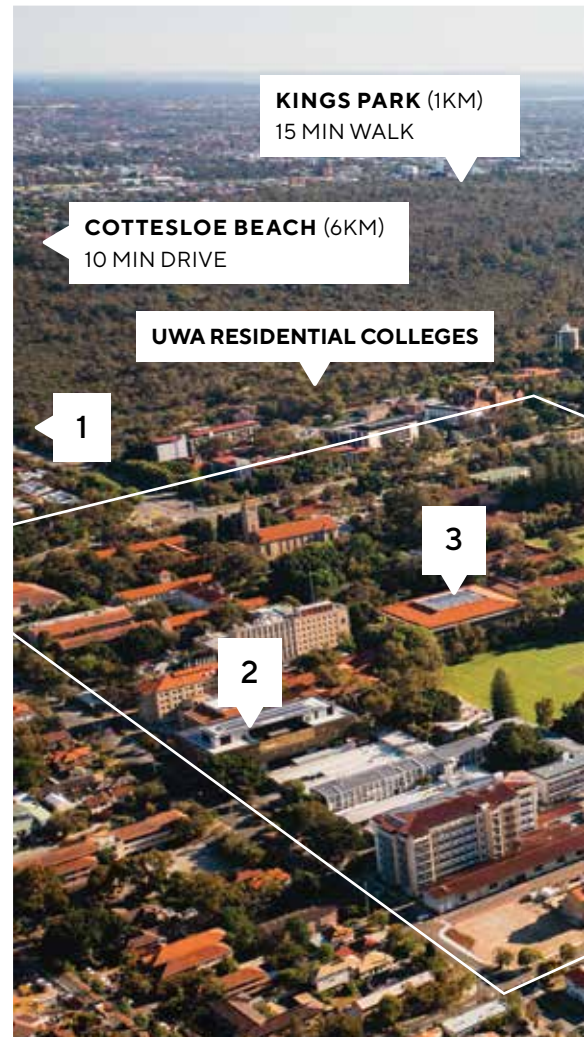


World-class learning space for engineering and mathematical science students.

## 3. REID LIBRARY



Extensive study spaces and convenient facilities at the heart of the Perth campus.







**PERTH CBD (5KM)**  
 UNDER 10 MIN DRIVE  
 15 MIN BIKE RIDE (DESIGNATED PATHS)

**PERTH AIRPORT (22KM)**  
 30 MIN DRIVE

**UWA CAMPUS**

4

5

6

7

#### 4. BAYLISS BUILDING



Thriving centre for world-class research and teaching, with advanced labs on every level.

#### 6. BILYA MARLEE



An Indigenous knowledge gateway housing the School of Indigenous Studies.

#### 5. MATILDA BAY



Popular social gathering spot right opposite the UWA campus.

#### 7. BUSINESS SCHOOL



One of the premier business schools in the Indo-Pacific region offering a world-class trading room and training facility for students.

# Our global reputation



## Study at WA's top university (QS 2023)

Stand out from the crowd and benefit from our industry connections, innovative courses, commitment to our student experience and high-impact research at a world top 100 university – the only one in WA.



RANKED IN THE **WORLD'S TOP 100** UNIVERSITIES  
(99TH IN ARWU 2022 AND 90TH IN QS 2023)



4,500 GLOBAL **INDUSTRY PARTNERSHIPS**

**#1**

UNIVERSITY FOR **GRADUATE EMPLOYABILITY** IN WA  
(QS GRADUATE EMPLOYABILITY RANKING 2022)



**AWARD-WINNING** TEACHERS  
(AUSTRALIAN AWARDS FOR UNIVERSITY TEACHING 2021)



**STUDENT DEMAND, STUDENT TEACHER RATIO, LEARNER ENGAGEMENT AND LEARNING RESOURCES**  
(GOOD UNIVERSITIES GUIDE 2022)



GROUP OF EIGHT AUSTRALIA MEMBER



## RANKED IN THE **WORLD'S TOP 50** FOR:

AGRICULTURE AND FORESTRY  
ANATOMY AND PHYSIOLOGY  
EARTH AND MARINE SCIENCES  
GEOLOGY  
GEOPHYSICS  
MINERAL AND MINING ENGINEERING  
PETROLEUM ENGINEERING  
PSYCHOLOGY  
SPORTS-RELATED SUBJECTS  
(QS WUR BY SUBJECT 2023)

AGRICULTURAL SCIENCES  
BIOLOGICAL SCIENCES  
CLINICAL MEDICINE  
ECOLOGY  
ENVIRONMENTAL SCIENCE AND ENGINEERING  
HUMAN BIOLOGICAL SCIENCES  
MARINE AND OCEAN ENGINEERING  
MINING AND MINERAL ENGINEERING  
OCEANOGRAPHY  
WATER RESOURCES ENGINEERING  
(ARWU 2022)

See a full list of our rankings at  
[uwa.edu.au/rankings-reputation](http://uwa.edu.au/rankings-reputation)





# Get career-ready with a UWA degree

WA's #1 university for graduate employability (QS 2022) will help you successfully navigate your career journey.

Getting a job at the end of your degree will likely be your top priority. At UWA, we've made it our top priority too, offering a wide range of degrees and programs to help you stand out in the job market and increase your employability. All our degrees include the option to take internships or Work Integrated Learning units, along with mentoring and volunteering opportunities, to enhance your standing in your future employers' eyes.



## Career Mentor Link

Be matched with professionals and get insider industry knowledge from people with real career experience.



## Careers Centre

Understand and engage with your chosen industry, enhance your employability skills, find work and internships, and nail your résumé and interview.



## Career and Employability Award

Practical real-world experiences, skills and knowledge to guide you on an enriching career journey.



## UWA Innovation Academy

Work with real companies to tackle the biggest challenges facing business, governments and society today.



## Practicums and Field Trips

Practical units with workplace and fieldwork placements across WA, Australia and even overseas.



## Work Integrated Learning (WIL)

Gain industry knowledge, develop career-ready skills and network with industry professionals as part of your course or as a co-curricular activity.



## McCusker Centre for Citizenship

An award-winning internship program, making a difference in our communities locally, nationally and globally.



## Bloom WA

A creative lab to turn your big business or community ideas into a startup, all credited towards your degree.



## Volunteering

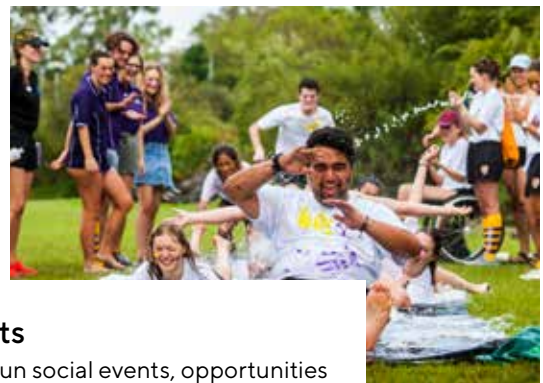
Make an impact and get involved, developing skills and experience that stand out on your résumé and final transcript.

To find out more about how we can prepare you for your dream career, from first job to long-term goals, visit [uwa.edu.au/graduate-career-ready](http://uwa.edu.au/graduate-career-ready)



# Student life

UWA is more than a university – it’s your community. There are many great places to eat, drink, shop, get fit, discover incredible art, relax, study and more.



## Accommodation

Living at UWA means you can easily walk to uni, cafés and shops. Plus, you're only a short bus ride to both the city and the beach.

## Arts and culture

Our on-campus art gallery features rotating exhibitions. Explore museums and enjoy regular music concerts.



## Events

Enjoy fun social events, opportunities for industry networking, workshops and more.

## Extracurricular courses and programs

Through collaborations with industry partners, we offer a range of free leadership, entrepreneurial and other courses to expand your skill set and advance your career.

## Food and drink

Enjoy a variety of cuisines (catering for all dietary requirements) from cafés and a range of food outlets on campus and in the neighbourhood.





## UWA Advance badges and activities

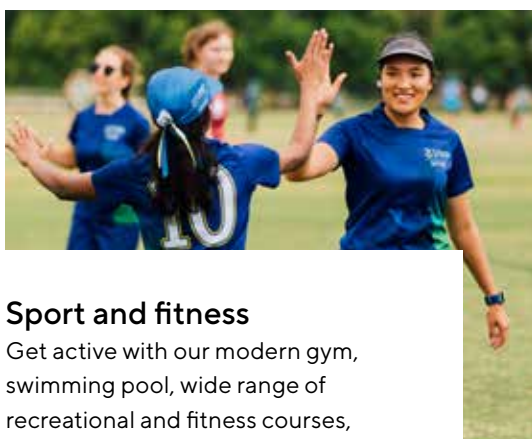
Be recognised for participating in and completing approved co-curricular activities across a diverse range of categories with digital badges that you can use on your résumé or LinkedIn.

## Libraries

UWA has several dedicated libraries across campus with high-tech study facilities, resources and learning spaces. There is also a range of virtual assistance options available.

## Spirituality and faith

UWA is a multi-faith university that supports and welcomes students with diverse cultural and spiritual backgrounds.



## Sport and fitness

Get active with our modern gym, swimming pool, wide range of recreational and fitness courses, social sports and more.

## Student clubs and societies

With more than 160 clubs and societies, you'll meet like-minded people with the same interests as you and a desire to make amazing things happen.

## Volunteering

There are opportunities to get involved on or off campus to support a cause, organisation, charity or group.

## Getting to UWA

There are lots of easy options for getting to and around UWA. Find out more at [transport.uwa.edu.au](https://transport.uwa.edu.au)

[uwa.edu.au/study/student-life](https://uwa.edu.au/study/student-life)



# Support services

You'll have plenty of support and help when you study at UWA. Here are just a few of the services we offer.

## Academic support

One-on-one support, study skills workshops (STUDYSmarter), extensive online resources and more.

## Career support

Personalised career advice, industry mentoring, online resources, networking events, workshops and more.

## Childcare services

Available for children aged six weeks to five years, plus after-school and vacation care for primary school-aged children.

## Course advice

Advice on study plans, enrolment, scholarships, studying abroad, extracurricular activities and more.

## Disability support

Perform at your academic best with support for any disability, whether a physical or mental health condition. UWA can help, no matter if your condition is ongoing, temporary or episodic.

## Getting started

Take part in orientation activities, receive mentoring from an experienced student (UniMentor) and support from the UWA team to help you settle into uni life.

## Health and wellbeing

Confidential medical, welfare and mental health support is available with a variety of specialist services and a pharmacy on campus. If you're looking for a doctor or GP, there's a Medical Centre on campus, as well as counsellors, mental health nurses, psychologists, physiotherapists and more.

You can also drop into The Living Room - a welcoming and inclusive space for peer support and easy access to campus health services.

## Safety

A security team is on campus 24/7 and is available to walk you to your car, bus stop or UWA accommodation after hours.

## UWA Student Guild

Run by students, for students, to make sure you have the best university experience possible.

[uwa.edu.au/students](http://uwa.edu.au/students)





# Accommodation at UWA

There are many options for quality accommodation close to the UWA campus. Explore a range of accommodation options, all located within close proximity to the campus, cafés, shops and the city.

## Live on campus

Make the most of your time at UWA and enjoy an amazing, fully inclusive lifestyle at College Row. Our five residential colleges are located directly opposite UWA, so you can sleep in late and still get to class on time. Each college has its own unique identity and provides a supportive and inclusive community for students. Find out more at [livingoncampus.uwa.edu.au](http://livingoncampus.uwa.edu.au)

## Live off-campus

UWA owns and manages a range of apartments, units and houses adjacent to campus that are perfect if you're seeking a more independent lifestyle.

## UWA Hosted Accommodation

We've partnered with MyStay International and Australian Homestay Network (AHN), to provide you with the opportunity to have a seamless transition by living with a local Perth family while adjusting to uni life.

## Perth city student accommodation

Live in the heart of Perth in one of the new student housing options endorsed by the University. Located in Perth's exciting social and cultural precinct, you have cafés, bars and restaurants on your doorstep along with public transport which will get you to uni or wherever you want to go.

## UWA Accommodation

The UWA Accommodation Office can provide advice and information in regards to finding long and short-term accommodation both on and off campus.

[uwa.edu.au/accommodation](http://uwa.edu.au/accommodation)  
[accommodation@uwa.edu.au](mailto:accommodation@uwa.edu.au)  
 +61 8 9488 0500



ST CATHERINE'S COLLEGE  
[STCATHERINES.UWA.EDU.AU](http://STCATHERINES.UWA.EDU.AU)



UNIVERSITY HALL  
[UNIHALL.UWA.EDU.AU](http://UNIHALL.UWA.EDU.AU)



ST GEORGE'S COLLEGE  
[STGC.UWA.EDU.AU](http://STGC.UWA.EDU.AU)



TRINITY RESIDENTIAL COLLEGE  
[TRC.UWA.EDU.AU](http://TRC.UWA.EDU.AU)



ST THOMAS MORE COLLEGE  
[STMC.UWA.EDU.AU](http://STMC.UWA.EDU.AU)

# Scholarships and prizes

UWA offers scholarships in a range of categories.



## Academic Excellence

Academic Excellence scholarships provide financial support to students who have been recognised for their outstanding academic results. These scholarships are available to both domestic and international students across all study areas.

## Diversity, equity and inclusion

Our Equity scholarships provide opportunities to students, new or current, who experience educational disadvantage due to a variety of circumstances. These scholarships provide outcomes that help realise students' academic success.

## Global Experience

Our Global Experience scholarships provide an enriched educational experience for both domestic and international students, creating new and exciting opportunities and collaborations across geographic borders.

## Leadership, talent and social impact

Our Leadership and Social Impact scholarships have been created to support talented students with the potential to drive change and become the next generation of influential leaders across society, industry, sports and academia.

Each category will include a range of scholarships in areas such as Sports Excellence, Indigenous, Residential, Financial Hardship, Educational Disadvantage and Travel, among others.

WE AWARD MORE THAN **\$6 MILLION** WORTH OF SCHOLARSHIPS TO COURSEWORK STUDENTS EACH YEAR

Some of our high-achievement scholarships include:

### UWA Fogarty Foundation and Winthrop Scholarships

Twenty scholarships in total are available for students who show significant academic potential, together with leadership responsibility and other outstanding achievements throughout Year 11 and 12.

### Lawrence Scholarships

Lawrence Scholarships are automatically awarded to any student who achieves an ATAR score of 99.95. There are twenty scholarships available.

Find out more about our scholarships and how to apply at [uwa.edu.au/study/scholarships/explore](https://uwa.edu.au/study/scholarships/explore) or get in touch through [ask.uwa.edu.au](mailto:ask.uwa.edu.au)

**\$400,000** IN PRIZES AWARDED TO STUDENTS EACH YEAR

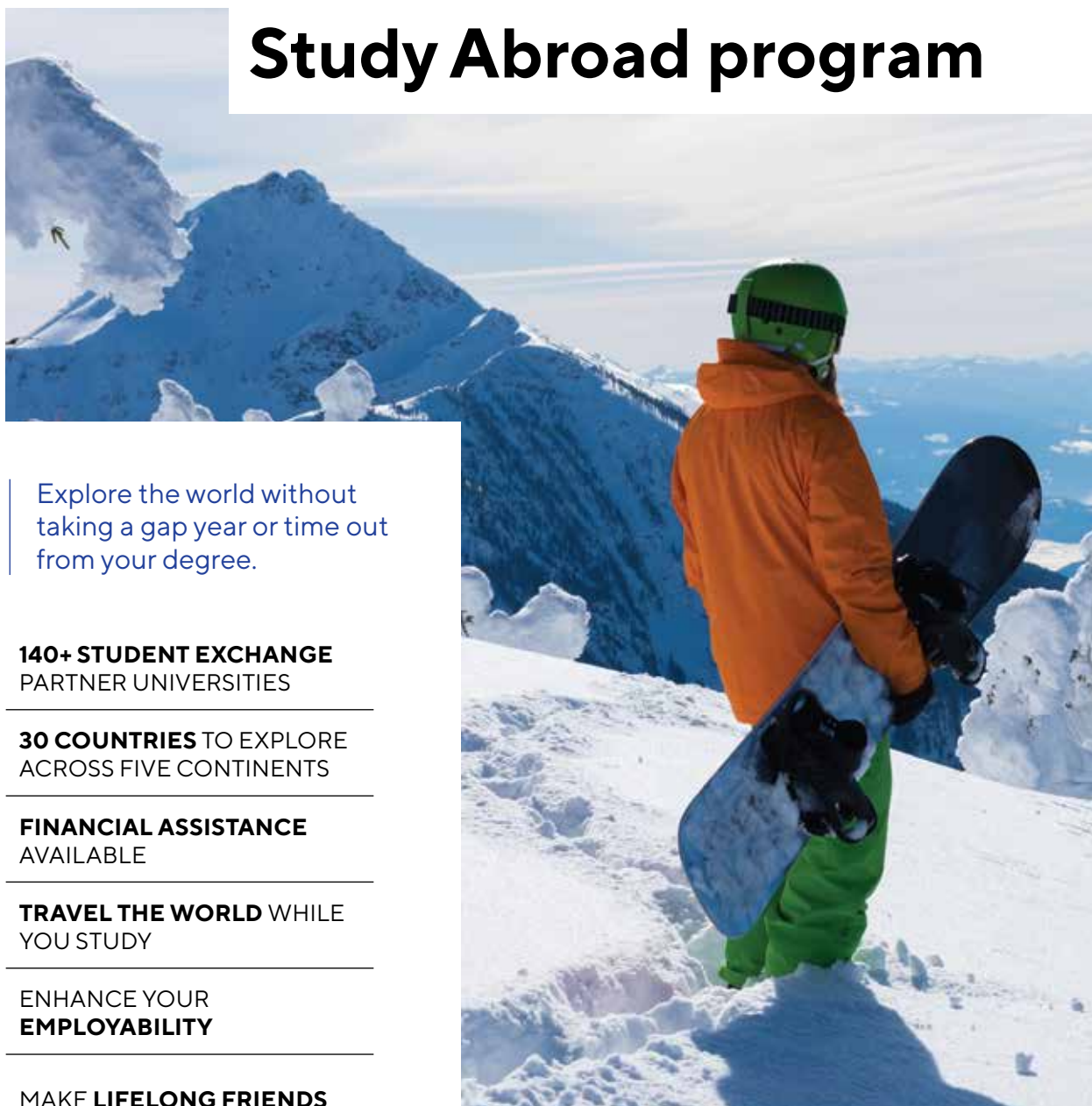
We like to recognise our students' outstanding academic achievements. There is a range of prizes awarded to UWA students, based on the results achieved in the previous academic year. Best of all, you don't need to apply for the prizes unless specified in the prize conditions.

Find out more [uwa.edu.au/study/prizes](https://uwa.edu.au/study/prizes)

**UWA Scholarships and Prizes are proudly funded by UWA, government, corporate and private donors.**



# Student Exchange and Study Abroad program



Explore the world without taking a gap year or time out from your degree.

**140+ STUDENT EXCHANGE**  
PARTNER UNIVERSITIES

**30 COUNTRIES** TO EXPLORE  
ACROSS FIVE CONTINENTS

**FINANCIAL ASSISTANCE**  
AVAILABLE

**TRAVEL THE WORLD** WHILE  
YOU STUDY

ENHANCE YOUR  
**EMPLOYABILITY**

MAKE **LIFELONG FRIENDS**

INCREASE YOUR  
**INDEPENDENCE AND**  
**CONFIDENCE**

IMMERSE YOURSELF IN A  
**NEW CULTURE**

CHOOSE YOUR OWN  
**EXPERIENCE**, FROM TWO  
WEEKS TO A YEAR

[uwa.edu.au/study/global](http://uwa.edu.au/study/global)

“Words can’t explain how amazing exchange was. It was a once-in-a-lifetime opportunity and extremely rewarding to meet so many new people who will be friends for life.”

**ELLEN**  
UNIVERSITY OF VERMONT  
BURLINGTON, UNITED STATES



# Explore your options

Specialise in one area or create a degree that combines your interests. Whatever you seek, you'll find a degree that fits.

UWA's immersive curriculum and global network prepares you for the ever-changing world outside your degree. You'll gain industry connections even before you graduate, and kick-start a successful career.

## Undergraduate degree types

Seeking your first university degree? Our undergraduate courses allow you to start your journey to a fulfilling career.

### Comprehensive bachelor's degrees

Design your own course with our comprehensive bachelor's degrees.

Choose one or two majors from a wide range, then add electives and/or a minor to suit your interests and career goals. Explore your interests with the flexibility to change your mind - choose your major(s) when you enrol and if you'd like to change during your degree you can.

### Specialised bachelor's degrees

Prepare for your dream career with a specialised bachelor's degree.

You'll take an extended major with a carefully designed study plan to give you in-depth knowledge of your chosen career or profession. You can complement this with a minor or electives from almost any study area.

### Combined bachelor's degrees

Pursue your passions and maximise your career options with our combined bachelor's degrees.

You'll complete two bachelor's degrees - one comprehensive (where you'll choose a major from a wide range of options) and one specialised (where you'll take a defined study plan).

### Honours

Improve your career prospects or take a path to further study with an honours course.

Honours is a one-year program you can apply for after completing your bachelor's degree with strong academic performance in your major. An honours year includes advanced coursework and a major research or creative project.

We also offer some integrated honours courses. These four-year courses also include advanced coursework and a major research or creative project in your final year.

**Find the course  
that's right for you**

For more information visit

[uwa.edu.au/study/courses-and-careers](http://uwa.edu.au/study/courses-and-careers)



## What makes up a bachelor's degree?

### Majors

You'll take at least one major – a sequence of units that will give you in-depth knowledge in your chosen area of specialisation. We offer a wide range of majors (which typically make up at least one-third of your course) and extended majors (up to two-thirds of your course) within our bachelor's degrees. Depending on the course, you may be able to take more than one major.

### Minors

You also have the option to choose a minor (or two, depending on your course structure). Minors are shorter sequences of four units that allow you to gain knowledge in an area that may complement your major(s), suit your career goals or simply be of personal interest.

### Other units

The rest of your study plan will be filled by different kinds of units (depending on your chosen course and major[s]).

- **Foundation units:** Required units (in certain courses) that give you broad grounding and key skills in your chosen degree area, irrespective of your choice of major(s).
- **Bridging units:** If you don't have the required ATAR subject or equivalent for your chosen major, you can usually take these additional units in your first year as part of the major.
- **Elective units:** Elective units provide you with the opportunity to explore a range of interests and new disciplines. If you have space for elective units you can choose (almost!) anything you like to expand your knowledge in a new field, provided that you meet the unit rules.

### Postgraduate pathways

Our packaged undergraduate and postgraduate degrees provide the knowledge and networks for career success. If you don't achieve the entry requirements (or equivalent) to secure your place on a postgraduate pathway, you can still apply for your chosen postgraduate degree after your bachelor's degree.

### Assured pathways

Secure a guaranteed place in one of our high-demand postgraduate courses before you start your bachelor's degree – and perhaps even complete your postgraduate degree sooner. Offers are based on your high school performance (or equivalent) and satisfactory results in your bachelor's degree.

### Combined bachelor's and master's degrees

Complete two degrees in as little as four years. An express path to your postgraduate qualification, it begins with advanced postgraduate-level studies in the third year of your bachelor's degree.

### UWA Starter

Start your uni experience early by completing UWA micro-credentials while you're still in school. Successfully completed UWA Starter micro-credentials can also contribute towards your admission to UWA via Experience-based entry. [uwa.edu.au/study/uwa-starter](http://uwa.edu.au/study/uwa-starter)

## Example study plan - Comprehensive bachelor's degree with 1 major and 1 minor

1ST YEAR	SEM 1	Major	Minor	Elective	Elective
	SEM 2	Major	Minor	Elective	Elective
2ND YEAR	SEM 1	Major	Minor	Elective	Elective
	SEM 2	Major	Minor	Elective	Elective
3RD YEAR	SEM 1	Major	Major	Elective	Elective
	SEM 2	Major	Major	Elective	Elective

**Key:** ■ Major ■ Minor ■ Elective

## Architecture and Design

Study architecture, landscape architecture or urban design to create the built environment for a vital and sustainable future. In this field, creative and strategic thinking come together.

[uwa.edu.au/study/areas/architecture-design](http://uwa.edu.au/study/areas/architecture-design)



COURSE	FULL-TIME (YEARS); INTAKE	COURSE CODES	ATAR/IB; STAT	PREREQUISITE/S	CAREER OPPORTUNITIES
<b>COMPREHENSIVE DEGREES</b>					
<b>Bachelor of Environmental Design</b> Available for Experienced-based entry	3*; FEB, JUL	UWA BP011 TISC UP011	75/24; WE & V or Q	None	Architect <sup>1</sup> Conservationist Environmental Planner Landscape Architect <sup>1</sup>
<b>Bachelor of Environmental Design - Architecture (Extended Major)</b> Available for Experienced-based entry	3*; FEB, JUL	UWA BP011 UWA MJD-ARCTA TISC UP011	75/24; WE & V or Q	None	Architect <sup>1</sup> Architectural Draftsperson Architectural Policy Consultant
<b>Bachelor of Environmental Design - Environmental Geography and Planning</b> Available for Experienced-based entry	3*; FEB, JUL	UWA BP011 UWA MJD-ENGE0 TISC UP011	75/24; WE & V or Q	None	Environmental Consultant Natural Resource Manager Policy and Planning Manager
<b>Bachelor of Environmental Design - Landscape Architecture</b> Available for Experienced-based entry	3*; FEB, JUL	UWA BP011 UWA MJD-LDARC TISC UP011	75/24; WE & V or Q	None	Environmental Adviser Environmental Planner Landscape Architect <sup>1</sup>
<b>Bachelor of Philosophy (Honours)</b>	4*; FEB	UWA BH005 TISC UH005	98/38; N/A	Refer to relevant major/s	Architect <sup>1</sup> Land Economist Urban Designer <sup>1</sup>
<b>ASSURED PATHWAYS</b>					
<b>Master of Architecture via Bachelor of Environmental Design</b>	3*+2*; FEB, JUL	UWA BP011 UWA 25520 TISC UK011	92/32; N/A	None	Architect <sup>1</sup> Architectural Policy Adviser Designer Urban Designer <sup>1</sup>
<b>Master of Architecture via Bachelor of Philosophy (Honours)</b>	4*+2*; FEB	UWA BH005 UWA 25520 TISC UK005	98/38; N/A	None	Architect <sup>1</sup> Architectural Policy Adviser Designer Urban Designer <sup>1</sup>

Refer to the Course Key Index on page 43 for reference to citations.

## Experience-based entry

UWA's new Experience-based entry allows you to apply for a select number of comprehensive bachelor's degrees using a combination of academic and life experiences. This is the ideal pathway if your ATAR doesn't reflect your true capability, if you have completed TAFE or VET or even if you're not doing ATAR.

Visit [uwa.edu.au/study/experience-based-entry](http://uwa.edu.au/study/experience-based-entry)





## Business and Commerce

Develop your business acumen, grow expert knowledge, work on real business case studies and undertake internships and practical projects to prepare you for a fulfilling career in industry, government or not-for-profit sectors.

[uwa.edu.au/study/areas/business-commerce](http://uwa.edu.au/study/areas/business-commerce)



COURSE	FULL-TIME (YEARS); INTAKE	COURSE CODES	ATAR/IB; STAT	PREREQUISITE/S	CAREER OPPORTUNITIES
<b>COMPREHENSIVE DEGREES</b>					
<b>Bachelor of Arts</b> Available for Experienced-based entry	3*; FEB, JUL	UWA BP001 TISC UP001	75/24; WE & V or Q	Refer to relevant major/s	Content Creator Journalist Policy Maker
<b>Bachelor of Arts - Communication and Media Studies</b> Available for Experienced-based entry	3*; FEB, JUL	UWA BP001 UWA MJD-CMMST TISC UP001	75/24; WE & V or Q	None	Advertising Strategist Content Producer Journalist
<b>Bachelor of Arts - Work and Employment Relations</b> Available for Experienced-based entry	3*; FEB, JUL	UWA BP001 UWA MJD-WKERL TISC UP001	75/24; WE & V or Q	None	Human Resource Professional Industrial Relations Officer Management Adviser
<b>Bachelor of Business</b> Available for Experienced-based entry	3*; FEB, JUL	UWA BP009 TISC UP009	75/24; WE & V or Q	None	Entrepreneur Management Adviser Market Analyst
<b>Bachelor of Business - Business Management</b> Available for Experienced-based entry	3*; FEB, JUL	UWA BP009 UWA MJD-BMGMT TISC UP009	75/24; WE & V or Q	None	Entrepreneur Manager Small Business Owner
<b>Bachelor of Business - Enterprise and Innovation</b> Available for Experienced-based entry	3*; FEB, JUL	UWA BP009 UWA MJD-ENTIN TISC UP009	75/24; WE & V or Q	None	Consultant Entrepreneur Innovation Strategist
<b>Bachelor of Business - Global Business</b> Available for Experienced-based entry	3*; FEB, JUL	UWA BP009 UWA MJD-GLBUS TISC UP009	75/24; WE & V or Q	None	Business Manager Business Owner Consultant
<b>Bachelor of Commerce</b> Available for Experienced-based entry	3*; FEB, JUL	UWA BP002 TISC UP002	80/26; WE & V or Q	None	Accountant Financial Analyst Marketer
<b>Bachelor of Commerce - Accounting</b> Available for Experienced-based entry	3*; FEB, JUL	UWA BP002 UWA MJD-ACCTG TISC UP002	80/26; WE & V or Q	None	Accountant Business Owner Managing Director
<b>Bachelor of Commerce - Business Analytics</b> Available for Experienced-based entry	3*; FEB, JUL	UWA BP002 UWA MJD-BUSAN TISC UP002	80/26; WE & V or Q	None	Data Analyst Economist Marketing Analyst
<b>Bachelor of Commerce - Business Law</b> Available for Experienced-based entry	3*; FEB, JUL	UWA BP002 UWA MJD-BSLAW TISC UP002	80/26; WE & V or Q	None	Business Adviser Investment Banker Policy and Planning Manager
<b>Bachelor of Commerce - Economics</b> Available for Experienced-based entry	3*; FEB, JUL	UWA BP002 UWA MJD-ECNSM TISC UP002	80/26; WE & V or Q	None	Economist Financial Broker Finance Manager
<b>Bachelor of Commerce - Finance</b> Available for Experienced-based entry	3*; FEB, JUL	UWA BP002 UWA MJD-FINCE TISC UP002	80/26; WE & V or Q	None	Financial Analyst Investment Banker Stockbroker
<b>Bachelor of Commerce - Human Resource Management</b> Available for Experienced-based entry	3*; FEB, JUL	UWA BP002 UWA MJD-HRSMT TISC UP002	80/26; WE & V or Q	None	Human Resource Professional Management Adviser Recruitment Adviser
<b>Bachelor of Commerce - Management</b> Available for Experienced-based entry	3*; FEB, JUL	UWA BP002 UWA MJD-MGMNT TISC UP002	80/26; WE & V or Q	None	Management Adviser Project Manager Strategic Manager

Refer to the Course Key Index on page 43 for reference to citations.

COURSE	FULL-TIME (YEARS); INTAKE	COURSE CODES	ATAR/IB; STAT	PREREQUISITE/S	CAREER OPPORTUNITIES
<b>Bachelor of Commerce - Marketing</b> Available for Experienced-based entry	3*; FEB, JUL	UWA BPO02 UWA MJD-MRKTG TISC UP002	80/26; WE & V or Q	None	Advertising Professional Digital Marketer Marketing Consultant
<b>Bachelor of Philosophy (Honours)</b>	4*; FEB	UWA BH005 TISC UH005	98/38; N/A	Refer to relevant major/s	Business Adviser Economic Analyst Financial Consultant
<b>Bachelor of Science - Agribusiness</b> Available for Experienced-based entry	3*; FEB, JUL	UWA BP004 UWA MJD-AGBUS TISC UP004	75/24; WE & V or Q	MM+	Agricultural Consultant Agricultural Scientist Policy Analyst
<b>SPECIALISED DEGREES</b>					
<b>Bachelor of Agribusiness - Agribusiness and Agricultural Science (Extended Major)</b>	3*; FEB, JUL	UWA BPO20 TISC UP020	80/26; N/A	MM+	Business Consultant Financial Analyst Policy Analyst
<b>Bachelor of Economics - Financial Economics (Extended Major)</b>	3*; FEB, JUL	UWA BP013 UWA MJD-FINEC TISC UP013	85/28; N/A	MM+	Banking Analyst Economist Financial Analyst
<b>Bachelor of Economics - Professional Economics (Extended Major)</b>	3*; FEB, JUL	UWA BP013 UWA MJD-ECNPF TISC UP013	85/28; N/A	MM+	Economic Analyst Economic Consultant Policy Adviser
<b>Bachelor of Philosophy, Politics and Economics - Philosophy, Politics and Economics (Extended Major)</b>	3*; FEB, JUL	UWA BP012 UWA MJD-PPEDM TISC UP012	90/30; N/A	None	Diplomat Economic /Political Journalist Policy Analyst
<b>COMBINED BACHELOR'S DEGREES</b>					
<b>Bachelor of Agricultural Science and Bachelor of Commerce</b>	4*; FEB, JUL	UWA CB010 TISC UB010	88/30; N/A	Refer to relevant major/s	Business Consultant Land Economist Sustainability Adviser
<b>Bachelor of Economics and Bachelor of Commerce</b>	4*; FEB, JUL	UWA CB020 TISC UB020	90/30; N/A	MM+	Central Bank Economist Statistician
<b>Bachelor of Engineering (Honours) and Bachelor of Commerce</b>	5**; FEB, JUL	UWA CB006 TISC UB006	88/30; N/A	E	Accountant Economic Analyst Engineer
<b>Bachelor of Environmental Science and Bachelor of Commerce</b>	4*; FEB, JUL	UWA CB007 TISC UB007	88/30; N/A	Refer to relevant major/s	Business Consultant Environmental Adviser Research Scientist
<b>Bachelor of Human Rights and Bachelor of Commerce</b>	4*; FEB, JUL	UWA CB023 TISC UB023	87/30; N/A	Refer to relevant major/s	Economic Analyst Management Adviser Public Policy Adviser
<b>Bachelor of Modern Languages and Bachelor of Business</b>	4*; FEB, JUL	UWA CB028 TISC UB028	80/26; N/A	Refer to relevant major/s	Diplomat International Market Analyst Small Business Entrepreneur
<b>Bachelor of Philosophy, Politics and Economics and Bachelor of Commerce</b>	4*; FEB, JUL	UWA CB017 TISC UB017	92/32; N/A	Refer to relevant major/s	Management Adviser Managing Director Policy Adviser
<b>Bachelor of Psychology and Bachelor of Commerce</b>	4*; FEB, JUL	UWA CB013 TISC UB013	88/30; N/A	Refer to relevant major/s	Industrial Relations Manager Psychologist <sup>2</sup> Public Relations Officer
<b>COMBINED BACHELOR'S AND MASTER'S DEGREE</b>					
<b>Bachelor of Economics and Master of Economics</b>	4*; FEB, JUL	UWA CM002 TISC UM002	90/30; N/A	MM+	Central Bank Economist Investment Banker Statistician

Refer to the Course Key Index on page 43 for reference to citations.



## Data and Computer Science

Through interpreting the data and computer science behind technological advances, you can help create and develop methods to improve everyday lives. Gain the knowledge and expertise needed for an exciting career in the world of information and technology.

[uwa.edu.au/study/areas/data-computer-science](http://uwa.edu.au/study/areas/data-computer-science)



COURSE	FULL-TIME (YEARS); INTAKE	COURSE CODES	ATAR/IB; STAT	PREREQUISITE/S	CAREER OPPORTUNITIES
<b>COMPREHENSIVE DEGREES</b>					
<b>Bachelor of Science</b> Available for Experienced-based entry	3*; FEB, JUL	UWA BP004 TISC UP004	75/24; WE & V or Q	Refer to relevant major/s	Applications Developer Cybersecurity Specialist Data Scientist Software Engineer
<b>Bachelor of Science - Computer Science</b> Available for Experienced-based entry	3*; FEB, JUL	UWA BP004 UWA MJD-CMPSC TISC UP004	75/24; WE & V or Q	MM+	Applications Developer Business Analyst Web Designer
<b>Bachelor of Science - Cybersecurity</b> Available for Experienced-based entry	3*; FEB, JUL	UWA BP004 UWA MJD-CYBER TISC UP004	75/24; WE & V or Q	MM+	Cybersecurity Specialist IT Specialist Software Engineer
<b>Bachelor of Science - Data Science</b> Available for Experienced-based entry	3*; FEB, JUL	UWA BP004 UWA MJD-DATSC TISC UP004	75/24; WE & V or Q	MM+	Data Scientist Network Administrator Programmer/Developer
<b>Bachelor of Philosophy (Honours)</b>	4*; FEB	UWA BH005 TISC UH005	98/38; N/A	Refer to relevant major/s	Cybersecurity Specialist Data Analyst Software Developer
<b>INTEGRATED HONOURS DEGREE</b>					
<b>Bachelor of Advanced Computer Science (Honours)</b>	4; FEB, JUL	UWA BH008 TISC UH008	92/32; N/A	MM	AI Specialist Cybersecurity Specialist Data Scientist Software Engineer
<b>Bachelor of Advanced Computer Science (Honours) - Artificial Intelligence (Extended Major)</b>	4; FEB, JUL	UWA BH008 UWA MJD-ARIDM TISC UH008	92/32; N/A	MM	AI Data Analyst AI Engineer Data Scientist
<b>Bachelor of Advanced Computer Science (Honours) - Computing and Data Science (Extended Major)</b>	4; FEB, JUL	UWA BH008 UWA MJD-CDSDM TISC UH008	92/32; N/A	MM	Network Professional Full Stack Web Developer Software Developer
<b>Bachelor of Advanced Computer Science (Honours) - International Cybersecurity (Extended Major)</b>	4; FEB, JUL	UWA BH008 UWA MJD-ICYDM TISC UH008	92/32; N/A	MM	Cybersecurity Specialist IT Specialist Software Engineer

Refer to the Course Key Index on page 43 for reference to citations.

## Entry Pathways

UWA offers a range of entry pathways to help you take the next step in your career journey. Find out about the various pathways on offer such as First in Family, Indigenous pathway programs, Special Tertiary Admissions Test (STAT) and many more.

Visit [uwa.edu.au/study/admission-entry-pathways](http://uwa.edu.au/study/admission-entry-pathways)



## Education

Ignite your passion to teach and inspire a love of learning in others. Qualify for a highly rewarding career as an educator or explore the options for experienced teachers, policymakers, consultants and leaders who seek to deepen their knowledge, contribute to the profession and advance their career.

[uwa.edu.au/study/areas/education](http://uwa.edu.au/study/areas/education)



COURSE	FULL-TIME (YEARS); INTAKE	COURSE CODES	ATAR/IB; STAT	PREREQUISITE/S	CAREER OPPORTUNITIES
<b>SPECIALISED DEGREE</b>					
<b>Bachelor of Education (Primary) (Honours)</b>	4*; FEB	UWA BH020 TISC UH020	75/24; N/A	S	Community Educator Educational Assistant Primary School Teacher
<b>COMBINED BACHELOR'S AND MASTER'S DEGREE</b>					
<b>Bachelor of Science and Master of Teaching (Secondary)</b>	4*; FEB	UWA CM023 TISC UM023	84/28; N/A	EDU	Secondary School Teacher in your chosen specialisation
<b>ASSURED PATHWAYS</b>					
<b>Master of Teaching (Secondary) via:</b> Bachelor of Arts; OR Bachelor of Biomedical Science; OR Bachelor of Business; OR Bachelor of Commerce; OR Bachelor of Music; OR Bachelor of Philosophy (Honours); OR Bachelor of Science; OR Bachelor of Sport and Exercise Sciences	3*+1.5*; FEB	UWA BP001/32550 TISC UT001 UWA BP006/32550 TISC UT006 UWA BP009/32550 TISC UT009 UWA BP002/32550 TISC UT002 UWA BP008/32550 TISC UT008 UWA BH005/32550 TISC UT010 UWA BP004/32550 TISC UT004 UWA BP026/32550 TISC UT026	80/26; N/A	EDU	Secondary School Teacher

Refer to the Course Key Index on page 43 for reference to citations.

### NEW COURSE

## Bachelor of Education (Primary) (Honours)

Make a real difference to young childrens' lives and equip them with the skills, knowledge and values needed to succeed in the world, now and in the future. The new Bachelor of Education (Primary) (Honours) degree prepares you to be a teacher from Foundation through to Year 6.

You'll develop in-depth knowledge of the primary curriculum, be exposed to a range of teaching strategies, and benefit from 100 days in a professional placements supervised by a practicing teacher.

Visit [uwa.edu.au/study/bachelor-of-education-primary](http://uwa.edu.au/study/bachelor-of-education-primary)





## Engineering

Engineering helps shape our world in so many ways, from providing clean drinking water and sustainable infrastructure to designing large coastal protection systems or tiny electronic devices to improve health outcomes. Engineering allows you to explore how things work and brings to life new creations and designs, enabling a better society for all.

[uwa.edu.au/study/areas/engineering](http://uwa.edu.au/study/areas/engineering)



COURSE	FULL-TIME (YEARS); INTAKE	COURSE CODES	ATAR/IB; STAT	PREREQUISITE/S	CAREER OPPORTUNITIES
<b>SPECIALISED DEGREE</b>					
Bachelor of Engineering (Honours)	4*; FEB, JUL	UWA BH011 TISC UH011	80/26; N/A	E	Refer to relevant specialisations
Bachelor of Engineering (Honours) - Automation and Robotics Engineering (Extended Major)	4*; FEB, JUL	UWA BH011 UWA MJD-EAUTO TISC UH011	80/26; N/A	E	Automation Engineer Production Engineer Robotics Engineer
Bachelor of Engineering (Honours) - Biomedical Engineering (Extended Major)	4*; FEB, JUL	UWA BH011 UWA MJD-EBMEG TISC UH011	80/26; N/A	E	Biomedical Engineer Clinical Engineer Rehabilitation Engineer
Bachelor of Engineering (Honours) - Chemical Engineering (Extended Major)	4*; FEB, JUL	UWA BH011 UWA MJD-ECHEM TISC UH011	80/26; N/A	E	Chemical Engineer Process Engineer Production Engineer
Bachelor of Engineering (Honours) - Civil Engineering (Extended Major)	4*; FEB, JUL	UWA BH011 UWA MJD-ECIVL TISC UH011	80/26; N/A	E	Civil Engineer Structural Engineer Transport Engineer
Bachelor of Engineering (Honours) - Electrical and Electronic Engineering (Extended Major)	4*; FEB, JUL	UWA BH011 UWA MJD-EELEC TISC UH011	80/26; N/A	E	Electrical Engineer Electrical Power Engineer Electronic Engineer
Bachelor of Engineering (Honours) - Environmental Engineering (Extended Major)	4*; FEB, JUL	UWA BH011 UWA MJD-EENVE TISC UH011	80/26; N/A	E	Consultant Environmental Engineer Researcher
Bachelor of Engineering (Honours) - Mechanical Engineering (Extended Major)	4*; FEB, JUL	UWA BH011 UWA MJD-EMECH TISC UH011	80/26; N/A	E	Mechanical Engineer Operations Engineer Technology Manager
Bachelor of Engineering (Honours) - Mining Engineering (Extended Major)	4*; FEB, JUL	UWA BH011 UWA MJD-EMINE TISC UH011	80/26; N/A	E	Consultant Mining Engineer Researcher
Bachelor of Engineering (Honours) - Software Engineering (Extended Major)	4*; FEB, JUL	UWA BH011 UWA MJD-ESOFT TISC UH011	80/26; N/A	E	Data Analyst Software Architect Software Engineer
<b>COMBINED BACHELOR'S DEGREES</b>					
Bachelor of Engineering (Honours) and Bachelor of Arts	5**; FEB, JUL	UWA CB034 TISC UB034	88/30; N/A	Refer to relevant major/s	Engineer Project Manager Technology Journalist
Bachelor of Engineering (Honours) and Bachelor of Commerce	5**; FEB, JUL	UWA CB006 TISC UB006	88/30; N/A	Refer to relevant major/s	Accountant Engineer Project Manager
Bachelor of Engineering (Honours) and Bachelor of Modern Languages	5.25**; FEB, JUL	UWA CB030 TISC UB030	88/30; N/A	Refer to relevant major/s	Contract Negotiator Engineer Translator/Interpreter
Bachelor of Engineering (Honours) and Bachelor of Philosophy (Honours)	5.5-6.5*; FEB, JUL	UWA CB014 TISC UB014	98/38; N/A	Refer to relevant major/s	Engineer Researcher Jobs related to your BPhil (Hons)
Bachelor of Engineering (Honours) and Bachelor of Science	5**; FEB, JUL	UWA CBO04 TISC UB004	88/30; N/A	Refer to relevant major/s	Engineer Environmental Adviser Physicist

Refer to the Course Key Index on page 43 for reference to citations.

## Health and Biomedical Sciences

If you're passionate about advancing the health and wellbeing of communities, join a university that plays an important role in delivering knowledge and discoveries to guarantee our healthy futures.

[uwa.edu.au/study/areas/health-biomedical-sciences](http://uwa.edu.au/study/areas/health-biomedical-sciences)



COURSE	FULL-TIME (YEARS); INTAKE	COURSE CODES	ATAR/IB; STAT	PREREQUISITE/S	CAREER OPPORTUNITIES
<b>COMPREHENSIVE DEGREES</b>					
<b>Bachelor of Biomedical Science</b> Available for Experienced-based entry	3*; FEB, JUL	UWA BP006 TISC UP006	80/26; WE & V or Q	Refer to relevant major/s	Biochemist Biomedical Researcher Medical Researcher
<b>Bachelor of Biomedical Science - Aboriginal Health and Wellbeing</b> Available for Experienced-based entry	3*; FEB, JUL	UWA BP006 UWA MJD-ABHWB TISC UP006	80/26; WE & V or Q	MA+	Health and Welfare Services Manager Health Policy Adviser Social Worker <sup>1</sup>
<b>Bachelor of Biomedical Science - Anatomy and Human Biology</b> Available for Experienced-based entry	3*; FEB, JUL	UWA BP006 WA MJD-ANHBY TISC UP006	80/26; WE & V or Q	MM+	Anatomist Exercise Physiologist Research Assistant
<b>Bachelor of Biomedical Science - Biochemistry and Molecular Biology</b> Available for Experienced-based entry	3*; FEB, JUL	UWA BP006 UWA MJD-BCHMB TISC UP006	80/26; WE & V or Q	MM+ and C2	Biochemist Chemist Clinical Scientist Molecular Biologist
<b>Bachelor of Biomedical Science - Exercise and Health</b> Available for Experienced-based entry	3*; FEB, JUL	UWA BP006 UWA MJD-EXHSC TISC UP006	80/26; WE & V or Q	MA+	Health Adviser Health and Fitness Coordinator Sports Development Officer
<b>Bachelor of Biomedical Science - Genetics</b> Available for Experienced-based entry	3*; FEB, JUL	UWA BP006 UWA MJD-GENET TISC UP006	80/26; WE & V or Q	MM+ and C2	Biotechnologist Genetic Counsellor Geneticist
<b>Bachelor of Biomedical Science - Humanities in Health and Medicine</b> Available for Experienced-based entry	3*; FEB, JUL	UWA BP006 UWA MJD-HHMED TISC UP006	80/26; WE & V or Q	MA+	Community Health Practitioner Health Educator Health Researcher Healthcare Administrator
<b>Bachelor of Biomedical Science - Microbiology and Immunology</b> Available for Experienced-based entry	3*; FEB, JUL	UWA BP006 UWA MJD-MCBIM TISC UP006	80/26; WE & V or Q	MA+, HB/B+ and C2	Environmental Testing Scientist Food Safety Scientist Laboratory Technician
<b>Bachelor of Biomedical Science - Neuroscience</b> Available for Experienced-based entry	3*; FEB, JUL	UWA BP006 UWA MJD-NEURS TISC UP006	80/26; WE & V or Q	MM+ and C+	Laboratory Manager Neuroscientist Neurophysiologist
<b>Bachelor of Biomedical Science - Pathology and Laboratory Medicine</b> Available for Experienced-based entry	3*; FEB	UWA BP006 UWA MJD-PLMED TISC UP006	80/26; WE & V or Q	MA+, HB/B+ and C2	Clinical Trials Assistant Laboratory Technician Research Scientist <sup>1</sup>
<b>Bachelor of Biomedical Science - Pharmacology</b> Available for Experienced-based entry	3*; FEB, JUL	UWA BP006 UWA MJD-PHARY TISC UP006	80/26; WE & V or Q	MA+, HB/B+ and C2	Medical Doctor <sup>1</sup> Pharmacist <sup>1</sup> Research Scientist <sup>1</sup>
<b>Bachelor of Biomedical Science - Physiology</b> Available for Experienced-based entry	3*; FEB, JUL	UWA BP006 UWA MJD-PHYGY TISC UP006	80/26; WE & V or Q	MM+ and C+	Clinical Physiologist Health and Safety Officer Medical Technician
<b>Bachelor of Biomedical Science - Public Health</b> Available for Experienced-based entry	3*; FEB, JUL	UWA BP006 UWA MJD-PPHLH TISC UP006	80/26; WE & V or Q	MA+	Health Promotion Officer Health and Welfare Services Policy and Planning Manager



COURSE	FULL-TIME (YEARS); INTAKE	COURSE CODES	ATAR/IB; STAT	PREREQUISITE/S	CAREER OPPORTUNITIES
<b>Bachelor of Science</b> Available for Experienced-based entry	3*; FEB, JUL	UWA BP004 TISC UP004	75/24; WE & V or Q	Refer to relevant major/s	Environmental Adviser Software Developer Zoologist
<b>Bachelor of Science - Anatomy and Human Biology</b> Available for Experienced-based entry	3*; FEB, JUL	UWA BP004 UWA MJD-ANHBY TISC UP004	75/24; WE & V or Q	MM+	Anatomist Exercise Physiologist Research Assistant
<b>Bachelor of Science - Biochemistry and Molecular Biology</b> Available for Experienced-based entry	3*; FEB, JUL	UWA BP004 UWA MJD-BCHMB TISC UP004	75/24; WE & V or Q	MM+ and C2	Biochemist Clinical Scientist Nanotechnologist
<b>Bachelor of Science - Exercise and Health</b> Available for Experienced-based entry	3*; FEB, JUL	UWA BP004 UWA MJD-EXHSC TISC UP004	75/24; WE & V or Q	MA+	Health Adviser Health and Fitness Coordinator Sports Development Officer
<b>Bachelor of Science - Genetics</b> Available for Experienced-based entry	3*; FEB, JUL	UWA BP004 UWA MJD-GENET TISC UP004	75/24; WE & V or Q	MM+ and C2	Forensic Scientist Genetic Counsellor Geneticist
<b>Bachelor of Science - Microbiology and Immunology</b> Available for Experienced-based entry	3*; FEB, JUL	UWA BP004 UWA MJD-MCBIM TISC UP004	75/24; WE & V or Q	MA+, HB/B+ and C2	Environmental Testing Scientist Food Safety Scientist Laboratory Technician
<b>Bachelor of Science - Neuroscience</b> Available for Experienced-based entry	3*; FEB, JUL	UWA BP004 UWA MJD-NEURS TISC UP004	75/24; WE & V or Q	MM+ and C+	Laboratory Manager Neuroscientist Researcher
<b>Bachelor of Science - Physiology</b> Available for Experienced-based entry	3*; FEB, JUL	UWA BP004 UWA MJD-PHYGY TISC UP004	75/24; WE & V or Q	MM+ and C+	Clinical Physiologist Health and Safety Officer Medical Technician
<b>Bachelor of Science - Sport Science</b> Available for Experienced-based entry	3*; FEB, JUL	UWA BP004 UWA MJD-SPTSC TISC UP004	75/24; WE & V or Q	MA+	Sports and Recreation Officer Sports Entrepreneur Sport Scientist
<b>Bachelor of Philosophy (Honours)</b>	4*; FEB	UWA BH005 TISC UH005	98/38; N/A	Refer to relevant major/s	Biotechnologist Medical Researcher Neuroscientist
<b>SPECIALISED DEGREES</b>					
<b>Bachelor of Biomedicine (Specialised)</b>	3; FEB	UWA BP056 TISC UP056	92/32 (competitive entry); N/A	MA+ and C+	Audiologist <sup>1</sup> Dentist <sup>1</sup> Genetic Counsellor <sup>1</sup> Medical Practitioner <sup>1</sup> Medical Scientist Optometrist <sup>1</sup> Pharmacist <sup>1</sup> Podiatrist <sup>1</sup>
<b>Bachelor of Biomedicine (Specialised) - Integrated Dental Sciences (Extended Major)<sup>3</sup></b>	3; FEB	UWA BP056 UWA MJD-DENTS TISC UD056	98/38 (competitive entry); N/A	MA+ and C+	Dentist <sup>1</sup>
<b>Bachelor of Biomedicine (Specialised) - Integrated Medical Sciences and Clinical Practice (Extended Major)<sup>4</sup></b>	3; FEB	UWA BP056 UWA MJD-IMSCP TISC UG056	98/38 (competitive entry); N/A	MA+ and C+	Medical Practitioner <sup>1</sup>
<b>Bachelor of Biomedicine (Specialised) - Medical Science (Extended Major)</b>	3; FEB	UWA BP056 UWA MJD-MEDSI TISC UP056	92/32 (competitive entry); N/A	MA+ and C+	Medical Scientist
<b>Bachelor of Biomedicine (Specialised) - Podiatric Health and Medical Sciences (Extended Major)<sup>5</sup></b>	3; FEB	UWA BP056 UWA MJD-PHMSC TISC UR056	94/33 (competitive entry); N/A	MA+ and C+	Podiatrist <sup>1</sup>

Refer to the Course Key Index on page 43 for reference to citations.

COURSE	FULL-TIME (YEARS); INTAKE	COURSE CODES	ATAR/IB; STAT	PREREQUISITE/S	CAREER OPPORTUNITIES
<b>Bachelor of Human Sciences - Human Science and Neuroscience (Extended Major)</b>	3*; FEB, JUL	UWA BP031 UWA MJD-HSNEM TISC UP031	80/26; N/A	MM+ and C2	Clinical Physiologist Health and Safety Officer Research Scientist
<b>Bachelor of Human Sciences - Human Sciences and Data Analytics (Extended Major)</b>	3*; FEB, JUL	UWA BP031 UWA MJD-HSDEM TISC UP031	80/26; N/A	MM+ and C2	Analyst Health Promotion Officer Research Officer
<b>Bachelor of Human Sciences - Human Sciences (Anatomy and Physiology) (Extended Major)</b>	3*; FEB, JUL	UWA BP031 UWA MJD-HSANP TISC UP031	80/26; N/A	MM+ and C2	Anatomist Health Policy Officer Physiologist
<b>Bachelor of Molecular Sciences - Biochemistry of Nutrition (Extended Major)</b>	3*; FEB, JUL	UWA BP028 UWA MJD-BCNDM TISC UP028	80/26; N/A	MM+ and C2	Food Scientist Nutritional Biochemist Synthetic Biologist
<b>Bachelor of Molecular Sciences - Molecular Life Sciences (Extended Major)</b>	3*; FEB, JUL	UWA BP028 UWA MJD-MLSMD TISC UP028	80/26; N/A	MM+ and C2	Biochemist Molecular Biologist Plant Biotechnologist
<b>Bachelor of Social Work (Honours) - Social Work (Extended Major)</b>	4; FEB, JUL	UWA BH017 UWA MJD-SOCWK TISC UH017	75/24; N/A	None	Child Protection Worker Mental Health Worker NDIS Support Coordinator Social Worker
<b>Bachelor of Sport and Exercise Sciences - Sport Science, Exercise and Health (Extended Major)</b>	3*; FEB, JUL	UWA BP026 UWA MJD-SEHDM TISC UP026	80/26; N/A	MA+	Exercise Scientist Performance Adviser Sports Coach
<b>COMBINED BACHELOR'S DEGREE</b>					
<b>Bachelor of Modern Languages and Bachelor of Biomedical Science</b>	4*; FEB, JUL	UWA CB032 TISC UB032	82/27; N/A	Refer to relevant major/s	Biomedical Researcher <sup>1</sup> Journalist/Science Communicator Laboratory Technician
<b>COMBINED BACHELOR'S AND MASTER'S DEGREES</b>					
<b>Bachelor of Human Sciences and Master of Bioinformatics</b>	4*; FEB	UWA CM021 TISC UM021	90/30; N/A	MM+ and C	Bioinformatician Data Analyst Data Scientist
<b>Bachelor of Molecular Sciences and Master of Bioinformatics</b>	4*; FEB	UWA CM024 TISC UM024	90/30; N/A	MM+ and C	Bioinformatician Data Analyst Data Scientist
<b>Bachelor of Molecular Sciences and Master of Biomedical Science</b>	4*; FEB	UWA CM004 TISC UM004	90/30; N/A	MM+ and C	Biomedical Scientist Food Scientist Nutritional Biochemist
<b>Bachelor of Molecular Sciences and Master of Biotechnology</b>	4*; FEB	UWA CM007 TISC UM007	90/30; N/A	MM+ and C	Biotechnologist Molecular Biologist Microbiologist
<b>Bachelor of Sport and Exercise Sciences and Master of Applied Human Performance Science</b>	4*; FEB	UWA CM019 TISC UM019	90/30; N/A	MA+	Athletics Coach Exercise Scientist Performance Specialist
<b>Bachelor of Sport and Exercise Sciences and Master of Clinical Exercise Physiology</b>	4; FEB	UWA CM018 TISC UM018	90/30; N/A	MA+	Exercise Physiologist Exercise Scientist Rehabilitation Specialist
<b>Bachelor of Sport and Exercise Sciences and Master of Public Health</b>	4*; FEB	UWA CM017 TISC UM017	90/30; N/A	MA+	Exercise Physiologist Health Promotion Officer Health Researcher

COURSE	FULL-TIME (YEARS); INTAKE	COURSE CODES	ATAR/IB; STAT	PREREQUISITE/S	CAREER OPPORTUNITIES
<b>ASSURED PATHWAYS</b>					
Doctor of Dental Medicine via Bachelor of Biomedicine (Specialised)	3+3; JAN	UWA BP056 UWA 91860 TISC UD056	98/38 (competitive entry); N/A	C+ and MA+	Dentist <sup>6</sup>
Doctor of Podiatric Medicine via Bachelor of Biomedicine (Specialised)	3+3; JAN	UWA BP056 UWA 91870 TISC UR056	94/33 (competitive entry); N/A	C+ and MA+	Podiatrist <sup>7</sup>
Master of Pharmacy via Bachelor of Biomedical Science	3+2; JAN	UWA BP006 UWA 51500 TISC UC006	94/33 (competitive entry); N/A	C+ and MA+ and HB/B+	Pharmacist
Master of Public Health via Bachelor of Biomedical Science	3*+1.5-2*; FEB, JUL	UWA BP006 UWA 91550 (1.5 years) or 92550 (2 years) TISC UE006	92/32; N/A	Refer to relevant major/s	Health and Welfare Services Manager Health Promotion Officer Policy Analyst
Master of Public Health via Bachelor of Philosophy (Honours)	4*+1.5-2*; FEB, JUL	UWA BH005 UWA 91550 (1.5 years) or 92550 (2 years) TISC UE005	98/38 (competitive entry); N/A	Refer to relevant major/s	Health and Welfare Services Manager Health Promotion Officer Policy Analyst
Doctor of Medicine via Bachelor of Biomedicine (Specialised)	6; FEB	UWA BP056 UWA 91850 TISC UG056	98/38 (competitive entry); N/A	C+ and MA+	Doctor Medical Specialist <sup>8</sup>

Refer to the Course Key Index on page 43 for reference to citations.

### NEW COURSE

## Bachelor of Social Work (Honours)

This course will develop your skills and knowledge to bring about positive change and socially just outcomes in the wellbeing of individuals, organisations and communities. You'll be taught using creative case study and evidence-informed methodologies that'll equip you with the skills to advocate for and improve lives.

Visit [uwa.edu.au/study/bachelor-of-social-work](http://uwa.edu.au/study/bachelor-of-social-work)





## Humanities and Social Sciences

By studying Humanities and Social Sciences, you'll gain a critical understanding of how society shapes, and is shaped by, culture, politics, geography, economics, media, history, language, the environment and more. You'll develop the knowledge and skills to define complex problems, and identify and design solutions, while being supported in your passion to drive and implement change.



[uwa.edu.au/study/areas/humanities-social-sciences](http://uwa.edu.au/study/areas/humanities-social-sciences)

COURSE	FULL-TIME (YEARS); INTAKE	COURSE CODES	ATAR/IB; STAT	PREREQUISITE/S	CAREER OPPORTUNITIES
<b>COMPREHENSIVE DEGREES</b>					
<b>Bachelor of Arts</b> Available for Experienced-based entry	3*; FEB, JUL	UWA BP001 TISC UP001	75/24; WE & V or Q	Refer to relevant major/s	Content Creator Journalist Policy Maker
<b>Bachelor of Arts - Anthropology</b> Available for Experienced-based entry	3*; FEB, JUL	UWA BP001 UWA MJD-ANTHR TISC UP001	75/24; WE & V or Q	None	Anthropologist Archaeologist Social Researcher
<b>Bachelor of Arts - Applied Human Geography</b> Available for Experienced-based entry	3*; FEB, JUL	UWA BP001 UWA MJD-APHGY TISC UP001	75/24; WE & V or Q	None	Aid and Development Worker Regional Development Officer Socio-Demographic Analyst
<b>Bachelor of Arts - Archaeology</b> Available for Experienced-based entry	3*; FEB, JUL	UWA BP001 UWA MJD-ARCGY TISC UP001	75/24; WE & V or Q	None	Consultant Archaeologist Heritage Officer Museum Curator
<b>Bachelor of Arts - Asian Studies</b> Available for Experienced-based entry	3*; FEB, JUL	UWA BP001 UWA MJD-ASSTD TISC UP001	75/24; WE & V or Q	None	Diplomat Foreign Correspondent International Lawyer
<b>Bachelor of Arts - Chinese Studies</b> Available for Experienced-based entry	3*; FEB	UWA BP001 UWA MJD-CHNSB TISC UP001	75/24; WE & V or Q	None	Cultural Interpreter Financial Dealer Foreign Affairs Officer
<b>Bachelor of Arts - Classics and Ancient History</b> Available for Experienced-based entry	3*; FEB, JUL	UWA BP001 UWA MJD-CLANH TISC UP001	75/24; WE & V or Q	None	Journalist Public Sector Officer Teacher <sup>1</sup>
<b>Bachelor of Arts - Communication and Media Studies</b> Available for Experienced-based entry	3*; FEB, JUL	UWA BP001 UWA MJD-CMMST TISC UP001	75/24; WE & V or Q	None	Advertising Strategist Media Adviser Video and Content Producer
<b>Bachelor of Arts - Contemporary Popular Music</b> Available for Experienced-based entry	3*; FEB, JUL	UWA BP001 UWA MJD-MUSCO UWA UP001	75/24; WE & V or Q	MUS	Event and Artist Management Recording Artist Songwriter
<b>Bachelor of Arts - Criminology</b> Available for Experienced-based entry	3*; FEB, JUL	UWA BP001 UWA MJD-CRIMN TISC UP001	75/24; WE & V or Q	None	Community Development Worker Corrective Services Officer Policy Adviser
<b>Bachelor of Arts - English and Literary Studies</b> Available for Experienced-based entry	3*; FEB, JUL	UWA BP001 UWA MJD-EGCST TISC UP001	75/24; WE & V or Q	None	Educator Publisher Writer
<b>Bachelor of Arts - Fine Arts</b> Available for Experienced-based entry	3*; FEB, JUL	UWA BP001 UWA MJD-FNART TISC UP001	75/24; WE & V or Q	None	Artistic Director Curator Film Director
<b>Bachelor of Arts - French Studies</b> Available for Experienced-based entry	3*; FEB, JUL	UWA BP001 UWA MJD-FRNHB TISC UP001	75/24; WE & V or Q	None	Diplomat Language Teacher <sup>1</sup> Translator

COURSE	FULL-TIME (YEARS); INTAKE	COURSE CODES	ATAR/IB; STAT	PREREQUISITE/S	CAREER OPPORTUNITIES
<b>Bachelor of Arts - Gender Studies</b> Available for Experienced-based entry	3*; FEB, JUL	UWA BPO01 UWA MJD-GNWST TISC UPO01	75/24; WE & V or Q	None	Educator Human Resources Manager Policy Maker
<b>Bachelor of Arts - German Studies</b> Available for Experienced-based entry	3*; FEB, JUL	UWA BPO01 UWA MJD-GRMNB TISC UPO01	75/24; WE & V or Q	None	Diplomat Journalist Translator
<b>Bachelor of Arts - History</b> Available for Experienced-based entry	3*; FEB, JUL	UWA BPO01 UWA MJD-HISTY TISC UPO01	75/24; WE & V or Q	None	Archivist Conservation Officer Teacher <sup>1</sup>
<b>Bachelor of Arts - History of Art</b> Available for Experienced-based entry	3*; FEB, JUL	UWA BPO01 UWA MJD-HYART TISC UPO01	75/24; WE & V or Q	None	Curators Gallery Directors Museum Administrators
<b>Bachelor of Arts - Indigenous Knowledge, History and Heritage</b> Available for Experienced-based entry	3*; FEB, JUL	UWA BPO01 UWA MJD-INKHH TISC UPO01	75/24; WE & V or Q	None	Curator Environmental Adviser Parliamentarian
<b>Bachelor of Arts - Indonesian Studies</b> Available for Experienced-based entry	3*; FEB	UWA BPO01 UWA MJD-INDNB TISC UPO01	75/24; WE & V or Q	None	Cultural Interpreter Foreign Affairs and Trade Officer Intelligence Analyst
<b>Bachelor of Arts - Italian Studies</b> Available for Experienced-based entry	3*; FEB, JUL	UWA BPO01 UWA MJD-ITLNB TISC UPO01	75/24; WE & V or Q	None	Cultural Interpreter Journalist Teacher <sup>1</sup>
<b>Bachelor of Arts - Japanese Studies</b> Available for Experienced-based entry	3*; FEB	UWA BPO01 UWA MJD-JPNSB TISC UPO01	75/24; WE & V or Q	None	Foreign Affairs and Trade Officer Journalist Translator/Interpreter
<b>Bachelor of Arts - Korean Studies</b> Available for Experienced-based entry	3*; FEB	UWA BPO01 UWA MJD-KOREB TISC UPO01	75/24; WE & V or Q	None	Cultural Interpreter Diplomat Teacher <sup>1</sup>
<b>Bachelor of Arts - Law and Society</b> Available for Experienced-based entry	3*; FEB, JUL	UWA BPO01 UWA MJD-LWSOC TISC UPO01	75/24; WE & V or Q	None	Community Development Worker Human Resources Professional Policy Adviser
<b>Bachelor of Arts - Linguistics</b> Available for Experienced-based entry	3*; FEB, JUL	UWA BPO01 UWA MJD-LINGO TISC UPO01	75/24; WE & V or Q	None	Community Linguist Forensic Linguist Speech Therapist
<b>Bachelor of Arts - Music: Electronic Music and Sound Design</b> Available for Experienced-based entry	3*; FEB, JUL	UWA BPO01 UWA MJD-MEMSD TISC UPO01	75/24; WE & V or Q	None	Concert/Exhibition Director Film/Game Composer Music Composer/ Producer
<b>Bachelor of Arts - Music: General Studies</b> Available for Experienced-based entry	3*; FEB, JUL	UWA BPO01 UWA MJD-MSTGM TISC UPO01	75/24; WE & V or Q	MUS1	Music Professional Musician Music Teacher <sup>1</sup>
<b>Bachelor of Arts - Music: Music Studies</b> Available for Experienced-based entry	3*; FEB, JUL	UWA BPO01 UWA MJD-MUSST TISC UPO01	75/24; WE & V or Q	MUS2	Artistic Director Music Teacher <sup>1</sup> Performer, Composer, DJ or Creative Artist
<b>Bachelor of Arts - Music and Society</b> Available for Experienced-based entry	3*; FEB, JUL	UWA BPO01 UWA MJD-MUSMS UWA UPO01	75/24; WE & V or Q	None	Arts and Cultural Sector Worker Community Organisation Worker Cultural Historian
<b>Bachelor of Arts - Philosophy</b> Available for Experienced-based entry	3*; FEB, JUL	UWA BPO01 UWA MJD-PHILY TISC UPO01	75/24; WE & V or Q	None	Journalist Lawyer Policy and Planning Manager

COURSE	FULL-TIME (YEARS); INTAKE	COURSE CODES	ATAR/IB; STAT	PREREQUISITE/S	CAREER OPPORTUNITIES
<b>Bachelor of Arts - Political Science and International Relations</b> Available for Experienced-based entry	3*; FEB, JUL	UWA BP001 UWA MJD-POLSC TISC UP001	75/24; WE & V or Q	None	Journalist Parliamentarian Policy Officer
<b>Bachelor of Arts - Psychological and Behavioural Sciences</b> Available for Experienced-based entry	3*; FEB, JUL	UWA BP001 UWA MJD-PSYCH TISC UP001	75/24; WE & V or Q	None	Counsellor Health and Welfare Adviser Psychologist <sup>2</sup>
<b>Bachelor of Arts - Science and Technology in Society</b> Available for Experienced-based entry	3*; FEB, JUL	UWA BP001 UWA MJD-SCITS TISC UP001	75/24; WE & V or Q	None	Communications Officer Science Information Officer Science Policy Adviser
<b>Bachelor of Arts - Spanish Studies</b> Available for Experienced-based entry	3*; FEB, JUL	UWA BP001 UWA MJD-SPNHB TISC UP001	75/24; WE & V or Q	None	Cultural Interpreter Diplomat Teacher <sup>1</sup>
<b>Bachelor of Arts - Work and Employment Relations</b> Available for Experienced-based entry	3*; FEB, JUL	UWA BP001 UWA MJD-WKERL TISC UP001	75/24; WE & V or Q	None	Human Resource Professional Industrial Relations Officer Management Adviser Workplace Relations Adviser
<b>Bachelor of Biomedical Science - Aboriginal Health and Wellbeing</b> Available for Experienced-based entry	3*; FEB, JUL	UWA BP006 UWA MJD-ABHNB TISC UP006	80/26; WE & V or Q	MA+	Health Policy Adviser Health Promotions Officer Health and Welfare Services Manager Social Worker <sup>1</sup>
<b>Bachelor of Biomedical Science - Humanities in Health and Medicine</b> Available for Experienced-based entry	3*; FEB, JUL	UWA BP006 UWA MJD-HHMED TISC UP006	80/26; WE & V or Q	MA+	Community Health Practitioner Health Educator/ Researcher Healthcare Administrator
<b>Bachelor of Philosophy (Honours)</b>	4*; FEB	UWA BH005 TISC UH005	98/38; N/A	Refer to relevant major/s	Data Analyst Management Adviser Policy Analyst
<b>SPECIALISED DEGREES</b>					
<b>Bachelor of Human Rights - Human Rights (Extended Major)</b>	3*; FEB, JUL	UWA BP034 UWA MJD-HMRDM TISC UP034	85/28; N/A	None	Diplomat Journalist Public Policy Analyst
<b>Bachelor of International Relations - International Relations (Extended Major)</b>	3*; FEB, JUL	UWA BP058 UWA MJD-INTRL TISC UP058	85/28; N/A	None	Chief Executive Officer Diplomat Policy Analyst
<b>Bachelor of Modern Languages</b>	3*; FEB, JUL	UWA BP054 TISC UP054	80/26; N/A	None	Diplomat Foreign Affairs and Trade Officer Translator
<b>Bachelor of Modern Languages - Chinese Studies</b>	3*; FEB	UWA BP054 UWA MJD-CHNSB TISC UP054	80/26; N/A	None	Diplomat Foreign Affairs and Trade Officer Translator
<b>Bachelor of Modern Languages - French Studies</b>	3*; FEB, JUL	UWA BP054 UWA MJD-FRNHB TISC UP054	80/26; N/A	None	Diplomat Foreign Affairs and Trade Officer Translator
<b>Bachelor of Modern Languages - German Studies</b>	3*; FEB, JUL	UWA BP054 UWA MJD-GRMNB TISC UP054	80/26; N/A	None	Diplomat Foreign Affairs and Trade Officer Translator



COURSE	FULL-TIME (YEARS); INTAKE	COURSE CODES	ATAR/IB; STAT	PREREQUISITE/S	CAREER OPPORTUNITIES
<b>Bachelor of Modern Languages - Indonesian Studies</b>	3*; FEB	UWA BP054 UWA MJD-INDNB TISC UP054	80/26; N/A	None	Diplomat Foreign Affairs and Trade Officer Translator
<b>Bachelor of Modern Languages - Italian Studies</b>	3*; FEB, JUL	UWA BP054 UWA MJD-ITLNB TISC UP054	80/26; N/A	None	Diplomat Foreign Affairs and Trade Officer Translator
<b>Bachelor of Modern Languages - Japanese Studies</b>	3*; FEB	UWA BP054 UWA MJD-JPNSB TISC UP054	80/26; N/A	None	Diplomat Foreign Affairs and Trade Officer Translator
<b>Bachelor of Modern Languages - Korean Studies</b>	3*; FEB	UWA BP054 UWA MJD-KOREB TISC UP054	80/26; N/A	None	Diplomat Foreign Affairs and Trade Officer Translator
<b>Bachelor of Modern Languages - Spanish Studies</b>	3*; FEB, JUL	UWA BP054 UWA MJD-SPNHB TISC UP054	80/26; N/A	None	Diplomat Foreign Affairs and Trade Officer Translator
<b>Bachelor of Philosophy, Politics and Economics - Philosophy, Politics and Economics (Extended Major)</b>	3*; FEB, JUL	UWA BP012 UWA MJD-PPEDM TISC UP012	90/30; N/A	None	Diplomat Economic/Political Journalist Policy Analyst
<b>Bachelor of Social and Environmental Sustainability - Social and Environmental Sustainability (Extended Major)</b>	3*; FEB, JUL	UWA BP062 UWA MJD-SUSTA TISC UP062	75/24; N/A	None	Environmental, Social and Governance Analyst Sustainability Consultant
<b>COMBINED BACHELOR'S DEGREES</b>					
<b>Bachelor of Agricultural Science and Bachelor of Arts</b>	4*; FEB, JUL	UWA CB009 TISC UB009	85/28; N/A	Refer to relevant major/s	Agricultural Adviser Conservation Officer Sustainability Adviser
<b>Bachelor of Engineering (Honours) and Bachelor of Arts</b>	5**; FEB, JUL	UWA CB034 TISC UB034	88/30; N/A	Refer to relevant major/s	Business Development Manager Engineer Project Manager Technology Journalist
<b>Bachelor of Engineering (Honours) and Bachelor of Modern Languages</b>	5.25**; FEB, JUL	UWA CB030 TISC UB030	88/30; N/A	Refer to relevant major/s	Engineer Global Contract Negotiator Translator/Interpreter
<b>Bachelor of Engineering (Honours) and Bachelor of Philosophy (Honours)</b>	5.5-6.5*; FEB, JUL	UWA CB014 TISC UB014	98/38; N/A	Refer to relevant major/s	Engineer Researcher Jobs related to your BPhil (Hons)
<b>Bachelor of Environmental Science and Bachelor of Arts</b>	4*; FEB, JUL	UWA CB008 TISC UB008	85/28; N/A	Refer to relevant major/s	Environmental Officer Project Manager Sustainability Adviser
<b>Bachelor of Human Rights and Bachelor of Arts</b>	4*; FEB, JUL	UWA CB022 TISC UB022	87/30; N/A	Refer to relevant major/s	Diplomat Journalist Public Policy Analyst
<b>Bachelor of Human Rights and Bachelor of Commerce</b>	4*; FEB, JUL	UWA CB023 TISC UB023	87/30; N/A	Refer to relevant major/s	Economic Analyst Management Adviser Public Policy Adviser
<b>Bachelor of Modern Languages and Bachelor of Arts</b>	4*; FEB, JUL	UWA CB026 TISC UB026	82/27; N/A	Refer to relevant major/s	Journalist Policy Adviser Research Officer

COURSE	FULL-TIME (YEARS); INTAKE	COURSE CODES	ATAR/IB; STAT	PREREQUISITE/S	CAREER OPPORTUNITIES
<b>Bachelor of Modern Languages and Bachelor of Biomedical Science</b>	4*; FEB, JUL	UWA CB032 TISC UB032	82/27; N/A	Refer to relevant major/s	Biomedical Researcher <sup>1</sup> Journalist/Science Communicator Laboratory Technician
<b>Bachelor of Modern Languages and Bachelor of Business</b>	4*; FEB, JUL	UWA CB028 TISC UB028	80/26; N/A	Refer to relevant major/s	Diplomat International Market Analyst Small Business Entrepreneur
<b>Bachelor of Modern Languages and Bachelor of Science</b>	4*; FEB, JUL	UWA CB029 TISC UB029	82/27; N/A	Refer to relevant major/s	Agricultural Scientist Environmental Adviser Neuroscientist
<b>Bachelor of Philosophy (Honours) and Bachelor of Modern Languages</b>	5.5*; FEB	UWA CB031 TISC UB031	98/38; N/A	Refer to relevant major/s	Diplomat Management Adviser Policy Analyst
<b>Bachelor of Philosophy, Politics and Economics and Bachelor of Arts</b>	4*; FEB, JUL	UWA CB012 TISC UB012	92/32; N/A	None	Economic/Political Journalist Management Adviser Politician
<b>Bachelor of Philosophy, Politics and Economics and Bachelor of Commerce</b>	4*; FEB, JUL	UWA CB017 TISC UB017	92/32; N/A	Refer to relevant major/s	Management Adviser Managing Director Policy Adviser
<b>Bachelor of Psychology and Bachelor of Arts</b>	4*; FEB, JUL	UWA CB011 TISC UB011	85/28; N/A	None	Human Resource Professional Psychologist <sup>2</sup> Social Worker <sup>1</sup>
<b>ASSURED PATHWAYS</b>					
<b>Master of Translation Studies via Bachelor of Arts</b>	3*+2*; FEB, JUL	UWA BP001 UWA I2520 TISC UN001	90/30; N/A	None	Intercultural Consultant Language Services Manager Professional Translator
<b>Master of Translation Studies via Bachelor of Philosophy (Honours)</b>	4*+2*; FEB	UWA BH005 UWA I2520 TISC UN005	98/38; N/A	Refer to relevant major/s	Intercultural Consultant Language Services Manager Professional Translator

Refer to the Course Key Index on page 43 for reference to citations.

## Become a bilingual citizen of the world at the largest language hub in WA

When choosing to study a language at UWA, you'll learn to translate not just words, but ideas. During your studies you'll be immersed in another language, learn to see the world in a new way and move between cultures with ease. You can also put your skills into practice by travelling overseas with one of our many learning opportunities, from short courses to long-term student exchange programs. After completing an undergraduate language major of your choice, you could continue on to our Master of Translation Studies (the only course of its kind in Western Australia) to gain a prestigious professional qualification.

Visit [uwa.edu.au/study/uwa-language-hub](http://uwa.edu.au/study/uwa-language-hub)



## Law

Our Law School provides a high quality, world-class education in law and criminology, equipping you with the knowledge and skills necessary for a successful career.

[uwa.edu.au/study/areas/law](http://uwa.edu.au/study/areas/law)



COURSE	FULL-TIME (YEARS); INTAKE	COURSE CODES	ATAR/IB; STAT	PREREQUISITE/S	CAREER OPPORTUNITIES
<b>COMPREHENSIVE DEGREES</b>					
<b>Bachelor of Arts - Criminology</b> Available for Experienced-based entry	3*; FEB, JUL	UWA BP001 UWA MJD-CRIMN TISC UP001	75/24; WE & V or Q	None	Development Worker Policy Adviser Prevention Officer
<b>Bachelor of Arts - Law and Society</b> Available for Experienced-based entry	3*; FEB, JUL	UWA BP001 UWA MJD-LWSOC TISC UP001	75/24; WE & V or Q	None	HR Adviser Policy Adviser Youth Worker
<b>Bachelor of Commerce - Business Law</b> Available for Experienced-based entry	3*; FEB, JUL	UWA BP002 UWA MJD-BSLAW TISC UP002	80/26; WE & V or Q	None	Business Adviser Consultant Investment Banker
<b>Bachelor of Philosophy (Honours)</b>	4*; FEB	UWA BH005 TISC UH005	98/38; N/A	Refer to relevant major/s	Business Adviser Corrective Services Officer Political Adviser
<b>SPECIALISED DEGREE</b>					
<b>Bachelor of Criminology and Criminal Justice - Criminology and Criminal Justice (Extended Major)</b>	3*; FEB, JUL	UWA BP050 UWA MJD-CRMDM TISC UP050	80/26; N/A	None	Corrective Services Officer Development Worker Political Adviser
<b>ASSURED PATHWAYS</b>					
<b>All UWA undergraduate Bachelor's degrees can articulate into the Juris Doctor.</b>	3*+3*; FEB	Refer to relevant bachelor's degree	96/36 or 98*/38^ N/A	Refer to relevant major/s	Contract Administrator Diplomat Lawyer

Refer to the Course Key Index on page 43 for reference to citations.

## Build your industry experience while you study

Stand out to future employers by getting real-world experience while completing your degree through UWA's Work Integrated Learning (WIL) placement program. Just like an internship, a WIL placement can help you gain industry knowledge, develop career-ready skills, and network with industry professionals as part of your course or as a co-curricular activity.

Visit [uwa.edu.au/students/WIL](http://uwa.edu.au/students/WIL)





## Music and Fine Arts

Release your full creative potential and set yourself up for a future fuelled by imagination and innovation. Whether you see yourself as a performer, curator, director or other artistic professional, immerse yourself in your area of expertise and become part of the creative economy.



[uwa.edu.au/study/areas/music-fine-arts](http://uwa.edu.au/study/areas/music-fine-arts)

COURSE	FULL-TIME (YEARS); INTAKE	COURSE CODES	ATAR/IB; STAT	PREREQUISITE/S	CAREER OPPORTUNITIES
<b>COMPREHENSIVE DEGREES</b>					
<b>Bachelor of Arts</b> Available for Experienced-based entry	3*; FEB, JUL	UWA BP001 TISC UP001	75/24; WE & V or Q	None	Content Creator Human Service Provider Policy Maker
<b>Bachelor of Arts - Contemporary Popular Music</b> Available for Experienced-based entry	3*; FEB, JUL	UWA BP001 UWA MJD-MUSCO UWA UP001	75/24; WE & V or Q	MUS	Event and Artist Management Recording Artist Songwriter
<b>Bachelor of Arts - Fine Arts</b> Available for Experienced-based entry	3*; FEB, JUL	UWA BP001 UWA MJD-FNART TISC UP001	75/24; WE & V or Q	None	Artistic Director Curator Film Director
<b>Bachelor of Arts - Music: Electronic Music and Sound Design</b> Available for Experienced-based entry	3*; FEB, JUL	UWA BP001 UWA MJD-MEMSD TISC UP001	75/24; WE & V or Q	None	Concert/Exhibition Director Film/Game Composer Music Composer/ Producer
<b>Bachelor of Arts - Music: General Studies</b> Available for Experienced-based entry	3*; FEB, JUL	UWA BP001 UWA MJD-MSTGM TISC UP001	75/24; WE & V or Q	MUS1	Music Professional Musician Music Teacher <sup>1</sup>
<b>Bachelor of Arts - Music: Music Studies</b> Available for Experienced-based entry	3*; FEB, JUL	UWA BP001 UWA MJD-MUSST TISC UP001	75/24; WE & V or Q	MUS2	Artistic Director Music Teacher <sup>1</sup> Performer, Composer, DJ or Creative Artist
<b>Bachelor of Arts - Music and Society</b> Available for Experienced-based entry	3*; FEB, JUL	UWA BP001 UWA MJD-MUSMS UWA UP001	75/24; WE & V or Q	None	Arts and Cultural Sector Worker Community Organisation Worker Cultural Historian
<b>Bachelor of Philosophy (Honours)</b>	4*; FEB	UWA BH005 TISC UH005	98/38; N/A	Refer to relevant major/s	Artistic Director Music Producer Professional Artist
<b>SPECIALISED DEGREE</b>					
<b>Bachelor of Music - Music (Extended Major)</b>	3*; FEB, JUL	UWA BP008 UWA MJD-MUSDM ISC UP008	75/24; WE & V or Q	MUS3	Academic Music Teacher <sup>1</sup> Performer, Composer, DJ or Creative Artist

Refer to the Course Key Index on page 43 for reference to citations.

## Concerts and events

The Conservatorium of Music is home to more than 200 events, free and ticketed, each calendar year which showcase amazing work from our students, staff and industry professionals and more.

Visit [music.uwa.edu.au](http://music.uwa.edu.au)



## Natural and Physical Sciences

Delve into a wide range of disciplines including agriculture and environment, biology and chemistry, earth and oceans, physics and mathematics. From agribusiness to zoology, discover the importance of science through a deeper understanding of the world we live in, and by developing innovative solutions that tackle global challenges to advance humanity.



[uwa.edu.au/study/areas/natural-physical-sciences](http://uwa.edu.au/study/areas/natural-physical-sciences)

COURSE	FULL-TIME (YEARS); INTAKE	COURSE CODES	ATAR/IB; STAT	PREREQUISITE/S	CAREER OPPORTUNITIES
<b>COMPREHENSIVE DEGREES</b>					
<b>Bachelor of Biomedical Science</b> Available for Experienced-based entry	3*; FEB, JUL	UWA BPO06 TISC UP006	80/26; WE & V or Q	Refer to relevant major/s	Biochemist Biomedical Researcher Medical Researcher
<b>Bachelor of Philosophy (Honours)</b>	4*; FEB	UWA BH005 TISC UH005	98/38; N/A	Refer to relevant major/s	Refer to relevant major/s
<b>Bachelor of Science</b> Available for Experienced-based entry	3*; FEB, JUL	UWA BPO04 TISC UP004	75/24; WE & V or Q	Refer to relevant major/s	Refer to relevant major/s
<b>AGRICULTURE AND ENVIRONMENT - COMPREHENSIVE DEGREES</b>					
<b>Bachelor of Science - Agribusiness</b> Available for Experienced-based entry	3*; FEB, JUL	UWA BPO04 UWA MJD-AGBUS TISC UP004	75/24; WE & V or Q	MM+	Agricultural Consultant Agricultural Scientist Conservation Officer
<b>Bachelor of Science - Agricultural Science</b> Available for Experienced-based entry	3*; FEB, JUL	UWA BPO04 UWA MJD-AGSCI TISC UP004	75/24; WE & V or Q	MM+ and C+	Agribusiness Adviser Agricultural Consultant Agricultural Scientist
<b>Bachelor of Science - Agricultural Technology</b> Available for Experienced-based entry	3*; FEB, JUL	UWA BPO04 UWA MJD-AGTEC TISC UP004	75/24; WE & V or Q	MM+ and C+	AgTech Specialist Agricultural Consultant Agricultural Scientist
<b>Bachelor of Science - Conservation Biology</b> Available for Experienced-based entry	3*; FEB, JUL	UWA BPO04 UWA MJD-CONBI TISC UP004	75/24; WE & V or Q	MM+	Conservation Biologist Conservation Officer Environmental Adviser
<b>Bachelor of Science - Environmental Management</b> Available for Experienced-based entry	3*; FEB, JUL	UWA BPO04 UWA MJD-ENVMT TISC UP004	75/24; WE & V or Q	MM+	Conservation Planner Environmental Adviser Environmental Analyst
<b>Bachelor of Science - Environmental Science</b> Available for Experienced-based entry	3*; FEB, JUL	UWA BPO04 UWA MJD-ENVSC TISC UP004	75/24; WE & V or Q	MM+ and C+	Conservation Officer Environmental Adviser Environmental Scientist
<b>Bachelor of Science - Geographical Sciences</b> Available for Experienced-based entry	3*; FEB, JUL	UWA BPO04 UWA MJD-GGRPY TISC UP004	75/24; WE & V or Q	MM	Environmental Adviser Landscape Planner Sustainability Adviser
<b>AGRICULTURE AND ENVIRONMENT - SPECIALISED DEGREES</b>					
<b>Bachelor of Agribusiness - Agribusiness and Agricultural Science (Extended Major)</b>	3*; FEB, JUL	UWA BPO20 UWA MJD-AGBDM TISC UP020	80/26; N/A	MM+	Business Consultant Financial Analyst Policy Analyst
<b>Bachelor of Agricultural Science - Agricultural Science and Technology (Extended Major)</b>	3*; FEB, JUL	UWA BP019 UWA MJD-AGTDM TISC UP019	80/26; N/A	MM+ and C+	Agricultural Consultant Agricultural Scientist AgTech Specialist
<b>Bachelor of Biological Science - Wildlife Conservation (Extended Major)</b>	3*; FEB, JUL	UWA BPO25 UWA MJD-WLCDM TISC UP025	80/26; N/A	MM+	Conservation Officer Fauna Consultant Wildlife Officer
<b>Bachelor of Environmental Science - Environmental Science and Ecology (Extended Major)</b>	3*; FEB, JUL	UWA BPO22 UWA MJD-ENVEM TISC UP022	80/26; N/A	MM+ and C+	Conservation Officer Ecologist Environmental Adviser
<b>Bachelor of Environmental Science - Environmental Science and Management (Extended Major)</b>	3*; FEB, JUL	UWA BPO22 UWA MJD-ENVDM TISC UP022	80/26; N/A	MM+ and C+	Conservation Planner Environmental Adviser Soil Scientist

COURSE	FULL-TIME (YEARS); INTAKE	COURSE CODES	ATAR/IB; STAT	PREREQUISITE/S	CAREER OPPORTUNITIES
<b>Bachelor of Geographical and Spatial Science – Geographical and Spatial Science (Extended Major)</b>	3*; FEB, JUL	UWA BP055 UWA MJD-GSSCI TISC UP055	80/26; N/A	MM+	GIS Officer GIS and Spatial Analyst Spatial Scientist
<b>AGRICULTURE AND ENVIRONMENT - COMBINED BACHELOR'S DEGREES</b>					
<b>Bachelor of Agribusiness and Bachelor of Science</b>	4*; FEB, JUL	UWA CB001 TISC UB001	85/28; N/A	Refer to relevant major/s	Agricultural Consultant Business Consultant Production Supervisor
<b>Bachelor of Agricultural Science and Bachelor of Arts</b>	4*; FEB, JUL	UWA CB009 TISC UB009	85/28; N/A	Refer to relevant major/s	Agricultural Consultant Conservation Officer Sustainability Adviser
<b>Bachelor of Agricultural Science and Bachelor of Commerce</b>	4*; FEB, JUL	UWA CB010 TISC UB010	88/30; N/A	Refer to relevant major/s	Business Consultant Land Economist Sustainability Adviser
<b>Bachelor of Agricultural Science and Bachelor of Science</b>	4*; FEB, JUL	UWA CB003 TISC UB003	85/28; N/A	Refer to relevant major/s	Agricultural Consultant AgTech Professional Land Economist
<b>Bachelor of Environmental Science and Bachelor of Arts</b>	4*; FEB, JUL	UWA CB008 TISC UB008	85/28; N/A	Refer to relevant major/s	Environmental Officer Sustainability Adviser
<b>Bachelor of Environmental Science and Bachelor of Commerce</b>	4*; FEB, JUL	UWA CB007 TISC UB007	88/30; N/A	Refer to relevant major/s	Business Consultant Environmental Adviser Research Scientist
<b>Bachelor of Environmental Science and Bachelor of Science</b>	4*; FEB, JUL	UWA CB002 TISC UB002	85/28; N/A	Refer to relevant major/s	Environmental Officer Soil Scientist Sustainability Adviser
<b>Bachelor of Modern Languages and Bachelor of Science</b>	4*; FEB, JUL	UWA CB029 TISC UB029	82/27; N/A	Refer to relevant major/s	Agricultural Scientist Environmental Adviser Neuroscientist
<b>AGRICULTURE AND ENVIRONMENT - COMBINED BACHELOR'S AND MASTER'S DEGREES</b>					
<b>Bachelor of Agribusiness and Master of Agricultural Economics</b>	4*; FEB	UWA CM014 TISC UM014	90/30; N/A	MM+	Agricultural Consultant Economist Policy Analyst
<b>Bachelor of Agricultural Science and Master of Agricultural Science</b>	4*; FEB	UWA CM013 TISC UM013	90/30; N/A	MM+ and C+	Agricultural Scientist Agronomist Plant Breeder
<b>Bachelor of Environmental Science and Master of Environmental Science</b>	4*; FEB	UWA CM008 TISC UM008	90/30; N/A	MM+ and C+	Environmental Adviser Geographer Spatial Data Analyst
<b>Bachelor of Geographical and Spatial Science and Master of Environmental Science</b>	4*; FEB, JUL	UWA CM032 TISC UM032	90/30; N/A	MM+	GIS Officer GIS and Spatial Analyst Sustainability Adviser
<b>BIOLOGY AND CHEMISTRY - COMPREHENSIVE DEGREES</b>					
<b>Bachelor of Biomedical Science - Anatomy and Human Biology</b> Available for Experienced-based entry	3*; FEB, JUL	UWA BP006 UWA MJD-ANHBY TISC UP006	80/26; WE & V or Q	MM+	Anatomist Exercise Physiologist Research Assistant
<b>Bachelor of Biomedical Science - Biochemistry and Molecular Biology</b> Available for Experienced-based entry	3*; FEB, JUL	UWA BP006 UWA MJD-BCHMB TISC UP006	80/26; WE & V or Q	MM+ and C2	Biochemist Microbiologist Molecular Biologist
<b>Bachelor of Biomedical Science - Genetics</b> Available for Experienced-based entry	3*; FEB, JUL	UWA BP006 UWA MJD-GENET TISC UP006	80/26; WE & V or Q	MM+ and C2	Biomedical Researcher Geneticist Genetic Counsellor
<b>Bachelor of Science - Botany</b> Available for Experienced-based entry	3*; FEB, JUL	UWA BP004 UWA MJD-BOTNY TISC UP004	75/24; WE & V or Q	MM+	Agricultural Consultant Botanist Environmental Scientist
<b>Bachelor of Science - Chemistry</b> Available for Experienced-based entry	3*; FEB, JUL	UWA BP004 UWA MJD-CHEMY TISC UP004	75/24; WE & V or Q	MM+ and C1	Analytical Chemist Environmental Chemist Synthetic Chemist

Refer to the Course Key Index on page 43 for reference to citations.



COURSE	FULL-TIME (YEARS); INTAKE	COURSE CODES	ATAR/IB; STAT	PREREQUISITE/S	CAREER OPPORTUNITIES
<b>Bachelor of Science - Conservation Biology</b> Available for Experienced-based entry	3*; FEB, JUL	UWA BP004 UWA MJD-CONBI TISC UP004	75/24; WE & V or Q	MM+	Conservation Biologist Conservation Officer Environmental Adviser
<b>Bachelor of Science - Genetics</b> Available for Experienced-based entry	3*; FEB, JUL	UWA BP004 UWA MJD-GENET TISC UP004	75/24; WE & V or Q	MM+ and C2	Genetic Counsellor Geneticist Medical Researcher
<b>Bachelor of Science - Marine Biology</b> Available for Experienced-based entry	3*; FEB, JUL	UWA BP004 UWA MJD-MBIOL TISC UP004	75/24; WE & V or Q	MM+ and C+	Conservation Biologist Environmental Adviser Marine Biologist
<b>Bachelor of Science - Zoology</b> Available for Experienced-based entry	3*; FEB, JUL	UWA BP004 UWA MJD-ZOOLY TISC UP004	75/24; WE & V or Q	MM+	Environmental Adviser Researcher Zoologist
<b>BIOLOGY AND CHEMISTRY - SPECIALISED DEGREES</b>					
<b>Bachelor of Biological Science - Biodiversity and Evolution (Extended Major)</b>	3*; FEB, JUL	UWA BP025 UWA MJD-BIDEM TISC UP025	80/26; N/A	MM+ and C2	Conservation Officer Environmental Adviser Wildlife Manager
<b>Bachelor of Biological Science - Plant Biology (Extended Major)</b>	3*; FEB, JUL	UWA BP025 UWA MJD-PLBEM TISC UP025	80/26; N/A	MM+ and C2	Food Scientist Molecular Biologist Plant Biologist
<b>Bachelor of Biological Science - Wildlife Conservation (Extended Major)</b>	3*; FEB, JUL	UWA BP025 UWA MJD-WLCDM TISC UP025	80/26; N/A	MM+	Conservation Officer Fauna Consultant Wildlife Officer
<b>Bachelor of Earth Sciences - Geochemistry (Extended Major)</b>	3*; FEB, JUL	UWA BP029 UWA MJD-GECDM TISC UP029	80/26; N/A	MM+ and C1	Environmental Chemist Geochemist Geoscientist
<b>Bachelor of Molecular Sciences - Biochemistry of Nutrition (Extended Major)</b>	3*; FEB, JUL	UWA BP028 UWA MJD-BCNDM TISC UP028	80/26; N/A	MM+ and C2	Food Scientist Nutritional Biochemist Synthetic Biologist
<b>Bachelor of Molecular Sciences - Molecular Life Sciences (Extended Major)</b>	3*; FEB, JUL	UWA BP028 UWA MJD-MLSDM TISC UP028	80/26; N/A	MM+ and C2	Biochemist Molecular Biologist Plant Biotechnologist
<b>BIOLOGY AND CHEMISTRY - COMBINED BACHELOR'S AND MASTER'S DEGREES</b>					
<b>Bachelor of Biological Science and Master of Biological Science</b>	4*; FEB	UWA CM005 TISC UM005	90/30; N/A	Refer to relevant major/s	Conservation Biologist Fauna Ecologist Graduate Zoologist
<b>Bachelor of Biological Science and Master of Biotechnology</b>	4*; FEB	UWA CM029 TISC UM029	90/30; N/A	Refer to relevant major/s	Botanist Conservation Biologist Flora/Fauna Consultant
<b>Bachelor of Molecular Sciences and Master of Bioinformatics</b>	4*; FEB	UWA CM024 TISC UM024	90/30; N/A	MM+ and C2	Bioinformatician Data Analyst Data Scientist
<b>Bachelor of Molecular Sciences and Master of Biomedical Science</b>	4*; FEB	UWA CM004 TISC UM004	90/30; N/A	MM+ and C2	Biomedical Scientist Food Scientist Nutritional Biochemist
<b>Bachelor of Molecular Sciences and Master of Biotechnology</b>	4*; FEB	UWA CM007 TISC UM007	90/30; N/A	MM+ and C2	Biotechnologist Microbiologist Molecular Biologist
<b>EARTH AND OCEANS - COMPREHENSIVE DEGREES</b>					
<b>Bachelor of Science - Geographical Sciences</b> Available for Experienced-based entry	3*; FEB, JUL	UWA BP004 UWA MJD-GGRPY TISC UP004	75/24; WE & V or Q	MM	Environmental Adviser Landscape Planner Sustainability Adviser
<b>Bachelor of Science - Geology</b> Available for Experienced-based entry	3*; FEB, JUL	UWA BP004 UWA MJD-GEOGY TISC UP004	75/24; WE & V or Q	MM+	Environmental Adviser Geologist Geophysicist

COURSE	FULL-TIME (YEARS); INTAKE	COURSE CODES	ATAR/IB; STAT	PREREQUISITE/S	CAREER OPPORTUNITIES
<b>Bachelor of Science - Marine and Coastal Processes</b> Available for Experienced-based entry	3*; FEB, JUL	UWA BP004 UWA MJD-MARCP TISC UP004	75/24; WE & V or Q	MM+	Environmental Adviser Environmental Scientist Marine Scientist
<b>Bachelor of Science - Marine Biology</b> Available for Experienced-based entry	3*; FEB, JUL	UWA BP004 UWA MJD-MBIOL TISC UP004	75/24; WE & V or Q	MM+ and C+	Conservation Biologist Environmental Adviser Marine Biologist
<b>EARTH AND OCEANS - SPECIALISED DEGREES</b>					
<b>Bachelor of Earth Sciences - Geochemistry (Extended Major)</b>	3*; FEB, JUL	UWA BP029 UWA MJD-GECDM TISC UP029	80/26; N/A	MM+ and C1	Environmental Chemist Geochemist Geoscientist
<b>Bachelor of Earth Sciences - Integrated Earth and Marine Science (Extended Major)</b>	3*; FEB, JUL	UWA BP029 UWA MJD-IEMDM TISC UP029	80/26; N/A	MM+	Environmental Scientist Geoscientist Marine Geoscientist
<b>Bachelor of Geographical and Spatial Science - Geographical and Spatial Science (Extended Major)</b>	3*; FEB, JUL	UWA BP055 UWA MJD-GSSCI TISC UP055	80/26; N/A	MM+	GIS and Spatial Analyst GIS Officer Spatial Scientist
<b>Bachelor of Marine Science - Marine Science (Extended Major)</b>	3*; FEB, JUL	UWA BP023 UWA MJD-MARDM TISC UP023	80/26; N/A	MM+ and C+	Coastal Planner Marine Biologist Marine Conservationist
<b>EARTH AND OCEANS - COMBINED BACHELOR'S AND MASTER'S DEGREES</b>					
<b>Bachelor of Earth Sciences and Master of Geoscience</b>	4*; FEB	UWA CM009 TISC UM009	90/30; N/A	MM+	Geoscience Consultant Geoscientist Marine Geoscientist
<b>Bachelor of Earth Sciences and Master of Oceanography</b>	4*; FEB	UWA CM012 TISC UM012	90/30; N/A	MM+	Environmental Adviser Marine Geologist Oceanographer
<b>Bachelor of Geographical and Spatial Science and Master of Environmental Science</b>	4*; FEB, JUL	UWA CM032 TISC UM032	90/30; N/A	MM+	GIS and Spatial Analyst GIS Officer Sustainability Adviser
<b>Bachelor of Marine Science and Master of Environmental Science</b>	4*; FEB	UWA CM011 TISC UM011	90/30; N/A	MM+ and C+	Aquaculturist Environmental Adviser Marine Conservationist
<b>Bachelor of Marine Science and Master of Marine Biology</b>	4*; FEB	UWA CM010 TISC UM010	90/30; N/A	MM+ and C+	Conservationist Conservation Officer Marine Biologist
<b>PHYSICS AND MATHEMATICS - COMPREHENSIVE DEGREES</b>					
<b>Bachelor of Science - Mathematics</b> Available for Experienced-based entry	3*; FEB, JUL	UWA BP004 UWA MJD-MATHS TISC UP004	75/24; WE & V or Q	MS+	Analyst Data Scientist Mathematician
<b>Bachelor of Science - Physics</b> Available for Experienced-based entry	3*; FEB, JUL	UWA BP004 UWA MJD-PHYSC TISC UP004	75/24; WE & V or Q	MS+ and P+	Astronomer Geophysicist Physicist
<b>Bachelor of Science - Statistics</b> Available for Experienced-based entry	3*; FEB, JUL	UWA BP004 UWA MJD-STATS TISC UP004	75/24; WE & V or Q	MS+	Analyst Data Scientist Statistician
<b>PHYSICS AND MATHEMATICS - SPECIALISED DEGREE</b>					
<b>Bachelor of Mathematics - Mathematics (Extended Major)</b>	3*; FEB, JUL	UWA BP059 UWA MJD-EMATH TISC UP059	90/30; N/A	MS	Data Scientist Mathematician Statistician
<b>PHYSICS AND MATHEMATICS - COMBINED BACHELOR'S AND MASTER'S DEGREE</b>					
<b>Bachelor of Science - Frontier Physics and Master of Physics</b>	4*; FEB	UWA CM015 TISC UM015	96/36; N/A	MS, MM and P	Astronomer Physicist Research Scientist

## Psychology

Psychology is a fascinating and diverse area of study that explores the human experience and touches upon many aspects of daily life. It seeks to answer questions about how and why we behave the way we do. A degree in psychology will help you develop a scientific understanding of human thoughts and behaviours, the processes underlying these and the relationship of these processes to the brain.



[uwa.edu.au/study/areas/psychology](http://uwa.edu.au/study/areas/psychology)

COURSE	FULL-TIME (YEARS); INTAKE	COURSE CODES	ATAR/IB; STAT	PREREQUISITE/S	CAREER OPPORTUNITIES
<b>COMPREHENSIVE DEGREES</b>					
<b>Bachelor of Arts - Psychological and Behavioural Sciences</b> Available for Experienced-based entry	3*; FEB, JUL	UWA BP001 UWA MJD-PSYCH TISC UP001	75/24; WE & V or Q	None	Counsellor Health and Welfare Adviser Psychologist <sup>2</sup>
<b>Bachelor of Philosophy (Honours)</b>	4*; FEB	UWA BHO05 TISC UH005	98/38; N/A	Refer to relevant major/s	Counsellor Health and Welfare Adviser Psychologist <sup>2</sup>
<b>Bachelor of Science - Psychological and Behavioural Sciences</b> Available for Experienced-based entry	3*; FEB, JUL	UWA BP004 UWA MJD-PSYCH TISC UP004	75/24; WE & V or Q	None	Counsellor Health and Welfare Adviser Psychologist <sup>2</sup>
<b>SPECIALISED DEGREE</b>					
<b>Bachelor of Psychology - Psychology (Extended Major)</b>	3*; FEB, JUL	UWA BP030 UWA MJD-PSYDM TISC UP030	80/26; N/A	None	Clinical Neuropsychologist <sup>2</sup> Clinical Psychologist <sup>2</sup> Organisational Psychologist <sup>2</sup>
<b>COMBINED BACHELOR'S DEGREES</b>					
<b>Bachelor of Psychology and Bachelor of Arts</b>	4*; FEB, JUL	UWA CB011 TISC UB011	85/28; N/A	Refer to relevant major/s	Human Resource Professional Psychologist <sup>2</sup> Social Worker <sup>1</sup>
<b>Bachelor of Psychology and Bachelor of Commerce</b>	4*; FEB, JUL	UWA CB013 TISC UB013	88/30; N/A	Refer to relevant major/s	Industrial Relations Manager Psychologist <sup>2</sup> Public Relations Officer

Refer to the Course Key Index on page 43 for reference to citations.

## Discover new interests and connect with your peers

The UWA Student Guild has over 160 affiliated clubs and societies catering to a wide variety of interests – from anime to zoology, science fiction to cheerleading. Collectively, hundreds of events are run each year and there are plenty of opportunities to get involved, make friends and explore new interests.

Visit [uwastudentguild.com/clubs](http://uwastudentguild.com/clubs)







# Entry pathways

Depending on your background we offer a wide range of entry pathways to join UWA – WA's top ranked university (QS 2023).

## Aboriginal Orientation Course

If you don't meet the entry requirements or just want to better prepare for uni study, this free 14 week course gives you entry to most bachelor's degrees and the study skills to succeed.

## AccessUWA

With AccessUWA you can study individual units of your choice at UWA without having to enrol in a bachelor's degree. Upon successful completion of a minimum number of four units (24 credit points), you can apply for a comprehensive bachelor's degree based on your AccessUWA results.

## Australian Tertiary Admissions Rank (ATAR)

ATAR tells you your position relative to other students in your year. It's important to remember that it's a score not a percentage. It is also the most direct way as a school leaver to get into the bachelor's degree of your choice.

## Broadway UWA

If you've completed your entire Year 12 studies at a Broadway UWA school, you'll receive an automated ATAR adjustment.

## Diploma Entry Pathway

Applicants with a completed AQF Level 5 qualification (Diploma) or above may be able to use this for admission to undergraduate programs at UWA.

## Educational Access Scheme (EAS)

The Educational Access Scheme (EAS) can help you gain access to uni if you've experienced exceptional circumstances during senior secondary schooling.

### Experience-based entry

UWA's new Experience-based entry allows you to apply for a select number of comprehensive bachelor's degrees using a combination of academic and life experiences. This is the ideal pathway if your ATAR doesn't reflect your true capability, if you have completed TAFE or VET or even if you're not doing ATAR.

## Fairway UWA

If you're challenged by location, economic or other factors, complete the Fairway support program in Year 12 to gain entry to our bachelor's degrees with an ATAR of 70 or above.

## First in Family

If your parents or guardians have not completed a university-level degree, you may be eligible for a place at UWA through the First in Family program.

## Higher Education Study

If you have previously studied at a bachelor's degree level and have successfully completed one full-time (or equivalent) semester, you can apply for entry to UWA.

## Indigenous Provisional Entry Scheme

If you're an Indigenous student and don't meet the required ATAR, or are mature-age and have a strong educational or employment background, you may be eligible for entry through this pathway.

## International Baccalaureate (IB)

UWA welcomes IB students to apply and your IB score will be converted into an equivalent ATAR.

## Special Tertiary Admissions Test (STAT)

The STAT is a national test that provides a pathway to tertiary study if you don't meet the formal entry requirements. You can use your results in the STAT to gain entry to select number of bachelor's degrees.

## University Enabling Programs

If you have completed a recognised Australian University Enabling Course with an average grade of 65 (60 for Broadway schools) you can use this to apply for a comprehensive degree at UWA.

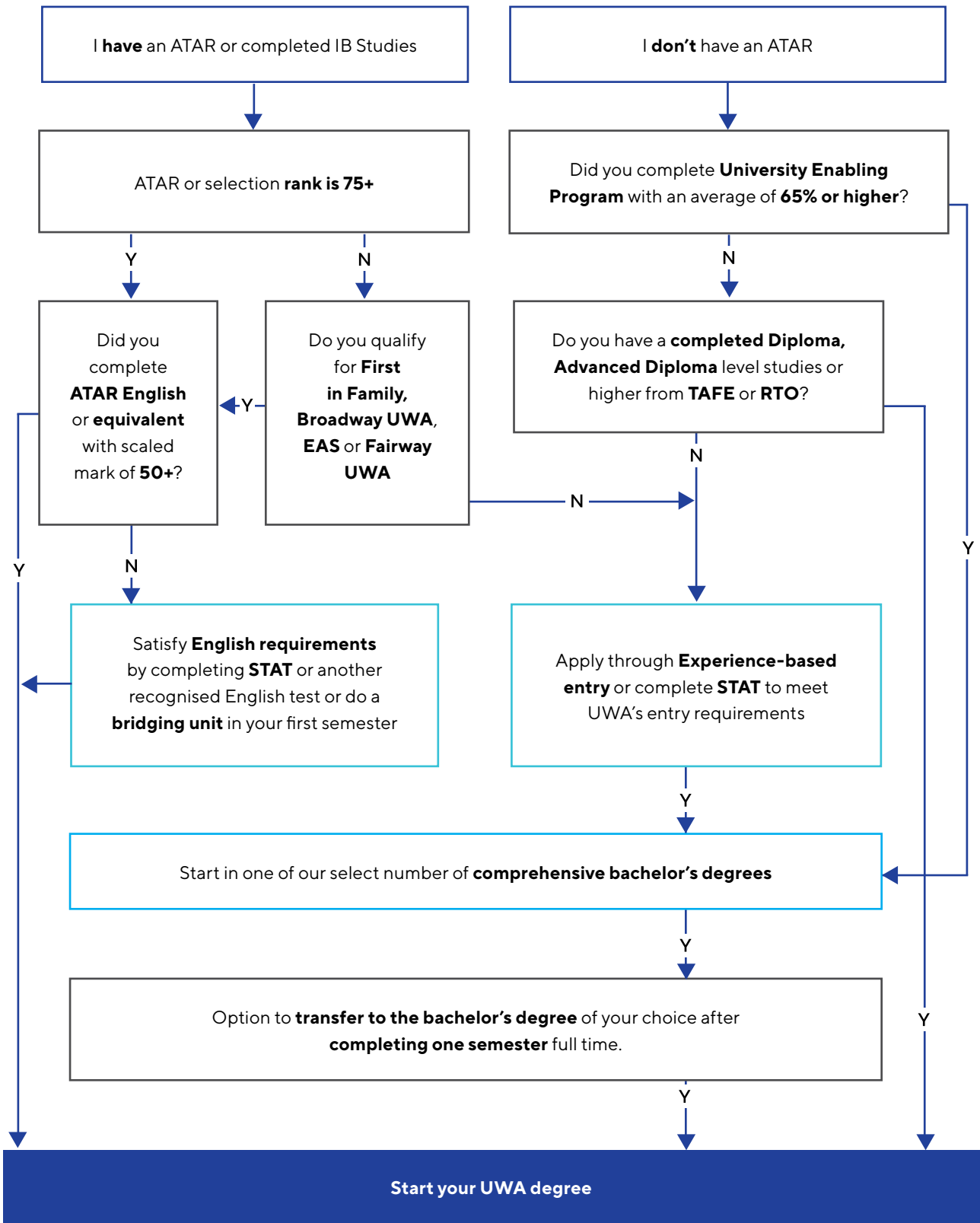
## UWA Early Offers

Ready to begin your career journey at UWA? If you are currently in Year 12, our Early Offers pathway means you can tick your application off your list early.

## UWA Smart Start

Boost your confidence and equip yourself with the skills to succeed in your university degree course by enrolling in our unique university preparation course in Albany.

For more information on entry pathways visit [uwa.edu.au/study/admission-entry-pathways](http://uwa.edu.au/study/admission-entry-pathways)



**We're here to help you achieve your potential and find your pathway to UWA.**

No matter how long ago you completed Year 12, or if you're not sure which entry pathway is right for you give us a call on **131 UWA (892)**, visit us on campus or go to [ask.uwa.edu.au](http://ask.uwa.edu.au)

This diagram is for illustration purposes, please check the entry requirements for your chosen course.



# Join us at Bilya Marlee

Bilya Marlee is a place where you'll be able to strengthen your sense of Aboriginal identity and be part of a strong, supportive and fun community.

Throughout your studies at UWA you'll have tutoring support, career advice, academic, wellbeing and pastoral guidance. You'll also enjoy social, cultural and community activities as part of the Bilya Marlee community of Indigenous students, staff and graduates across every discipline.

At UWA, we care about where you're going in life and are here to be a part of your journey. Regardless of whether your path so far includes ATAR or whether you meet the typical entry requirements of a particular course, we'll work with you to achieve your study and career goals. You can always talk to us about your circumstances and goals so we can find a way for you to join us here at UWA.

## Financial support and scholarships

We're here to make sure financial constraints don't stand in the way of you joining us at UWA. If the cost of study has you worried, we can help by giving you info about the financial support you could be entitled to. ABSTUDY can help Aboriginal and Torres Strait Islanders cover the costs of university. Plus, there are plenty of scholarships just for Indigenous students.

## Indigenous study support

We want you to continue the story of Indigenous achievement at UWA so we're here with you every step of the way. As an Indigenous student at UWA, you can be matched with a final-year student, postgraduate student or graduate to help tutor you throughout your chosen degree. Plus, our Bilya Marlee team are always here to help with any academic or other support you might need throughout your studies.

## Get involved

The WA Students Aboriginal Corporation (WASAC) is the Indigenous student body on campus and offers a range of social and sporting events throughout the year.

## Get in touch with us

Our School of Indigenous Studies team is available to answer all your questions. Call **08 6488 3847** or email [sis@uwa.edu.au](mailto:sis@uwa.edu.au)

[uwa.edu.au/study/indigenous-study](http://uwa.edu.au/study/indigenous-study)



# How to apply

## Choose your degree

Choosing what to study is a personal choice and we'd encourage you to select what interests you. You can find out more about our courses at [uwa.edu.au/study](https://uwa.edu.au/study)

## Check entry requirements

Entry to most courses is assessed on your ATAR or equivalent, as well as English language requirements. For some courses there are additional entry requirements and/or prerequisites. For more information visit [uwa.edu.au/study](https://uwa.edu.au/study)

## Choose your entry pathway

There are many ways to join UWA – choose the UWA entry pathway that suits you best.

## Apply online

Once you've selected your pathway, you can apply online. If you are currently in Year 12, our applications for 2024 entry are open through TISC Online. Application open and close dates apply to some courses. Find out more at [uwa.edu.au/how-to-apply](https://uwa.edu.au/how-to-apply)

## Accept your offer

You'll receive the outcome of your application via email. If your application is successful, details on how to accept your offer will be provided in your offer email. You can also find out more at [uwa.edu.au/unistart](https://uwa.edu.au/unistart)

## Accommodation

During your application process, explore your options for quality accommodation close to the UWA campus at [uwa.edu.au/accommodation](https://uwa.edu.au/accommodation)

## We're here to help

If you'd like advice on what course to choose, or help with your application, contact our Future Students Centre. Call us on **131 UWA (131 892)**, or visit [ask.uwa.edu.au](https://ask.uwa.edu.au)

## Early Offers

If you're currently in Year 12, you can apply now for a UWA Early Offer. For information on applying for an Early Offer visit [uwa.edu.au/early-offers](https://uwa.edu.au/early-offers)

## Parents and Guardians

If your child is in Year 10 or above, they're probably already thinking about their options after high school. The choice of whether to continue their education will be one of the most important of their life, and as a parent or guardian, you play a vital role in helping your child to understand their options.

Check out our resources for parents and guardians at [uwa.edu.au/study/for-parents](https://uwa.edu.au/study/for-parents)



# Fees

If you're an Australian or New Zealand citizen or holder of an Australian permanent resident visa or humanitarian visa, you'll enrol in a Commonwealth Supported Place (CSP) in your undergraduate course at UWA.

## How much do you pay?

As a Commonwealth Supported student you'll pay a student contribution amount towards the cost of your course. The amount that you pay is determined by the Australian Government, based on the number of units you enrol in and the discipline of the units.

A standard full-time enrolment is normally four units per semester (eight units per year). A standard unit is worth six credit points.

For an estimate of your fees, visit [fees.uwa.edu.au/calculator](http://fees.uwa.edu.au/calculator)

## How do you pay?

You can pay your student contribution amount upfront or defer all or part via the HECS-HELP loan scheme, if you are an Australian citizen, humanitarian visa holder or New Zealand Special Category Visa (NZ SCV) holder who meets the long-term residency requirements. HECS-HELP, an Australian Government Higher Education Loan Program (HELP), allows you to defer all or part of your student contribution until you commence employment and are earning over a certain amount.

If you are not eligible for HECS-HELP, your student contribution must be paid in full to the University.

Further information on HECS-HELP, including eligibility criteria and loan limits, is available at [studyassist.gov.au](http://studyassist.gov.au)

## Student Services and Amenities Fee

The Student Services and Amenities Fee (SSAF) is a compulsory fee that directly benefits all UWA students. The fee is used to provide a range of recreational, sporting, social and educational facilities and services, including student representation. For more information, visit [uwa.edu.au/students/ssaf](http://uwa.edu.au/students/ssaf)

## Other costs

For further information and advice on the other costs associated with your study, visit [uwa.edu.au/study/student-life/cost-of-living](http://uwa.edu.au/study/student-life/cost-of-living)



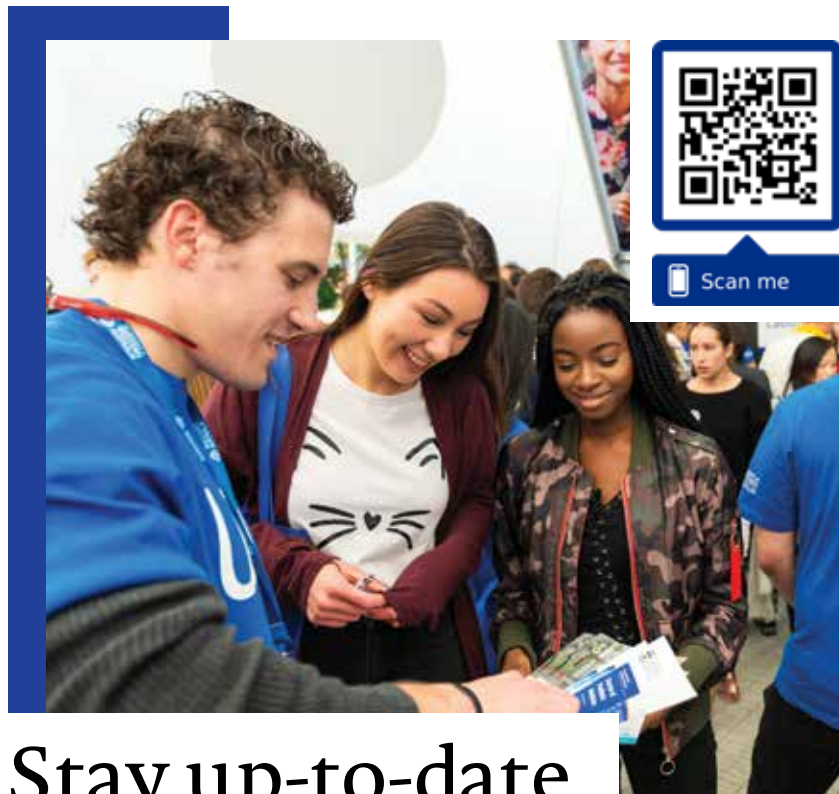
# Course Key Index

## PREREQUISITE/S

<b>C</b>	Chemistry ATAR
<b>C+</b>	Chemistry ATAR OR a bridging unit.
<b>C1</b>	Chemistry ATAR OR a bridging unit. Mid-year applicants must have Chemistry ATAR to complete their degree in three years.
<b>C2</b>	Chemistry ATAR OR a bridging unit. Mid-year applicants must have Chemistry ATAR AND Biology OR Human Biology ATAR to complete their degree in three years.
<b>E</b>	Mathematics Methods ATAR AND Mathematics Specialist ATAR OR Chemistry ATAR OR Physics ATAR.
<b>EDU</b>	Mathematics Methods ATAR AND personal statement AND prerequisite subjects from your chosen major/s.
<b>HB/B+</b>	Human Biology ATAR OR Biology ATAR OR a bridging unit.
<b>MA+</b>	Mathematics Applications ATAR OR higher-level mathematics OR a bridging unit.
<b>MM</b>	Mathematics Methods ATAR
<b>MM+</b>	Mathematics Methods ATAR OR Mathematics Applications ATAR AND a bridging unit. Students without ATAR Mathematics will take two bridging units.
<b>MS</b>	Mathematics Specialist ATAR
<b>MS+</b>	Mathematics Specialist ATAR OR Mathematics Methods ATAR AND a bridging unit.
<b>MUS</b>	A basic background of music experience is required for applicants, demonstrated by an audition or interview.
<b>MUS1</b>	A practical requirement equivalent to AMEB Grade 5, demonstrated by an audition; a portfolio is also required for applicants for composition.
<b>MUS2</b>	A practical requirement equivalent to AMEB Grade 5, demonstrated by an audition (no audition is required if taken as a second major), and a background in music theory; a portfolio is also required for applicants for composition.
<b>MUS3</b>	Performance/Musicology/Studio Teaching Streams: A practical requirement equivalent to AMEB Grade 7, demonstrated by an audition, and a strong background in music theory.  Composition Stream: A practical requirement equivalent to AMEB Grade 5, demonstrated by an audition, and a strong background in music theory; a portfolio is also required.  Creative Music Technology Stream: A practical requirement equivalent to AMEB Grade 4, demonstrated by an audition, and a background in music theory; a portfolio is also required.
<b>P</b>	Physics ATAR
<b>P+</b>	Physics ATAR OR a bridging unit.
<b>S</b>	Personal Statement

## COURSE SUMMARY

<b>WE &amp; V or Q</b>	Written English and Verbal or Quantitative
<b>^</b>	Duration may vary depending on your chosen bachelor's degree. The Assured Pathway to the Juris Doctor via Bachelor of Philosophy (Honours) is four years' full time or part-time equivalent with a minimum ATAR/IB of 98.00/38 or equivalent.
<b>*</b>	This course is available part-time.
<b>**</b>	A major in Chemical Engineering will take 5.5 years to complete. This course is available part-time.
<b>1</b>	Postgraduate study required.
<b>2</b>	Postgraduate study and/or training is required to register as a Psychologist in Australia.
<b>3</b>	Only available to applicants with an Assured Pathway to Dentistry. Competitive entry applies.
<b>4</b>	Only available to applicants with an Assured Pathway to Medicine. Competitive entry applies.
<b>5</b>	Only available to students with an Assured Pathway place in Podiatric Medicine. Competitive entry applies.
<b>6</b>	Graduates will be able to register with the Dental Board of Australia as a Dentist and enter the profession immediately.
<b>7</b>	Graduates will be eligible for registration as general Podiatrists in Australia, New Zealand, UK, Hong Kong, Singapore and parts of Canada without the need for any further preregistration training or compulsory internship.
<b>8</b>	Requires further study. This can be undertaken with a professional college for specialisation in a medical discipline after graduating from the Doctor of Medicine.



# Stay up-to-date with UWA

Get the lowdown on UWA events, our courses, student opportunities, study tips and everything you need to know about applying.



THE UNIVERSITY OF  
**WESTERN  
AUSTRALIA**

## Get in touch

**CALL US**  
131 UWA (131 892)

**CHAT ONLINE**  
[uwa.edu.au/study](https://uwa.edu.au/study)  
Mon–Fri 2–4pm (AWST)

**ASK US A QUESTION**  
[ask.uwa.edu.au](https://ask.uwa.edu.au)

**VIRTUAL CONSULT**  
[seek.uwa.edu.au/appointments](https://seek.uwa.edu.au/appointments)

**VISIT US**  
Student Central,  
The University of Western Australia  
35 Stirling Hwy, Perth

## Stay connected

